



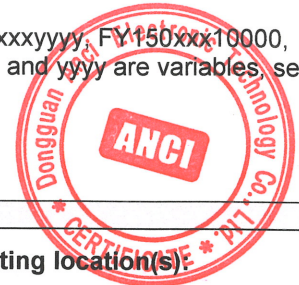
中国认可
国际互认
检测
TESTING
CNAS L6214



TEST REPORT EN 60335-2-29 Safety of household and similar electrical appliances Part 2-29: Particular requirements for battery chargers	
Report Number	SA21040356L01041
Date of issue	2021-09-01
Total number of pages	118
Name of Testing Laboratory	DongGuan Anci Electronic Technology Co., Ltd.
Address	1-2 Floor, Building A, No.11, Headquarters 2 Road, Songshan Lake Hi-tech Industrial Development Zone, Dongguan City, Guangdong, China.
Applicant's name	Shenzhen Fuyuan Power Co., Ltd.
Address	8F, A9 Building, Tianrui Industrial Park, Fuyong Town, Baoan District, Shenzhen, Guangdong, 518103 P. R. China
Test specification:	
Standard	EN 60335-2-29:2004+A11:2018 for use in conjunction with EN 60335-1:2012+A2:2019; EN 62233:2008
Test procedure	Type test
Non-standard test method	N/A
Test Report Form No.	IEC60335_2_29M
Test Report Form(s) Originator	SIQ
Master TRF	Dated 2020-03-12
Copyright © 2020 IEC System of Conformity Assessment Schemes for Electrotechnical Equipment and Components (IECEE System). All rights reserved. This publication may be reproduced in whole or in part for non-commercial purposes as long as the IECEE is acknowledged as copyright owner and source of the material. IECEE takes no responsibility for and will not assume liability for damages resulting from the reader's interpretation of the reproduced material due to its placement and context.	



Test item description	SWITCHING POWER SUPPLY
Trade Mark(s)	N/A
Manufacturer	Same as applicant
Model/Type reference	FY150xxxxxxx, FY135xxxxxxx, FY120xxxxxxx, FY150xxx10000, FY135xxx10000, FY120xxx10000 (xxx and yyy are variables, see model list for details)
Ratings	Input: 100-240V~ 50/60Hz, 2.5A Output: see models list on page 6



Responsible Testing Laboratory (as applicable), testing procedure and testing location(s):

<input checked="" type="checkbox"/>	Testing Laboratory:	DongGuan Anci Electronic Technology Co., Ltd.	
	Testing location/ address	1-2 Floor, Building A, No.11, Headquarters 2 Road, Songshan Lake Hi-tech Industrial Development Zone, Dongguan City, Guangdong, China.	
	Approved by (name+ signature)	KD Mo	<i>KD Mo</i>
	Supervised by (name + signature)	Bruce Yu	<i>Bruce Yu</i>
<input type="checkbox"/>	Testing procedure: CTF Stage 1:		
	Testing location/ address		
	Tested by (name, function, signature)		
	Approved by (name, function, signature) .. :		
<input type="checkbox"/>	Testing procedure: CTF Stage 2:		
	Testing location/ address		
	Tested by (name + signature)		
	Witnessed by (name, function, signature) . :		
	Approved by (name, function, signature) .. :		
<input type="checkbox"/>	Testing procedure: CTF Stage 3:		
<input type="checkbox"/>	Testing procedure: CTF Stage 4:		
	Testing location/ address		
	Tested by (name, function, signature)		
	Witnessed by (name, function, signature) . :		
	Approved by (name, function, signature) .. :		
	Supervised by (name, function, signature) :		

List of Attachments (including a total number of pages in each attachment): Attachment No. 1: 5 Pages of Photo documentation.	
Summary of testing: If not otherwise specified, tests were performed on model FY15012010000, FY1501509000, FY1506722000.	
Tests performed (name of test and test clause): The submitted samples were tested and found to comply with the requirements of: ➤ Electrical safety - EN 60335-2-29:2004+A11:2018; - EN 60335-1:2012+A2:2019; - EN 62233:2008; - Before placing the products in the different countries, the manufacturer must ensure that: Operating Instructions, Ratings Labels and Warnings Labels are in an Accepted or Official Language of the country in question; The equipment complies with the National Standards and/or Electrical Codes of the country, province or city or in question.	Testing location: DongGuan Anci Electronic Technology Co., Ltd. 1-2 Floor, Building A, No.11, Headquarters 2 Road, Songshan Lake Hi-tech Industrial Development Zone, Dongguan City, Guangdong, China.
Summary of compliance with National Differences (List of countries addressed): List of countries addressed: <input checked="" type="checkbox"/> The product fulfils the requirements of EN 60335-2-29:2004+A11:2018; EN 60335-1:2012+A2:2019.	

Statement concerning the uncertainty of the measurement systems used for the tests

(may be required by the product standard or client)







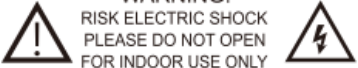
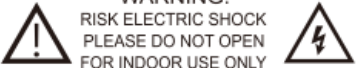
Internal procedure used for type testing through which traceability of the measuring uncertainty has been established:

Procedure number, issue date and title:

Statement not required by the standard used for type testing

Copy of marking plate:

The artwork below may be only a draft.

<p>SWITCHING POWER SUPPLY (battery charger)</p>	<p>SWITCHING POWER SUPPLY (battery charger)</p>
<p>MODEL:FY15012010000 INPUT:100-240V~ 50/60Hz 2.5A OUTPUT: 12.0V=10.0A IP20 Ta=40 °C</p>	<p>MODEL:FY1506722000 INPUT:100-240V~ 50/60Hz 2.5A OUTPUT: 67.2V=2.0A IP20 Ta=40 °C</p>
 <ul style="list-style-type: none"> ● RED LIGHT MEANS CHARGING ● GREEN LIGHT MEANS CHARGE FULL OR DISCONNECT 	 <ul style="list-style-type: none"> ● RED LIGHT MEANS CHARGING ● GREEN LIGHT MEANS CHARGE FULL OR DISCONNECT
	
	
<p>WARNING: RISK ELECTRIC SHOCK PLEASE DO NOT OPEN FOR INDOOR USE ONLY</p> 	<p>WARNING: RISK ELECTRIC SHOCK PLEASE DO NOT OPEN FOR INDOOR USE ONLY</p> 
<p>Manufactured By:Shenzhen Fuyuanlian Power Co.,Ltd Made in China</p>	<p>Manufactured By:Shenzhen Fuyuanlian Power Co.,Ltd Made in China</p>

Remark:

Representative marking for above models, marking plates of others model are identical except for the model designation and output rating.

Test item particulars		SWITCHING POWER SUPPLY (battery charger)			
Classification of installation and use		Class II			
Supply Connection		Appliance inlet			
.....					
Possible test case verdicts:					
- test case does not apply to the test object		N/A			
- test object does meet the requirement		P (Pass)			
- test object does not meet the requirement		F (Fail)			
Testing					
Date of receipt of test item		2021-07-20			
Date (s) of performance of tests		2021-07-20 to 2021-08-22			
General remarks:					
"(See Enclosure #)" refers to additional information appended to the report. "(See appended table)" refers to a table appended to the report.					
Throughout this report a <input type="checkbox"/> comma / <input checked="" type="checkbox"/> point is used as the decimal separator.					
Manufacturer's Declaration per sub-clause 4.2.5 of IEC60335-1:					
The application for obtaining a Test Certificate includes more than one factory location and a declaration from the Manufacturer stating that the sample(s) submitted for evaluation is (are) representative of the products from each factory has been provided..... :				<input type="checkbox"/> Yes <input checked="" type="checkbox"/> Not applicable	
Name and address of factory (ies)		Same as applicant			
General product information and other remarks:					
<u>Product description:</u>					
1. The SWITCHING POWER SUPPLY(battery charger) is class II appliance, for indoor use only and the specified maximum ambient is 40°C.					
2. The SWITCHING POWER SUPPLY(battery charger) top enclosure is secured to bottom enclosure by ultrasonic welding.					
3. The SWITCHING POWER SUPPLY(battery charger) output connector is connect the hazards voltage, only the skilled person assemble only.					
4. models list:					
Table A :		Definition of Variables			
xxx	120-672	3 digits code indicate output voltage range from 12.0-67.2Vdc, minimum step by 0.1V. eg: 120 means 12.0Vdc, 672 means 67.2Vdc			
yyyy	0010-9900	3 digits code indicate output current from 0.1-9.9A, minimum step by 0.01A. eg: 0010 means 0.1A, 9900 means 9.9A			
Table B: model list					
Model	Rated Input	Output Voltage (Vdc)	Output Current (A)	Max. Output Power (W)	Transformer (T1)
FY150xxxxyyy, FY135xxxxyyy, FY120xxxxyyy	100-240V~ 50/60Hz 2.5A	12.0	0.1-9.9	118.8	FYD- POT4020RZ

		12.1-67.2	0.1-9.0	135.0	
FY150xxx10000, FY135xxx10000, FY120xxx10000		12.0	10.0	120.0	

5	GENERAL CONDITIONS FOR THE TESTS		P
	Tests performed according to clause 5, e.g. nature of supply, sequence of testing, etc.		P
5.2	If the test of 21.101 is carried out two additional battery chargers required (IEC 60335-2-29)		P
5.101	Battery chargers tested as motor-operated appliances (IEC 60335-2-29)		P
6	CLASSIFICATION		P
6.1	Protection against electric shock: Class 0, 0I, I, II, III	Class II	P
	For a class III construction with a detachable power supply part the appliance is classified according to the detachable power supply part		N/A
6.2	Protection against harmful ingress of water	IP20	N/A
	Battery chargers for outdoor use at least IPX4 (IEC 60335-2-29)		N/A
7	MARKING AND INSTRUCTIONS		P
7.1	Rated voltage or voltage range (V)	100-240V	P
	Symbol for nature of supply, or	~	P
	Rated frequency (Hz)	50/60Hz	P
	Rated power input (W), or		N/A
	Rated current (A)	2.5A	P
	Manufacturer's or responsible vendor's name, trademark or identification mark	See marking plate	P
	Model or type reference	See marking plate	P
	Symbol IEC 60417-5172, for class II appliances	Double square symbol used	P
	IP number, other than IPX0	IP20	N/A
	Symbol IEC 60417-5180, for class III appliances, unless		N/A
	the appliance is operated by batteries only, or		N/A
	for appliances powered by rechargeable batteries recharged in the appliance		N/A
	Symbol IEC 60417-5018, for class II and class III appliances incorporating a functional earth		N/A

IEC 60335-2-29			
Clause	Requirement + Test	Result - Remark	Verdict
	Symbol IEC 60417-5036, for the enclosure of electrically-operated water valves in external hose-sets for connection of an appliance to the water mains, if the working voltage exceeds extra-low voltage		N/A
	Battery chargers marked with (IEC 60335-2-29):		—
	- rated d.c. output voltage (V)		P
	- rated d.c. output current (A)		P
	No other output current shall be marked		N/A
	- rated current (A) of protective devices incorporated in a d.c. distribution board		N/A
	- the polarity of the output terminals unless incorrect polarity connection is prevented		P
	- The positive terminal indicated by symbol IEC 60417-5005 (2002-10) and the negative terminal by symbol IEC 60417-5006 (2002-10)	Marked on the label	P
	- time-current characteristic of fuse-links of the time-lag type	Marked on the label	P
	If the output exceeds 20 VA, battery chargers marked with (IEC 60335-2-29):		—
	- “Before charging, read the instructions” or symbol ISO 7000-0790 (2004-01) (IEC 60335-2-29:2016/AMD1:2019)		P
	“For indoor use” or symbol IEC 60417-5957 (2004-12) or “Do not expose to rain” or symbol IEC 60417-6062 (2011-05) (IEC 60335-2-29:2016/AMD1:2019)		P
	Not required if the battery charger output is less than 20 VA or the battery charger has a degree of protection against harmful ingress of water of at least IPX4 (IEC 60335-2-29:2016/AMD1:2019)		N/A
	If the output exceeds 20 VA and the battery charger is for lead-acid batteries, battery chargers marked with (IEC 60335-2-29):		—
	- disconnect the supply before making or breaking the connections to the battery		N/A
	- WARNING: Explosive gases. Prevent flames and sparks. Provide adequate ventilation during charging.		N/A
	Battery chargers incorporating an engine cranking switch allowing the charger to supply a supplementary starting current for the engine marked with (IEC 60335-2-29):		—
	- maximum “on” time		N/A
	- minimum “off” time or maximum ratio between “on” time and “off” time		N/A
7.2	Warning for stationary appliances for multiple supply		N/A

IEC 60335-2-29			
Clause	Requirement + Test	Result - Remark	Verdict
	Warning placed in vicinity of terminal cover		N/A
7.3	Range of rated values marked with the lower and upper limits separated by a hyphen	100-240VAC	P
	Different rated values marked with the values separated by an oblique stroke	50/60Hz	P
7.4	Appliances adjustable for different rated voltages or rated frequencies, the voltage or the frequency setting is clearly discernible	No input setting device	N/A
	Requirement met if frequent changes are not required and the rated voltage or rated frequency to which the appliance is to be adjusted is determined from a wiring diagram		N/A
	If the battery charger can be adjusted to different rated DC output voltages, the output voltage to which the battery charger is adjusted clearly discernible (IEC 60335-2-29)		N/A
7.5	Appliances with more than one rated voltage or one or more rated voltage ranges, marked with rated input or rated current for each rated voltage or range, unless		P
	the power input or current are related to the arithmetic mean value of the rated voltage range		N/A
	Relation between marking for upper and lower limits of rated power input or rated current and voltage is clear		P
7.6	Correct symbols used		P
	Symbol for nature of supply placed next to rated voltage		P
	Symbol for class II appliances placed unlikely to be confused with other marking		P
	Units of physical quantities and their symbols according to international standardized system		P
	The positive polarity terminal (plus) indicated by symbol IEC 60417-5005 (2002-10) and the negative polarity terminal (minus) by symbol IEC 60417-5006 (2002-10) (IEC 60335-2-29)		P
	for indoor use only indicated by symbol IEC 60417-5957 (2004-12) (IEC 60335-2-29:2016/AMD1:2019)		P
	do not expose to moisture indicated by symbol IEC 60417-6062 (2011-05) (IEC 60335-2-29:2016/AMD1:2019)		N/A
7.7	Connection diagram fixed to appliances to be connected to more than two supply conductors and appliances for multiple supply, unless	Single supply voltage range	N/A

IEC 60335-2-29			
Clause	Requirement + Test	Result - Remark	Verdict
	correct mode of connection is obvious		N/A
7.8	Except for type Z attachment, terminals for connection to the supply mains indicated as follows:		N/A
	- marking of terminals exclusively for the neutral conductor (letter N)		N/A
	- marking of protective earthing terminals (symbol IEC 60417-5019)		N/A
	- marking of functional earthing terminals (symbol IEC 60417-5018)		N/A
	- marking not placed on removable parts		N/A
7.9	Marking or placing of switches which may cause a hazard		N/A
7.10	Indications of switches on stationary appliances and controls on all appliances by use of figures, letters or other visual means.....:		N/A
	This applies also to switches which are part of a control		N/A
	If figures are used, the off position indicated by the figure 0		N/A
	The figure 0 indicates only OFF position, unless no confusion with the OFF position		N/A
7.11	Indication for direction of adjustment of controls		N/A
7.12	Instructions for safe use provided	Refer to user manual	P
	Details concerning precautions during user maintenance		P
	The instructions state that:		P
	- the appliance is not to be used by persons (including children) with reduced physical, sensory or mental capabilities, or lack of experience and knowledge, unless they have been given supervision or instruction	Refer to user manual	P
	- children being supervised not to play with the appliance		P
	For a part of class III construction supplied from a detachable power supply unit, the instructions state that the appliance is only to be used with the unit provided		N/A
	Instructions for class III appliances state that it must only be supplied at SELV, unless		N/A
	it is a battery-operated appliance, the battery being charged outside the appliance		N/A
	For appliances for altitudes exceeding 2000 m, the maximum altitude is stated		N/A

IEC 60335-2-29			
Clause	Requirement + Test	Result - Remark	Verdict
	The instructions for appliances incorporating a functional earth states that the appliance incorporates an earth connection for functional purposes only		N/A
	The instructions shall (IEC 60335-2-29:2016/AMD1:2019):		—
	- state that during charging, the battery must be placed in a well-ventilated area (for chargers for batteries that release gases into the atmosphere during normal charging)		N/A
	- state that the battery charger must only be plugged into an earthed socket-outlet (for portable class I battery chargers for outdoor use)		N/A
	- explain the automatic function, stating any limitation (for automatic battery chargers)		N/A
	The instructions for type 1 battery chargers shall also:		—
	- specify the types, the number of batteries and the rated capacity of the batteries that can be charged		P
	- include a warning against recharging non-rechargeable batteries.		P
	The instructions for type 2 battery chargers shall also:		—
	- specify the batteries intended to be charged, such as by a catalogue number, series identification or the equivalent		N/A
	- specify the ambient temperature range for the charger during charging		N/A
	If symbol IEC 60417-5957 (2004-12) or symbol IEC 60417-6062 (2011-05) is used, its meaning shall be explained.		P
	Battery chargers for charging automobile batteries include substance concerning (IEC 60335-2-29):		—
	- the battery terminal not connected to the chassis has to be connected first. The other connection is to be made to the chassis, remote from the battery and fuel line. The battery charger is then to be connected to the supply mains		N/A
	- after charging, disconnect the battery charger from the supply mains. Then remove the chassis connection and then the battery connection		N/A
7.12.1	Sufficient details for installation supplied		N/A
	For an appliance intended to be permanently connected to the water mains and not connected by a hose-set, this is stated		N/A
	If different rated voltages or different rated frequencies are marked, the instructions state what action to be taken to adjust the appliance		N/A

IEC 60335-2-29			
Clause	Requirement + Test	Result - Remark	Verdict
	The instructions for battery chargers for installation in caravans and similar vehicles shall state that the connection to the supply mains is to be in accordance with the national wiring rules		N/A
7.12.2	Stationary appliances not fitted with means for disconnection from the supply mains having a contact separation in all poles that provide full disconnection under overvoltage category III, the instructions state that means for disconnection must be incorporated in the fixed wiring in accordance with the wiring rules		N/A
7.12.3	Insulation of the fixed wiring in contact with parts exceeding 50 K during clause 11; instructions state that the fixed wiring must be protected		N/A
7.12.4	Instructions for built-in appliances:		N/A
	- dimensions of space		N/A
	- dimensions and position of supporting and fixing		N/A
	- minimum distances between parts and surrounding structure		N/A
	- minimum dimensions of ventilating openings and arrangement		N/A
	- connection to supply mains and interconnection of separate components		N/A
	- allow disconnection of the appliance after installation, by accessible plug or a switch in the fixed wiring, unless		N/A
	a switch complying with 24.3		N/A
7.12.5	Replacement cord instructions, type X attachment with a specially prepared cord		N/A
	Replacement cord instructions, type Y attachment		N/A
	Replacement cord instructions, type Z attachment		N/A
7.12.6	Caution in the instructions for appliances incorporating a non-self-resetting thermal cut-out that is reset by disconnection of the supply mains, if this cut-out is required to comply with the standard		N/A
7.12.7	Instructions for fixed appliances stating how the appliance is to be fixed		N/A
7.12.8	Instructions for appliances connected to the water mains:		N/A
	- max. inlet water pressure (Pa).....:		N/A
	- min. inlet water pressure, if necessary (Pa)		N/A
	Instructions concerning new and old hose-sets for appliances connected to the water mains by detachable hose-sets		N/A

IEC 60335-2-29			
Clause	Requirement + Test	Result - Remark	Verdict
7.12.9	Instructions specified in 7.12 and from 7.12.1 to 7.12.8 appear together before any other instructions supplied with the appliance		P
	These instructions may be supplied with the appliance separately from any functional use booklet		N/A
	They may follow the description of the appliance that identifies parts, or follow the drawings/sketches		N/A
	In addition, instructions are also available in an alternative format such as on a website or on request from the user in a format such as a DVD		P
	In addition, instructions are also available in an alternative format such as on a website or in a format such as a DVD	Website	P
7.13	Instructions and other texts in an official language	English, other should be evaluated during national approval	P
7.14	Markings clearly legible and durable:		P
	Signal words WARNING, CAUTION, DANGER in uppercase having a height as specified	On body	P
	Uppercase letter of the text explaining the signal word not smaller than 1,6 mm		P
	Moulded in, engraved, or stamped markings either raised above or have a depth below the surface of at least 0,25 mm, unless		N/A
	contrasting colours are used		N/A
	Markings checked by inspection, measurement and rubbing test as specified		P
7.15	Markings on a main part	On body	P
	Marking clearly discernible from the outside, if necessary after removal of a cover		P
	For portable appliances, cover can be removed or opened without a tool		N/A
	For stationary appliances, name, trademark or identification mark and model or type reference visible after installation		N/A
	For fixed appliances, name, trademark or identification mark and model or type reference visible after installation according to the instructions		N/A
	Indications for switches and controls placed on or near the components. Marking not on parts which can be positioned or repositioned in such a way that the marking is misleading		N/A
	The symbol IEC 60417-5018 placed next to the symbol IEC 60417-5172 or IEC 60417-5180		N/A

IEC 60335-2-29			
Clause	Requirement + Test	Result - Remark	Verdict
7.16	Marking of a possible replaceable thermal link or fuse link clearly visible with regard to replacing the link		N/A
7.101	D.C. distribution boards marked with (IEC 60335-2-29):		N/A
	- maximum output current (A) for each output circuit :		N/A
	- types of any additional power supply which can be connected		N/A
8	PROTECTION AGAINST ACCESS TO LIVE PARTS		P
8.1	Adequate protection against accidental contact with live parts		P
	During insertion or removal of batteries having a battery voltage exceeding 42,4 V, protection against contact with live parts of the battery or of the battery charger ensured (IEC 60335-2-29)		N/A
8.1.1	Requirement applies for all positions, detachable parts removed		P
	Lamps behind a detachable cover not removed, if conditions met		N/A
	Insertion or removal of lamps, protection against contact with live parts of the lamp cap		N/A
	Use of test probe B of IEC 61032, with a force not exceeding 1 N: no contact with live parts	Test probe B not contact with live part	P
	Use of test probe B of IEC 61032 through openings, with a force of 20N: no contact with live parts		N/A
8.1.2	Use of test probe 13 of IEC 61032, with a force not exceeding 1 N, through openings in class 0 appliances and class II appliances/constructions: no contact with live parts		P
	Test probe 13 also applied through openings in earthed metal enclosures having a non-conductive coating: no contact with live parts		N/A
8.1.3	For appliances other than class II, use of test probe 41 of IEC 61032, with a force not exceeding 1 N: no contact with live parts of visible glowing heating elements or supporting parts		N/A
	For a single switching action obtained by a switching device, requirements as specified		N/A
	For appliances with a supply cord and without a switching device, the single switching action may be obtained by the withdrawal of the plug		N/A
8.1.4	Accessible part not considered live if:		P
	- safety extra-low a.c. voltage: peak value not exceeding 42.4 V		N/A

IEC 60335-2-29			
Clause	Requirement + Test	Result - Remark	Verdict
	- safety extra-low d.c. voltage: not exceeding 42.4 V	Max. 15.51V at output terminal (no load) for models FY1501509000	P
	- or separated from live parts by protective impedance		P
	If protective impedance: d.c. current not exceeding 2 mA, and		N/A
	a.c. peak value not exceeding 0.7 mA	Max. 0.264mA _{peak} (normal condition) CY7=CY8=3300pF	P
	- for peak values over 42.4 V up to and including 450 V, capacitance not exceeding 0,1 μF		P
	- for peak values over 450 V up to and including 15 kV, discharge not exceeding 45 μC		N/A
	- for peak values over 15kV, the energy in the discharge not exceeding 350 mJ		N/A
	For type 2 battery chargers, voltages and currents are also measured between relevant accessible parts of opposite polarity (IEC 60335-2-29:2016/AMD1:2019)		N/A
8.1.5	Live parts protected at least by basic insulation before installation or assembly:		N/A
	- built-in appliances		N/A
	- fixed appliances		N/A
	- appliances delivered in separate units		N/A
8.2	Class II appliances and constructions constructed so that there is adequate protection against accidental contact with basic insulation and metal parts separated from live parts by basic insulation only		P
	Only possible to touch parts separated from live parts by double or reinforced insulation		P
9	STARTING OF MOTOR-OPERATED APPLIANCES		N/A
	Requirements and tests are specified in part 2 when necessary		N/A
10	POWER INPUT AND CURRENT		P
10.1	Power input at normal operating temperature, rated voltage and normal operation not deviating from rated power input by more than shown in table 1		N/A
	If the power input varies throughout the operating cycle and the maximum value of the power input exceeds, by a factor greater than two, the arithmetic mean value of the power input occurring during a representative period, the power input is the maximum value that is exceeded for more than 10 % of the representative period		N/A

IEC 60335-2-29			
Clause	Requirement + Test	Result - Remark	Verdict
	Otherwise the power input is the arithmetic mean value		N/A
	Test carried out at upper and lower limits of the ranges for appliances with one or more rated voltage ranges, unless		N/A
	the rated power input is related to the arithmetic mean value		N/A
10.2	Current at normal operating temperature, rated voltage and normal operation not deviating from rated current by more than shown in table 2	(see appended table)	P
	If the current varies throughout the operating cycle and the maximum value of the current exceeds, by a factor greater than two, the arithmetic mean value of the current occurring during a representative period, the current is the maximum value that is exceeded for more than 10 % of the representative period		N/A
	Otherwise the current is the arithmetic mean value		N/A
	Test carried out at upper and lower limits of the ranges for appliances with one or more rated voltage ranges, unless		P
	the rated current is related to the arithmetic mean value of the range		N/A
10.101	The DC output voltage of type 1 battery chargers not exceed 120 V (IEC 60335-2-29:2016/AMD1:2019)....	Max. 67.3V for model FY1506722000	P
	The DC output voltage of type 2 battery chargers not exceed 250 V (IEC 60335-2-29:2016/AMD1:2019)....		N/A
10.102	For type 1 battery chargers, the arithmetic mean value of the output current not deviate from the rated DC output current by more than 10 % (IEC 60335-2-29:2016/AMD1:2019)	(see appended table)	P
	For type 2 battery chargers, the arithmetic mean value of the output current not exceed the rated DC output current by more than 10 % (IEC 60335-2-29:2016/AMD1:2019)		N/A
11	HEATING		P
11.1	No excessive temperatures in normal use		P
11.2	The appliance is held, placed or fixed in position as described		P
	Battery chargers placed in the test corner as specified for heating appliances (IEC 60335-2-29)		P
11.3	Temperature rises, other than of windings, determined by thermocouples		P
	Temperature rises of windings determined by resistance method, unless		N/A

IEC 60335-2-29			
Clause	Requirement + Test	Result - Remark	Verdict
	the windings are non-uniform or it is difficult to make the necessary connections	Transformer winding	P
11.4	Heating appliances operated under normal operation at 1,15 times rated power input (W)		N/A
11.5	Battery chargers are operated under normal operation and supplied with the most unfavourable voltage between 0,94 times and 1,06 times the rated voltage.	(see appended table)	P
11.6	Combined appliances operated under normal operation at most unfavourable voltage between 0,94- and 1,06-times rated voltage (V)		N/A
11.7	Battery chargers operated until steady conditions are established (IEC 60335-2-29)	Test until steady conditions established.	P
11.8	Temperature rises monitored continuously and not exceeding the values in table 3	(see appended table)	P
	If the temperature rise of a motor winding exceeds the value of table 3, or		N/A
	if there is doubt with regard to classification of insulation,		N/A
	tests of Annex C are carried out		N/A
	Sealing compound does not flow out		P
	Protective devices do not operate, except		P
	components in protective electronic circuits tested for the number of cycles specified in 24.1.4		N/A
13	LEAKAGE CURRENT AND ELECTRIC STRENGTH AT OPERATING TEMPERATURE		P
13.1	Leakage current not excessive and electric strength adequate		P
	Heating appliances operated at 1.15 times the rated power input (W).....		N/A
	Motor-operated appliances and combined appliances supplied at 1,06 times the rated voltage (V)	(see appended table)	P
	Protective impedance and radio interference filters disconnected before carrying out the tests		P
13.2	The leakage current is measured by means of the circuit described in Figure 4 of IEC 60990:1999		P
	For class 0I appliances and class I appliances, except parts of class II construction, C may be replaced by a low impedance ammeter	Class II appliance	N/A
	Leakage current measurements	(see appended table)	P
13.3	The appliance is disconnected from the supply		P
	Electric strength tests according to table 4	(see appended table)	P

IEC 60335-2-29			
Clause	Requirement + Test	Result - Remark	Verdict
	No breakdown during the tests		P
14	TRANSIENT OVERVOLTAGES		P
	Appliances withstand the transient over-voltages to which they may be subjected		P
	Clearances having a value less than specified in table 16 subjected to an impulse voltage test, the test voltage specified in table 6		N/A
	No flashover during the test, unless		N/A
	of functional insulation if the appliance complies with clause 19 with the clearance short-circuited		N/A
15	MOISTURE RESISTANCE		P
15.1	Enclosure provides the degree of moisture protection according to classification of the appliance	IP20	N/A
	Compliance checked as specified in 15.1.1, taking into account 15.1.2, followed by the electric strength test of 16.3		N/A
	No trace of water on insulation which can result in a reduction of clearances or creepage distances below values specified in clause 29		N/A
15.1.1	Appliances, other than IPX0, subjected to tests as specified in IEC 60529	IP20	N/A
	Water valves containing live parts in external hoses for connection of an appliance to the water mains tested as specified for IPX7 appliances		N/A
15.1.2	Hand-held appliance turned continuously through the most unfavourable positions during the test		N/A
	Built-in appliances installed according to the instructions		N/A
	Appliances placed or used on the floor or table placed on a horizontal unperforated support		N/A
	Appliances normally fixed to a wall and appliances with pins for insertion into socket-outlets are mounted on a wooden board		N/A
	For IPX3 appliances, the base of wall mounted appliances is placed at the same level as the pivot axis of the oscillating tube		N/A
	For IPX4 appliances, the horizontal centre line of the appliance is aligned with the pivot axis of the oscillating tube, and		N/A
	for appliances normally used on the floor or table, the movement is limited to two times 90° for a period of 5 min, the support being placed at the level of the pivot axis of the oscillating tube		N/A

IEC 60335-2-29			
Clause	Requirement + Test	Result - Remark	Verdict
	Wall-mounted appliances, take into account the distance to the floor stated in the instructions		N/A
	Appliances normally fixed to a ceiling are mounted underneath a horizontal unperforated support, the pivot axis of the oscillating tube located at the level of the underside of the support, and		N/A
	for IPX4 appliances, the movement of the tube is limited to two times 90° from the vertical for a period of 5 min		N/A
	Appliances with type X attachment fitted with a flexible cord as described		N/A
	Detachable parts subjected to the relevant treatment with the main part		N/A
	However, if a part has to be removed for user maintenance and a tool is needed, this part is not removed		N/A
15.2	Spillage of liquid does not affect the electrical insulation		N/A
	Spillage solution comprising water containing approximately 1 % NaCl and 0,6 % rinsing agent		N/A
	Appliances with type X attachment fitted with a flexible cord as described		N/A
	Appliances incorporating an appliance inlet tested with or without a connector, whichever is most unfavourable		N/A
	Detachable parts are removed		N/A
	Overfilling test with additional amount of the solution, over a period of 1 min (l).....:		N/A
	The appliance withstands the electric strength test of 16.3		N/A
	No trace of water on insulation that can result in a reduction of clearances or creepage distances below values specified in clause 29		N/A
15.3	Appliances proof against humid conditions		P
	Checked by test Cab: Damp heat steady state in IEC 60068-2-78		P
	Detachable parts removed and subjected, if necessary, to the humidity test with the main part		N/A
	Humidity test for 48 h in a humidity cabinet	93% RH, 25°C, 48h	P
	Reassembly of those parts that may have been removed		N/A
	The appliance withstands the tests of clause 16	No breakdown observed.	P
16	LEAKAGE CURRENT AND ELECTRIC STRENGTH		P

IEC 60335-2-29			
Clause	Requirement + Test	Result - Remark	Verdict
16.1	Leakage current not excessive and electric strength adequate		P
	Protective impedance disconnected from live parts before carrying out the tests		P
	Tests carried out at room temperature and not connected to the supply		P
16.2	Single-phase appliances: test voltage 1,06 times rated voltage (V)	(see appended table)	P
	Three-phase appliances: test voltage 1,06 times rated voltage divided by $\sqrt{3}$ (V)		N/A
	Leakage current measurements	(see appended table)	P
	Limit values doubled if:		N/A
	- all controls have an off position in all poles, or		N/A
	- the appliance has no control other than a thermal cut-out, or		N/A
	- all thermostats, temperature limiters and energy regulators do not have an off position, or		N/A
	- the appliance has radio interference filters		N/A
	With the radio interference filters disconnected, the leakage current do not exceed limits specified		N/A
16.3	Electric strength tests according to table 7	(see appended table)	P
	Test voltage applied between the supply cord and inlet bushing and cord guard and cord anchorage as specified	(see appended table)	P
	No breakdown during the tests		P
17	OVERLOAD PROTECTION OF TRANSFORMERS AND ASSOCIATED CIRCUITS		
	No excessive temperatures in transformer or associated circuits in event of short-circuits likely to occur in normal use	(see appended table)	P
	Appliance supplied with 1,06- or 0,94-times rated voltage under the most unfavourable short-circuit or overload likely to occur in normal use (V)	(see appended table)	P
	Output terminals of battery chargers short-circuited (IEC 60335-2-29)	Unit shut down immediately when output terminals short-circuited	P
	Basic insulation is not short-circuited		P
	Temperature rise of insulation of the conductors of safety extra-low voltage circuits not exceeding the relevant value specified in table 3 by more than 15 K		N/A
	Temperature of the winding not exceeding the value specified in table 8		P

IEC 60335-2-29			
Clause	Requirement + Test	Result - Remark	Verdict
	However, limits do not apply to fail-safe transformers complying with sub-clause 15.5 of IEC 61558-1		N/A
18	ENDURANCE		N/A
	Requirements and tests are specified in part 2 when necessary		N/A
19	ABNORMAL OPERATION		P
19.1	The risk of fire, mechanical damage or electric shock under abnormal or careless operation obviated		P
	Electronic circuits so designed and applied that a fault will not render the appliance unsafe	(see appended table)	P
	Appliances incorporating heating elements subjected to the tests of 19.2 and 19.3, and		N/A
	if the appliance also has a control that limit the temperature during clause 11 it is subjected to the test of 19.4, and		N/A
	if applicable, to the test of 19.5		N/A
	Appliances incorporating PTC heating elements are also subjected to the test of 19.6		N/A
	Appliances incorporating motors subjected to the tests of 19.7 to 19.10, as applicable		N/A
	Appliances incorporating electronic circuits subjected to the tests of 19.11 and 19.12 and 19.101 to 19.103, as applicable (IEC 60335-2-29)		P
	Appliances incorporating electronic circuits subjected to the tests of 19.11 and 19.12, as applicable		P
	Appliances incorporating contactors or relays subjected to the test of 19.14, being carried out before the tests of 19.11		N/A
	Appliances incorporating voltage selector switches subjected to the test of 19.15		N/A
	Unless otherwise specified, the tests are continued until a non-self-resetting thermal cut-out operates, or		N/A
	until steady conditions are established		P
	If a heating element or intentionally weak part becomes open-circuited, the relevant test is repeated on a second sample		N/A
19.2	Test of appliances with heating elements with restricted heat dissipation; test voltage (V), power input of 0,85 times rated power input (W).....:	No heating elements	N/A
19.3	Test of 19.2 repeated; test voltage (V), power input of 1,24 times rated power input (W).....:		N/A

IEC 60335-2-29			
Clause	Requirement + Test	Result - Remark	Verdict
19.4	Test conditions as in clause 11, any control limiting the temperature during tests of clause 11 short-circuited		N/A
19.5	Test of 19.4 repeated on Class 0I and I appliances with tubular sheathed or embedded heating elements. No short-circuiting, but one end of the element connected to the sheath		N/A
	The test repeated with reversed polarity and the other end of the heating element connected to the sheath		N/A
	The test is not carried out on appliances intended to be permanently connected to fixed wiring and on appliances where an all-pole disconnection occurs during the test of 19.4		N/A
19.6	Appliances with PTC heating elements tested at rated voltage, establishing steady conditions		N/A
	The working voltage of the PTC heating element is increased by 5% and the appliance is operated until steady conditions are re-established. The voltage is then increased in similar steps until 1,5 times working voltage or until the PTC heating element ruptures (V):		N/A
19.7	Stalling test by locking the rotor if the locked rotor torque is smaller than the full load torque, or		N/A
	locking moving parts of other appliances		N/A
	Locked rotor, capacitors open-circuited one at a time		N/A
	Test repeated with capacitors short-circuited one at a time, unless		N/A
	the capacitor is of class S2 or S3 of IEC 60252-1		N/A
	Appliances with timer or programmer supplied with rated voltage for each of the tests, for a period equal to the maximum period allowed		N/A
	An electronic timer or programmer that operates to ensure compliance with the test before the maximum period under the conditions of Clause 11 is reached, is a protective electronic circuit		N/A
	Other appliances supplied with rated voltage for a period as specified		N/A
	Winding temperatures not exceeding values specified in table 8		N/A
19.8	Multi-phase motors operated at rated voltage with one phase disconnected		N/A
19.9	Running overload test on appliances incorporating motors intended to be remotely or automatically controlled or liable to be operated continuously		N/A

IEC 60335-2-29			
Clause	Requirement + Test	Result - Remark	Verdict
	Motor-operated and combined appliances for which 30.2.3 is applicable and that use overload protective devices relying on electronic circuits to protect the motor windings, are also subjected to the test		N/A
	Winding temperatures not exceeding values as specified.....:		N/A
19.10	Series motor operated at 1,3 times rated voltage for 1 min (V)		N/A
	During the test, parts not being ejected from the appliance		N/A
19.11	Electronic circuits, compliance checked by evaluation of the fault conditions specified in 19.11.2 for all circuits or parts of circuits, unless		P
	they comply with the conditions specified in 19.11.1		N/A
	Appliances incorporating an electronic circuit that relies upon a programmable component to function correctly, subjected to the test of 19.11.4.8, unless		N/A
	restarting does not result in a hazard		P
	Appliances having a device with an off position obtained by electronic disconnection, or a device placing the appliance in a stand-by mode, subjected to the tests of 19.11.4		N/A
	If the safety of the appliance under any of the fault conditions depends on the operation of a miniature fuse-link complying with IEC 60127, the test of 19.12 is carried out		P
	During and after each test the following is checked:		P
	- the temperature of the windings do not exceed the values specified in table 8		P
	- the appliance complies with the conditions specified in 19.13		P
	- any current flowing through protective impedance not exceeding the limits specified in 8.1.4	See clause 8.1.4	P
	If a conductor of a printed board becomes open-circuited, the appliance is considered to have withstood the particular test, provided both of the following conditions are met:		N/A
	- the base material of the printed circuit board withstands the test of Annex E		N/A
	- any loosened conductor does not reduce clearance or creepage distances between live parts and accessible metal parts below the values specified in clause 29		N/A
19.11.1	Fault conditions a) to g) in 19.11.2 are not applied to circuits or parts of circuits meeting both of the following conditions:		N/A

IEC 60335-2-29			
Clause	Requirement + Test	Result - Remark	Verdict
	- the electronic circuit is a low-power circuit, that is, the maximum power at low-power points does not exceed 15 W according to the tests specified		N/A
	- the protection against electric shock, fire hazard, mechanical hazard or dangerous malfunction of other parts of the appliance does not rely on the correct functioning of the electronic circuit		N/A
19.11.2	Fault conditions applied one at a time, the appliance operating under conditions specified in clause 11, but supplied at rated voltage, duration of the tests as specified:		P
	a) short circuit of functional insulation if clearances or creepage distances are less than the values specified in clause 29	(see appended table)	P
	b) open circuit at the terminals of any component	(see appended table)	P
	c) short circuit of capacitors, unless	(see appended table)	P
	they comply with IEC 60384-14	(see appended table)	P
	d) short circuit of any two terminals of an electronic component, other than integrated circuits	(see appended table)	P
	This fault condition is not applied between the two circuits of an optocoupler		P
	e) failure of triacs in the diode mode		N/A
	f) failure of microprocessors and integrated circuits	(see appended table)	P
	g) failure of an electronic power switching device		N/A
	Each low power circuit is short-circuited by connecting the low-power point to the pole of the supply source from which the measurements were made		N/A
19.11.3	If the appliance incorporates a protective electronic circuit that operates to ensure compliance with clause 19, the appliance is tested as specified		N/A
19.11.4	Appliances having a device with an off position obtained by electronic disconnection, or		N/A
	a device that can be placed in the stand-by mode,		N/A
	subjected to the tests of 19.11.4.1 to 19.11.4.7, the device being set in the off position or in the stand-by mode		N/A
	Appliances incorporating a protective electronic circuit subjected to the tests of 19.11.4.1 to 19.11.4.7, the tests being carried out after the protective electronic circuit has operated, except that		N/A
	appliances operated for 30 s or 5 min during the test of 19.7 are not subjected to the tests for electromagnetic phenomena		N/A

IEC 60335-2-29			
Clause	Requirement + Test	Result - Remark	Verdict
	Surge protective devices disconnected, unless		N/A
	They incorporate spark gaps		N/A
19.11.4.1	The appliance is subjected to electrostatic discharges in accordance with IEC 61000-4-2, test level 4		N/A
19.11.4.2	The appliance is subjected to radiated fields in accordance with IEC 61000-4-3, at frequency ranges specified		N/A
19.11.4.3	The appliance is subjected to fast transient bursts in accordance with IEC 61000-4-4, test level 3 or 4 as specified		N/A
19.11.4.4	The power supply terminals of the appliance subjected to voltage surges in accordance with IEC 61000-4-5, test level 3 or 4 as specified		N/A
	An open circuit test voltage of 2 kV is applicable for the line-to-line coupling mode		N/A
	An open circuit test voltage of 4 kV is applicable for the line-to-earth coupling		N/A
	Earthed heating elements in class I appliances disconnected		N/A
19.11.4.5	The appliance is subjected to injected currents in accordance with IEC 61000-4-6, test level 3		N/A
19.11.4.6	Appliances having a rated current not exceeding 16 A are subjected to the Class 3 voltage dips and interruptions in accordance with IEC 61000-4-11		N/A
	Appliances having a rated current exceeding 16 A are subjected to the Class 3 voltage dips and interruptions in accordance with IEC 61000-4-34		N/A
19.11.4.7	The appliance is subjected to mains signals in accordance with IEC 61000-4-13, test level class 2		N/A
19.11.4.8	The appliance is supplied at rated voltage and operated under normal operation. After 60s the power supply is reduced to a level such that the appliance ceases to respond or parts controlled by the programmable component cease to operate		N/A
	The appliance continues to operate normally, or		N/A
	requires a manual operation to restart		N/A
19.12	If the safety of the appliance for any of the fault conditions specified in 19.11.2 depends on the operation of a miniature fuse-link complying with IEC 60127, the test is repeated, measuring the current flowing through the fuse-link; measured current (A); rated current of the fuse-link (A)	(see appended table)	P

IEC 60335-2-29			
Clause	Requirement + Test	Result - Remark	Verdict
19.13	During the tests the appliance does not emit flames, molten metal, poisonous or ignitable gas in hazardous amounts		P
	Temperature rises not exceeding the values shown in table 9	(see appended table)	P
	During the tests, the values of Table 8 apply (IEC 60335-2-29)		P
	Compliance with clause 8 not impaired		P
	No rupture of the battery (IEC 60335-2-29)		P
	If the appliance can still be operated it complies with 20.2		N/A
	Insulation, other than of class III appliances or class III constructions that do not contain live parts, withstands the electric strength test of 16.3, the test voltage as specified in table 4:		P
	- basic insulation (V)	(see appended table)	P
	- supplementary insulation (V)	(see appended table)	P
	- reinforced insulation (V).....	(see appended table)	P
	After operation or interruption of a control, clearances and creepage distances across the functional insulation withstand the electric strength test of 16.3, the test voltage being twice the working voltage		P
	The appliance does not undergo a dangerous malfunction, and		P
	no failure of protective electronic circuits, if the appliance is still operable		N/A
	Appliances tested with an electronic switch in the off position, or in the stand-by mode:		N/A
	- do not become operational, or		N/A
	- if they become operational, do not result in a dangerous malfunction during or after the tests of 19.11.4		N/A
	If the appliance contains lids or doors that are controlled by one or more interlocks, one of the interlocks may be released provided that:		N/A
	- the lid or door does not move automatically to an open position when the interlock is released, and		N/A
	- the appliance does not start after the cycle in which the interlock was released		N/A
19.14	Appliances operated under the conditions of clause 11, any contactor or relay contact operating under the conditions of clause 11 being short-circuited		N/A
	For a relay or contactor with more than one contact, all contacts are short-circuited at the same time		N/A

IEC 60335-2-29			
Clause	Requirement + Test	Result - Remark	Verdict
	A relay or contactor operating only to ensure the appliance is energized for normal use is not short-circuited		N/A
	If more than one relay or contactor operates in clause 11, they are short-circuited in turn		N/A
19.15	For appliances with a mains voltage selector switch, the switch is set to the lowest rated voltage position and the highest value of rated voltage is applied		N/A
19.101	Battery chargers supplied at rated voltage and operated under normal operation, any control limiting the temperature during tests of clause 11 short-circuited (IEC 60335-2-29)		P
19.102	Reverse connection of battery chargers to a fully charged battery at rated voltage (IEC 60335-2-29)	The output terminals prevent the reverse connection	N/A
	The capacity of the battery (IEC 60335-2-29)		N/A
19.103	Battery chargers intended to be used with a d.c. distribution board supplied at rated voltage and operated under normal operation, load increased as specified until protective device operates or short-circuit conditions are established (IEC 60335-2-29)		N/A
20	STABILITY AND MECHANICAL HAZARDS		P
20.1	Appliances having adequate stability		P
	Tilting test through an angle of 10°, appliance placed on an inclined plane/horizontal support, not connected to the supply mains; appliance does not overturn		P
	Tilting test repeated on appliances with heating elements, angle of inclination increased to 15°		N/A
	Possible heating test in overturned position; temperature rise does not exceed values shown in table 9		N/A
20.2	Moving parts adequately arranged or enclosed as to provide protection against personal injury	No moving parts inside	N/A
	Protective enclosures, guards and similar parts are non-detachable, and		N/A
	have adequate mechanical strength		N/A
	Enclosures that can be opened by overriding an interlock are considered to be detachable parts		N/A
	Self-resetting thermal cut-outs and overcurrent protective devices not causing a hazard by unexpected closure		N/A
	Not possible to touch dangerous moving parts with the test probe described		N/A
21	MECHANICAL STRENGTH		P

IEC 60335-2-29			
Clause	Requirement + Test	Result - Remark	Verdict
21.1	Appliance has adequate mechanical strength and is constructed as to withstand rough handling		P
	Checked by applying 3 blows to every point of the enclosure like to be weak, in accordance with test Ehb of IEC 60068-2-75, spring hammer test, with an impact energy of 1,0 J ± 0,05 J (IEC 60335-2-29)	(see appended table)	P
	The appliance shows no damage impairing compliance with this standard, and		P
	compliance with 8.1, 15.1 and clause 29 not impaired		P
	If doubt, supplementary or reinforced insulation subjected to the electric strength test of 16.3		N/A
	If necessary, repetition of groups of three blows on a new sample		N/A
21.2	Accessible parts of solid insulation having strength to prevent penetration by sharp implements		P
	Test not applicable if the thickness of supplementary insulation is at least 1 mm and reinforced insulation at least 2 mm	Enclosure used as reinforce insulation. Thickness of enclosure: 2.0mm.	P
	The insulation is tested as specified, and does withstand the electric strength test of 16.3		P
21.101	Battery chargers, other than built-in battery chargers, having a mass not exceeding 5 kg, subjected to free-fall procedure of IEC 60068-2-31 (IEC 60335-2-29)	Three drops on concrete floor, no damage.	P
	Battery chargers show no damage that could impair compliance with 8.1, 15.1.1, 16.3 and cl. 29 (IEC 60335-2-29)		P
21.102	Battery chargers for installing in caravans and similar vehicles withstand vibrations to which they may be subjected (IEC 60335-2-29)	Not for installing in caravans.	N/A
	Vibration test as specified in IEC 60068-2-6 under conditions specified (IEC 60335-2-29)		N/A
	Battery chargers show no damage that could impair compliance with 8.1, 15.1.1, 16.3 and cl. 29 (IEC 60335-2-29)		N/A
	Connections have not worked loose (IEC 60335-2-29)		N/A
22	CONSTRUCTION		P
22.1	Appliance marked with the first numeral of the IP system, relevant requirements of IEC 60529 are fulfilled	IP20	P
22.2	Stationary appliance: means to ensure all-pole disconnection from the supply being provided:		N/A
	- a supply cord fitted with a plug, or		N/A

IEC 60335-2-29			
Clause	Requirement + Test	Result - Remark	Verdict
	- a switch complying with 24.3, or		N/A
	- a statement in the instruction sheet that a disconnection incorporated in the fixed wiring is to be provided, or		N/A
	- an appliance inlet		N/A
	Single-pole switches and single-pole protective devices for the disconnection of heating elements in single-phase, permanently connected class 01 and class I appliances, connected to the phase conductor		N/A
22.3	Appliance provided with pins: no undue strain on socket-outlets		N/A
	Applied torque not exceeding 0,25 Nm		N/A
	Pull force of 50N to each pin after the appliance has been placed in the heating cabinet; when cooled to room temperature the pins are not displaced by more than 1mm		N/A
	Each pin subjected to a torque of 0.4Nm; the pins are not rotating, unless		N/A
	rotating does not impair compliance with this standard		N/A
22.4	Appliance for heating liquids and appliance causing undue vibration not provided with pins for insertion into socket-outlets		N/A
22.5	No risk of electric shock when touching pins, for appliances having a capacitor with rated capacitance equal to or greater than 0,1 μ F, the appliance being disconnected from the supply at the instant of voltage peak		P
	Voltage not exceeding 34 V (V)	Measured: 12V	P
	If compliance relies on the operation of an electronic circuit, the electromagnetic phenomena tests of 19.11.4.3 and 19.11.4.4 are applied		N/A
	The discharge test is then repeated three times, voltage not exceeding 34 V (V).....		N/A
22.6	Electrical insulation not affected by condensing water or leaking liquid		N/A
	Electrical insulation of Class II appliances not affected if a hose ruptures or seal leaks		N/A
	In case of doubt, test as described		N/A
22.7	Adequate safeguards against the risk of excessive pressure in appliances containing liquid or gases or having steam-producing devices		N/A

IEC 60335-2-29			
Clause	Requirement + Test	Result - Remark	Verdict
22.8	Electrical connections not subject to pulling during cleaning of compartments to which access can be gained without the aid of a tool, and that are likely to be cleaned in normal use		N/A
22.9	Insulation, internal wiring, windings, commutators and slip rings not exposed to oil, grease or similar substances, unless		P
	the substance has adequate insulating properties		N/A
22.10	Not possible to reset voltage-maintained non-self-resetting thermal cut-outs by the operation of an automatic switching device incorporated within the appliance, if:		N/A
	- a non-self-resetting thermal cut-out is required by the standard, and		N/A
	- a voltage maintained non-self-resetting thermal cut-out is used to meet it		N/A
	Non-self-resetting thermal motor protectors have a trip-free action, unless		N/A
	they are voltage maintained		N/A
	Reset buttons of non-self-resetting controls so located or protected that accidental resetting is unlikely		N/A
22.11	Reliable fixing of non-detachable parts that provide the necessary degree of protection against electric shock, moisture or contact with moving parts	Enclosure is compressed by ultrasonic welding.	P
	Obvious locked position of snap-in devices used for fixing such parts		N/A
	No deterioration of the fixing properties of snap-in devices used in parts that are likely to be removed during installation or servicing		N/A
	Tests as described	50N, 10s applied on enclosure	P
22.12	Handles, knobs etc. fixed in a reliable manner, if loosening result in a hazard		N/A
	Removing or fixing in wrong position of handles, knobs etc. indicating position of switches or similar components not possible, if resulting in a hazard		N/A
	A choking hazard does not apply to appliances for commercial use		N/A
	Axial force 15 N applied to parts, the shape being so that an axial pull is unlikely to be applied		N/A
	Axial force 30 N applied to parts, the shape being so that an axial pull is likely to be applied		N/A

IEC 60335-2-29			
Clause	Requirement + Test	Result - Remark	Verdict
	If the part is removed and can be contained within the small parts cylinder, it is considered to be a choking hazard		N/A
22.13	Unlikely that handles, when gripped as in normal use, make the operator's hand touch parts having a temperature rise exceeding the value specified for handles which are held for short periods only		N/A
22.14	No ragged or sharp edges creating a hazard for the user in normal use, or during user maintenance		P
	No exposed pointed ends of self-tapping screws or other fasteners, likely to be touched by the user in normal use or during user maintenance		P
22.15	Storage hooks and the like for flexible cords smooth and well rounded		N/A
22.16	Automatic cord reels cause no undue abrasion or damage to the sheath of the flexible cord, no breakage of conductors strands and no undue wear of contacts		N/A
	Cord reel tested with 6000 operations, as specified		N/A
	Electric strength test of 16.3, voltage of 1000 V applied		N/A
22.17	Spacers not removable from the outside by hand or by means of a screwdriver or a spanner		N/A
22.18	Current-carrying parts and other metal parts resistant to corrosion		P
22.19	Driving belts not relied upon to provide the required level of insulation, unless		N/A
	constructed to prevent inappropriate replacement		N/A
22.20	Direct contact between live parts and thermal insulation effectively prevented, unless	No thermal insulation	N/A
	material used is non-corrosive, non-hygroscopic and non-combustible		N/A
22.21	Wood, cotton, silk, ordinary paper and fibrous or hygroscopic material not used as insulation, unless	No such material used	P
	impregnated		N/A
	This requirement does not apply to magnesium oxide and mineral ceramic fibres used for the electrical insulation of heating elements		N/A
22.22	Appliances not containing asbestos		P
22.23	Oils containing polychlorinated biphenyl (PCB) not used		P
22.24	Bare heating elements, except in class III appliances or class III constructions that do not contain live parts, adequately supported		N/A

IEC 60335-2-29			
Clause	Requirement + Test	Result - Remark	Verdict
	In case of rupture, the heating conductor is unlikely to come in contact with accessible metal parts		N/A
22.25	Sagging heating conductors, except in class III appliances or class III constructions that do not contain live parts, cannot come into contact with accessible metal parts		N/A
22.26	The output circuit of a type 1 battery charger supplied through a safety isolating transformer and shall not be connected to accessible metal parts or an earthing terminal (IEC 60335-2-29:2016/AMD1:2019)		P
	The insulation between parts operating at safety extra-low voltage and live parts comply with the requirements for double insulation or reinforced insulation (IEC 60335-2-29:2016/AMD1:2019)		P
	The output circuit of a type 2 battery charger supplied through an isolating transformer and shall not be connected to accessible metal parts or an earthing terminal (IEC 60335-2-29:2016/AMD1:2019)		N/A
	The insulation between parts operating at safety extra-low voltage and live parts comply with the requirements for double insulation or reinforced insulation (IEC 60335-2-29:2016/AMD1:2019)		N/A
22.27	Parts connected by protective impedance separated by double or reinforced insulation		P
22.28	Metal parts of Class II appliances conductively connected to gas pipes or in contact with water, separated from live parts by double or reinforced insulation		N/A
22.29	Class II appliances permanently connected to fixed wiring so constructed that the required degree of access to live parts is maintained after installation		N/A
22.30	Parts serving as supplementary or reinforced insulation fixed so that they cannot be removed without being seriously damaged, or		P
	so constructed that they cannot be replaced in an incorrect position, and so that if they are omitted, the appliance is rendered inoperable or manifestly incomplete		N/A
22.31	Neither clearances nor creepage distances over supplementary and reinforced insulation reduced below values specified in clause 29 as a result of wear		P
	Neither clearances nor creepage distances between live parts and accessible parts reduced below values for supplementary insulation if wires, screws etc. become loose	Output wire is soldered on PCB and fixed by glue additionally	P

IEC 60335-2-29			
Clause	Requirement + Test	Result - Remark	Verdict
22.32	Supplementary and reinforced insulation constructed or protected against pollution so that clearances or creepage distances are not reduced below the values in clause 29		P
	Supplementary insulation of natural or synthetic rubber resistant to ageing, or arranged and dimensioned so that creepage distances are not reduced below values specified in 29.2		N/A
	Ceramic material not tightly sintered, similar materials or beads alone not used as supplementary or reinforced insulation	No such material used	N/A
	Ceramic and similar porous material in which heating conductors are embedded is considered to be basic insulation, not reinforced insulation		N/A
	Oxygen bomb test at 70 °C for 96 h and 16 h at room temperature		N/A
22.33	Conductive liquids that are or may become accessible in normal use and conductive liquids that are in contact with unearthed accessible metal parts are not in direct contact with live parts, or		N/A
	unearthed metal parts separated from live parts by basic insulation only		N/A
	Electrodes not used for heating liquids		N/A
	For class II constructions, conductive liquids that are or may become accessible in normal use and conductive liquids that are in contact with unearthed accessible metal parts, not in direct contact with basic or reinforced insulation, unless		N/A
	the reinforced insulation consists of at least 3 layers		N/A
	For class II constructions, conductive liquids which are in contact with live parts, not in direct contact with reinforced insulation, unless		N/A
	the reinforced insulation consists of at least 3 layers		N/A
	An air layer not used as basic or supplementary insulation in a double insulation system if likely to be bridged by leaking liquid		N/A
22.34	Shafts of operating knobs, handles, levers etc. not live, unless		N/A
	the shaft is not accessible when the part is removed		N/A
22.35	For other than class III constructions, handles, levers and knobs, held or actuated in normal use, not becoming live in the event of a failure of basic insulation		N/A

IEC 60335-2-29			
Clause	Requirement + Test	Result - Remark	Verdict
	Such parts being of metal, and their shafts or fixings are likely to become live in the event of a failure of basic insulation, are either adequately covered by insulation material or their accessible parts are separated from their shafts or fixings by supplementary insulation		N/A
	This requirement does not apply to handles, levers and knobs on stationary appliances and cordless appliances, other than those of electrical components, provided they are reliably connected to an earthing terminal or earthing contact, or separated from live parts by earthed metal		N/A
	Insulating material covering metal handles, levers and knobs withstand the electric strength test of 16.3 for supplementary insulation		N/A
22.36	For appliances other than class III, handles continuously held in the hand in normal use so constructed that when gripped as in normal use, the operators hand is not likely to touch metal parts, unless	No handles	N/A
	they are separated from live parts by double or reinforced insulation		N/A
22.37	Capacitors in Class II appliances not connected to accessible metal parts and their casings, if of metal, separated from accessible metal parts by supplementary insulation, unless		N/A
	the capacitors comply with 22.42		P
22.38	Capacitors not connected between the contacts of a thermal cut-out		N/A
22.39	Lamp holders used only for the connection of lamps		N/A
22.40	Motor-operated appliances and combined appliances intended to be moved while in operation, or having accessible moving parts, fitted with a switch to control the motor. The actuating member of the switch being easily visible and accessible		N/A
	If the appliance cannot operate continuously, automatically or remotely without giving rise to a hazard, appliances for remote operation being fitted with a switch for stopping the operation. The actuating member of the switch being easily visible and accessible		N/A
22.41	No components, other than lamps, containing mercury		P
22.42	Protective impedance consisting of at least two separate components	Two Y capacitor connected in series (CY7, CY8)	P

IEC 60335-2-29			
Clause	Requirement + Test	Result - Remark	Verdict
	Values specified in 8.1.4 not exceeded if any one of the components are short-circuited or open-circuited	Max. 0.394mA when short-circuited CY8; Limit: 0.7mA	P
	Resistors checked by the test of 14.1 a) in IEC 60065		N/A
	Capacitors checked by the tests for class Y capacitors in IEC 60384-14	Approved Y capacitor used	P
22.43	Appliances adjustable for different voltages, accidental changing of the setting of the voltage unlikely to occur		N/A
22.44	Appliances not having an enclosure that is shaped or decorated like a toy		P
22.45	When air is used as reinforced insulation, clearances not reduced below the values specified in 29.1.3 due to deformation as a result of an external force applied to the enclosure		N/A
22.46	For programmable protective electronic circuits used to ensure compliance with the standard, the software contains measures to control the fault/error conditions in table R.1		N/A
	Software that contains measures to control the fault/error conditions specified in table R.2 is to be specified in parts 2 for particular constructions or to address specific hazards		N/A
	These requirements are not applicable to software used for functional purpose or compliance with clause 11		N/A
22.47	Appliances connected to the water mains withstand the water pressure expected in normal use		N/A
	No leakage from any part, including any inlet water hose		N/A
22.48	Appliances connected to the water mains constructed to prevent backsiphonage of non-potable water		N/A
22.49	For remote operation, the duration of operation is to be set before the appliance can be started, unless		N/A
	the appliance switches off automatically or can operate continuously without hazard		N/A
22.50	Controls incorporated in the appliance take priority over controls actuated by remote operation		N/A
22.51	There is a control on the appliance manually adjusted to the setting for remote operation before the appliance can be operated in this mode		N/A
	There is a visual indication showing that the appliance is adjusted for remote operation		N/A

IEC 60335-2-29			
Clause	Requirement + Test	Result - Remark	Verdict
	These requirements not necessary on appliances that can operate as follows, without giving rise to a hazard:		N/A
	- continuously, or		N/A
	- automatically, or		N/A
	- remotely		N/A
22.52	Socket-outlets on appliances accessible to the user in accordance with the socket-outlet system used in the country in which the appliance is sold		N/A
22.53	Class II appliances and class III appliances that incorporate functionally earthed parts have at least double insulation or reinforced insulation between live parts and the functionally earthed parts		N/A
22.54	Button cells and batteries designated R1 not accessible without the aid of a tool, unless		N/A
	the cover of their compartment can only be opened after at least two independent movements have been applied simultaneously		N/A
22.55	Devices operated to stop the intended function of the appliance, if any, are be distinguished from other manual devices by means of shape, size, surface texture or position		N/A
	The requirement concerning position does not preclude use of a push on push off switch		N/A
	An indication when the device has been operated is given by:		N/A
	– tactile feedback from the actuator or from the appliance, or		N/A
	– reduction in heat output; or		N/A
	– audible and visible feedback		N/A
22.56	Detachable power supply part provided with the part of class III construction		N/A
22.57	The properties of non-metallic materials do not degrade from exposure to UV-C radiation, as specified in Annex T		N/A
	This requirement does not apply to glass, ceramics or similar materials		N/A
22.101	Each circuit supplied from a d.c. distribution board incorporates an overload protective device (IEC 60335-2-29)		N/A
22.102	Battery chargers for installing in caravans and similar vehicles constructed so that they can be securely fixed to a support (IEC 60335-2-29)		N/A

IEC 60335-2-29			
Clause	Requirement + Test	Result - Remark	Verdict
22.102	Keyhole slots, hooks and similar means, without any further means to prevent the battery charger from being inadvertently lifted off the support not considered to be securely fixed (IEC 60335-2-29)		N/A
23	INTERNAL WIRING		P
23.1	Wireways smooth and free from sharp edges		P
	Wires protected against contact with burrs, cooling fins etc.		P
	Wire holes in metal well-rounded or provided with bushings		P
	Wiring effectively prevented from coming into contact with moving parts		N/A
23.2	Beads etc. on live wires cannot change their position, and are not resting on sharp edges		N/A
	Beads inside flexible metal conduits contained within an insulating sleeve		N/A
23.3	Electrical connections and internal conductors movable relatively to each other not exposed to undue stress	Output cord with strain relief bushing	P
	Flexible metallic tubes not causing damage to insulation of conductors		N/A
	Open-coil springs not used		P
	Adequate insulating lining provided inside a coiled spring, the turns of which touch one another		N/A
	No damage after 10 000 flexings for conductors flexed during normal use, or		N/A
	100 flexings for conductors flexed during user maintenance		N/A
	Electric strength test of 16.3, 1000 V between live parts and accessible metal parts		N/A
	Not more than 10% of the strands of any conductor broken, and		N/A
	not more than 30% for wiring supplying circuits that consume no more than 15W		N/A
23.4	Bare internal wiring sufficiently rigid and fixed		P
23.5	The insulation of internal wiring subjected to the supply mains voltage withstanding the electrical stress likely to occur in normal use		P
	Basic insulation electrically equivalent to the basic insulation of cords complying with IEC 60227 or IEC 60245, or		N/A

IEC 60335-2-29			
Clause	Requirement + Test	Result - Remark	Verdict
	no breakdown when a voltage of 2000 V is applied for 15 min between the conductor and metal foil wrapped around the insulation		P
	For class II construction, the requirements for supplementary insulation and reinforced insulation apply,		P
	except that the sheath of a cord complying with IEC 60227 or IEC 60245 may provide supplementary insulation.		N/A
	A single layer of internal wiring insulation does not provide reinforced insulation		P
23.6	Sleeving used as supplementary insulation on internal wiring retained in position by clamping at both ends, or		N/A
	be such that it can only be removed by breaking or cutting		N/A
23.7	The colour combination green/yellow only used for earthing conductors		N/A
23.8	Aluminium wires not used for internal wiring		P
23.9	Stranded conductors not consolidated by soldering where they are subjected to contact pressure, unless	Output wire is double fixed by soldering and glue	P
	the contact pressure is provided by spring terminals		N/A
23.10	The insulation and sheath of internal wiring, incorporated in external hoses for the connection of an appliance to the water mains, at least equivalent to that of light polyvinyl chloride sheathed flexible cord (60227 IEC 52)		N/A
24	COMPONENTS		P
24.1	Components comply with safety requirements in relevant IEC standards		P
	List of components.....:	(see appended table)	P
	Motors not required to comply with IEC 60034-1, they are tested as part of the appliance		N/A
	Relays tested as part of the appliance, or		N/A
	alternatively acc. to IEC 60730-1, and meeting the additional requirements in IEC 60335-1		N/A
	The requirements of Clause 29 apply between live parts of components and accessible parts of the appliance		P
	Components can comply with the requirements for clearances and creepage distances for functional insulation in the relevant component standard		P

IEC 60335-2-29			
Clause	Requirement + Test	Result - Remark	Verdict
	30.2 of this standard apply to parts of non-metallic material in components including parts of non-metallic material supporting current-carrying connections		P
	Components that have not been previously tested to comply with the IEC standard for the relevant component are tested according to the requirements of 30.2		P
	Components that have been previously tested to comply with the resistance to fire requirements in the IEC standard for the relevant component need not be retested provided the specified conditions are met		P
	If these conditions are not satisfied, the component is tested as part of the appliance.		P
	Power electronic converter circuits not required to comply with IEC 62477-1, they are tested as part of the appliance		N/A
	If components have not been tested and found to comply with relevant IEC standard for the number of cycles specified, they are tested in accordance with 24.1.1 to 24.1.9		P
	For components mentioned in 24.1.1 to 24.1.9 no additional tests specified in the relevant component standard are necessary other than those specified in 24.1.1 to 24.1.9		P
	Components not tested and found to comply with relevant IEC standard and components not marked or not used in accordance with its marking, tested under the conditions occurring in the appliance		P
	Lampholders and starterholders that have not being tested and found to comply with the relevant IEC standard, tested as a part of the appliance and additionally according to the gauging and interchangeability requirements of the relevant IEC standard		N/A
	No additional tests specified for nationally standardized plugs such as those detailed in IEC/TR 60083 or connectors complying with the standard sheets of IEC 60320-1 and IEC 60309		P
24.1.1	Capacitors likely to be permanently subjected to the supply voltage and used for radio interference suppression or for voltage dividing, comply with IEC 60384-14	X, Y capacitor complying with IEC 60384-14	P
	If the capacitors have to be tested, they are tested according to Annex F		N/A
24.1.2	Transformers in associated switch mode power supplies comply with Annex BB of IEC 61558-2-16		P

IEC 60335-2-29			
Clause	Requirement + Test	Result - Remark	Verdict
	Safety isolating transformers comply with IEC 61558-2-6		N/A
	If they have to be tested, they are tested according to Annex G		P
	The relevant standard for isolating transformers is IEC 61558-2-4 (IEC 60335-2-29:2016/AMD1:2019)		N/A
	If they have to be tested, they tested in accordance with Annex BB (IEC 60335-2-29:2016/AMD1:2019)		N/A
24.1.3	Switches comply with IEC 61058-1, the number of cycles of operation being at least 10 000		N/A
	If they have to be tested, they are tested according to Annex H		N/A
	If the switch operates a relay or contactor, the complete switching system is subjected to the test		N/A
	If the switch only operates a motor starting relay complying with IEC 60730-2-10 with the number of cycles of a least 10 000 as specified, the complete switching system need not be tested		N/A
24.1.4	Automatic controls comply with IEC 60730-1 with the relevant part 2. The number of cycles of operation being at least:		N/A
	- thermostats:	10 000	N/A
	- temperature limiters:	1 000	N/A
	- self-resetting thermal cut-outs:	300	N/A
	- voltage maintained non-self-resetting thermal cut-outs:	1 000	N/A
	- other non-self-resetting thermal cut-outs:	30	N/A
	- timers:	3 000	N/A
	- energy regulators:	10 000	N/A
	The number of cycles for controls operating during clause 11 need not be declared, if the appliance meets the requirements of this standard when they are short-circuited		N/A
	Thermal motor protectors are tested in combination with their motor under the conditions specified in Annex D		N/A
	For water valves containing live parts and that are incorporated in external hoses for connection of an appliance to the water mains, the degree of protection declared for subclause 6.5.2 of IEC 60730-2-8 is IPX7		N/A

IEC 60335-2-29			
Clause	Requirement + Test	Result - Remark	Verdict
	Thermal cut-outs of the capillary type comply with the requirements for type 2.K controls in IEC 60730-2-9		N/A
24.1.5	Appliance couplers comply with IEC 60320-1		N/A
	However, for class II appliances classified higher than IPX0, the appliance couplers comply with IEC 60320-2-3		N/A
	Interconnection couplers comply with IEC 60320-2-2		N/A
24.1.6	Small lamp holders similar to E10 lampholders comply with IEC 60238, the requirements for E10 lampholders being applicable		N/A
24.1.7	For remote operation of the appliance via a telecommunication network, the relevant standard for the telecommunication interface circuitry in the appliance is IEC 62151		N/A
24.1.8	The relevant standard for thermal links is IEC 60691		N/A
	Thermal links not complying with IEC 60691 are considered to be an intentionally weak part for the purposes of Clause 19		N/A
24.1.9	Contactors and relays, other than motor starting relays, tested as part of the appliance		N/A
	They are also tested in accordance with Clause 17 of IEC 60730-1, the number of cycles of operations in 24.1.4 selected according to the contactor or relay function in the appliance		N/A
24.2	Appliances not fitted with:		P
	- switches, automatic controls or power supplies in flexible cords		P
	- devices causing the protective device in the fixed wiring to operate in the event of a fault in the appliance		P
	- thermal cut-outs that can be reset by soldering, unless		P
	the solder has a melting point of at least 230 °C		N/A
24.3	Switches intended for all-pole disconnection of stationary appliances are directly connected to the supply terminals and have a contact separation in all poles, providing full disconnection under overvoltage category III conditions		N/A
24.4	Plugs and socket-outlets for extra-low voltage circuits and heating elements, not interchangeable with plugs and socket-outlets listed in IEC/TR 60083 or IEC 60906-1 or with connectors and appliance inlets complying with the standard sheets of IEC 60320-1		N/A

IEC 60335-2-29			
Clause	Requirement + Test	Result - Remark	Verdict
	The requirement also applicable to plugs, connectors, socket-outlets and appliance outlets in the battery charger output circuit (IEC 60335-2-29)		N/A
24.5	Capacitors in auxiliary windings of motors marked with their rated voltage and capacitance, and used accordingly		N/A
	Voltage across capacitors in series with a motor winding does not exceed 1,1 times rated voltage, when the appliance is supplied at 1,1 times rated voltage under minimum load		N/A
24.6	Working voltage of motors connected to the supply mains and having basic insulation that is inadequate for the rated voltage of the appliance, not exceeding 42 V		N/A
	In addition, the motors comply with the requirements of Annex I		N/A
24.7	Detachable hose-sets for connection of appliances to the water mains comply with IEC 61770		N/A
	They are supplied with the appliance		N/A
	Appliances intended to be permanently connected to the water mains not connected by a detachable hose-set		N/A
24.8	Motor running capacitors in appliances for which 30.2.3 is applicable and that are permanently connected in series with a motor winding, not causing a hazard in event of a failure		N/A
	One or more of the following conditions are to be met:		N/A
	- the capacitors are of class S2 or S3 according to IEC 60252-1		N/A
	- the capacitors are housed within a metallic or ceramic enclosure		N/A
	- the distance of separation of the outer surface to adjacent non-metallic parts exceeds 50 mm		N/A
	- adjacent non-metallic parts within 50 mm withstand the needle-flame test of Annex E		N/A
	- adjacent non-metallic parts within 50 mm classified as at least V-1 according to IEC 60695-11-10		N/A
25	SUPPLY CONNECTION AND EXTERNAL FLEXIBLE CORDS		P
25.1	Appliance not intended for permanent connection to fixed wiring, means for connection to the supply:		P
	- supply cord fitted with a plug, the current rating and voltage rating of the plug being not less than the corresponding ratings of its associated appliance		N/A

IEC 60335-2-29			
Clause	Requirement + Test	Result - Remark	Verdict
	- an appliance inlet having at least the same degree of protection against moisture as required for the appliance, or		P
	- pins for insertion into socket-outlets		N/A
25.2	Appliance not provided with more than one means of connection to the supply mains		P
	Stationary appliance for multiple supply may be provided with more than one means of connection, provided electric strength test of 1250 V for 1 min between each means of connection causes no breakdown		N/A
25.3	Appliance intended to be permanently connected to fixed wiring provided with one of the following means for connection to the supply mains:		N/A
	- a set of terminals allowing the connection of a flexible cord		N/A
	- a fitted supply cord		N/A
	- a set of supply leads accommodated in a suitable compartment		N/A
	- a set of terminals for the connection of cables of fixed wiring, cross-sectional areas specified in 26.6, and the appliance allows the connection of the supply conductors after the appliance has been fixed to its support		N/A
	- a set of terminals and cable entries, conduit entries, knock-outs or glands, allowing connection of appropriate types of cable or conduit, and the appliance allows the connection of the supply conductors after the appliance has been fixed to its support		N/A
	For a fixed appliance constructed so that parts can be removed to facilitate easy installation, this requirement is met if it is possible to connect the fixed wiring without difficulty after a part of the appliance has been fixed to its support		N/A
25.4	Cable and conduit entries, rated current of appliance not exceeding 16 A, dimension according to table 10 (mm):		N/A
	Introduction of conduit or cable does not reduce clearances or creepage distances below values specified in clause 29		N/A
25.5	Method for assembling the supply cord and output flexible cord for battery chargers having a rated output voltage exceeding 42,4 V to the appliance: (IEC 60335-2-29)		N/A
	- type X attachment		N/A
	- type Y attachment		N/A
	- type Z attachment, if allowed in relevant part 2		N/A

IEC 60335-2-29			
Clause	Requirement + Test	Result - Remark	Verdict
	Type X attachment, other than those with a specially prepared cord, not used for flat twin tinsel cords		N/A
	For multi-phase appliances supplied with a supply cord and that are intended to be permanently connected to fixed wiring, the supply cord is assembled to the appliance by type Y attachment		N/A
25.6	Plugs fitted with only one flexible cord		P
25.7	Supply cords and output flexible cord for battery chargers having a rated output voltage exceeding 42,4 V, other than for class III appliances, being one of the following types: (IEC 60335-2-29)		P
	- rubber sheathed (at least 60245 IEC 53)		N/A
	- polychloroprene sheathed (at least 60245 IEC 57)		N/A
	- polyvinyl chloride sheathed. Not used if they are likely to touch metal parts having a temperature rise exceeding 75 K during the test of clause 11		P
	- light polyvinyl chloride sheathed cord (60227 IEC 52), for appliances not exceeding 3 kg		P
	- ordinary polyvinyl chloride sheathed cord (60227 IEC 53), for other appliances		N/A
	- heat resistant polyvinyl chloride sheathed. Not used for type X attachment other than specially prepared cords		N/A
	- heat-resistant light polyvinyl chloride sheathed cord (60227 IEC 56), for appliances not exceeding 3 kg		N/A
	- heat-resistant polyvinyl chloride sheathed cord (60227 IEC 57), for other appliances		N/A
	- halogen-free, low smoke, thermoplastic insulated and sheathed		N/A
	- light duty halogen-free low smoke flexible cable (62821 IEC 101) for circular cable and (62821 IEC 101f) for flat cable		N/A
	- ordinary duty halogen-free low smoke flexible cable (62821 IEC 102) for circular cable and (62821 IEC 102f) for flat cable		N/A
	Supply cords for class III appliances adequately insulated		N/A
	Test with 500 V for 2 min for supply cords of class III appliances that contain live parts		N/A
	Battery chargers for charging vehicle batteries not fitted with natural rubber sheathed supply cords (IEC 60335-2-29)		N/A
	For battery chargers intended for use at low temperatures, the supply cord have properties not less than those specified for ordinary polychloroprene sheathed cords (code designation 60245 IEC 57) (IEC 60335-2-29)		N/A

IEC 60335-2-29			
Clause	Requirement + Test	Result - Remark	Verdict
25.8	Nominal cross-sectional area of supply cords and output flexible cord for battery chargers having a rated output voltage exceeding 42,4 V not less than table 11; rated current (A); cross-sectional area (mm ²) (IEC 60335-2-29)	Rated current: 2.5A; Cross-sectional area: 0.5mm ² or 0.75mm ²	N/A
25.9	Supply cords not in contact with sharp points or edges		P
25.10	Supply cord of class I appliances have a green/yellow core for earthing		N/A
	In multi-phase appliances, the colour of the neutral conductor of the supply cord is blue		N/A
	Where additional neutral conductors are provided in the supply cord:		N/A
	– other colours may be used for these additional neutral conductors;		N/A
	– all of the neutral conductors and line conductors are identified by marking using the alpha numeric notation specified in IEC 60445		N/A
	– the supply cord is fitted to the appliance		N/A
25.11	Conductors of supply cords not consolidated by soldering where they are subject to contact pressure, unless		N/A
	the contact pressure is provided by spring terminals		N/A
25.12	Insulation of the supply cord not damaged when moulding the cord to part of the enclosure		P
25.13	Inlet openings so constructed as to prevent damage to the supply cord		P
	If it is not evident that the supply cord can be introduced without risk of damage, a non-detachable lining or bushing complying with 29.3 for supplementary insulation provided		N/A
	If unsheathed supply cord, a similar additional bushing or lining is required, unless the appliance is		N/A
	class 0, or		N/A
	a class III appliance not containing live parts		N/A
25.14	Supply cords moved while in operation adequately protected against excessive flexing		N/A
	Flexing test, as described:		N/A
	- applied force (N)		N/A
	- number of flexings		N/A
	The test does not result in:		N/A
	- short-circuit between the conductors, such that the current exceeds a value of twice the rated current		N/A

IEC 60335-2-29			
Clause	Requirement + Test	Result - Remark	Verdict
	- breakage of more than 10% of the strands of any conductor		N/A
	- separation of the conductor from its terminal		N/A
	- loosening of any cord guard		N/A
	- damage to the cord or the cord guard		N/A
	- broken strands piercing the insulation and becoming accessible		N/A
25.15	For appliances with supply cord and appliances to be permanently connected to fixed wiring by a flexible cord and output flexible cord for battery chargers having a rated output voltage exceeding 42,4 V, conductors of the cord relieved from strain, twisting and abrasion by use of cord anchorage (IEC 60335-2-29)		N/A
	The cord cannot be pushed into the appliance to such an extent that the cord or internal parts of the appliance can be damaged		N/A
	Pull and torque test of cord:		N/A
	- fixed appliances: pull 100 N; torque (not on automatic cord reel) (Nm)		N/A
	- other appliances: values shown in table 12: mass (kg); pull (N); torque (not on automatic cord reel) (Nm)		N/A
	Cord not damaged and max. 2 mm displacement of the cord		N/A
25.16	Cord anchorages for type X attachments constructed and located so that:		N/A
	- replacement of the cord is easily possible		N/A
	- it is clear how the relief from strain and the prevention of twisting are obtained		N/A
	- they are suitable for different types of supply cord		N/A
	- cord cannot touch the clamping screws of cord anchorage if these screws are accessible, unless		N/A
	they are separated from accessible metal parts by supplementary insulation		N/A
	- the cord is not clamped by a metal screw which bears directly on the cord		N/A
	- at least one part of the cord anchorage securely fixed to the appliance, unless		N/A
	it is part of a specially prepared cord		N/A
	- screws which have to be operated when replacing the cord do not fix any other component, unless		N/A

IEC 60335-2-29			
Clause	Requirement + Test	Result - Remark	Verdict
	the appliance becomes inoperative or incomplete or the parts cannot be removed without a tool		N/A
	- if labyrinths can be bypassed the test of 25.15 is nevertheless withstood		N/A
	- for class 0, 0I and I appliances they are of insulating material or are provided with an insulating lining, unless		N/A
	failure of the insulation of the cord does not make accessible metal parts live		N/A
	- for class II appliances they are of insulating material, or		N/A
	if of metal, they are insulated from accessible metal parts by supplementary insulation		N/A
	After the test of 25.15, under the conditions specified, the conductors have not moved by more than 1 mm in the terminals		N/A
25.17	Adequate cord anchorages for type Y and Z attachment, test with the cord supplied with the appliance		N/A
25.18	Cord anchorages only accessible with the aid of a tool, or		N/A
	Constructed so that the cord can only be fitted with the aid of a tool		N/A
25.19	Type X attachment, glands not used as cord anchorage in portable appliances		N/A
	Tying the cord into a knot or tying the cord with string not used		N/A
25.20	The conductors of the supply cord for type Y and Z attachment insulated from accessible metal parts		N/A
25.21	Space for supply cord for type X attachment or for connection of fixed wiring constructed:		N/A
	- to permit checking of conductors with respect to correct positioning and connection before fitting any cover		N/A
	- so there is no risk of damage to the conductors or their insulation when fitting the cover		N/A
	- for portable appliances, so that the uninsulated end of a conductor, if it becomes free from the terminal, prevented from contact with accessible metal parts		N/A
	2 N test to the conductor for portable appliances; no contact with accessible metal parts		N/A
25.22	Appliance inlets:		P
	- live parts not accessible during insertion or removal		P

IEC 60335-2-29			
Clause	Requirement + Test	Result - Remark	Verdict
	Requirement not applicable to appliance inlets complying with IEC 60320-1		N/A
	- connector can be inserted without difficulty		P
	- the appliance is not supported by the connector		P
	- not for cold conditions if temp. rise of external metal parts exceeds 75 K during clause 11, unless		N/A
	the supply cord is unlikely to touch such metal parts		P
25.23	Interconnection cords comply with the requirements for the supply cord, except that:		N/A
	- the cross-sectional area of the conductors is determined on the basis of the maximum current during clause 11		N/A
	- the thickness of the insulation may be reduced		N/A
	- for class I or class II appliance with class III construction, the cross sectional areas of the conductors need not comply with 25.8 if specified conditions are met		N/A
	If necessary, electric strength test of 16.3		N/A
25.24	Interconnection cords not detachable without the aid of a tool if compliance with this standard is impaired when they are disconnected		N/A
25.25	Dimensions of pins that are inserted into socket-outlets compatible with the dimensions of the relevant socket-outlet.		N/A
	Dimensions of pins and engagement face in accordance with the dimensions of the relevant plug in IEC/TR 60083		N/A
26	TERMINALS FOR EXTERNAL CONDUCTORS		P
26.1	Appliances provided with terminals or equally effective devices for connection of external conductors		P
	Terminals only accessible after removal of a non-detachable cover, except		P
	for class III appliances that do not contain live parts		N/A
	Earthing terminals may be accessible if a tool is required to make the connections and means are provided to clamp the wire independently from its connection		N/A
26.2	Appliances with type X attachment and appliances for the connection of cables of fixed wiring provided with terminals in which connections are made by means of screws, nuts or similar devices, unless		N/A
	the connections are soldered		N/A

IEC 60335-2-29			
Clause	Requirement + Test	Result - Remark	Verdict
	Screws and nuts not used to fix any other component, except		N/A
	internal conductors, if so arranged that they are unlikely to be displaced when fitting the supply conductors		N/A
	If soldered connections used, the conductor so positioned or fixed that reliance is not placed on soldering alone, unless		N/A
	barriers provided so that neither clearances nor creepage distances between live parts and other metal parts reduced below the values for supplementary insulation if the conductor becomes free at the soldered joint		N/A
26.3	Terminals for type X attachment and for connection of cables of fixed wiring so constructed that the conductor is clamped between metal surfaces with sufficient contact pressure but without damaging the conductor		N/A
	Terminals fixed so that when the clamping means is tightened or loosened:		N/A
	- the terminal does not become loose		N/A
	- internal wiring is not subjected to stress		N/A
	- neither clearances nor creepage distances are reduced below the values in clause 29		N/A
	Compliance checked by inspection and by the test of subclause 9.6 of IEC 60999-1, the torque applied being equal to two-thirds of the torque specified (Nm)		N/A
	No deep or sharp indentations of the conductors		N/A
26.4	Terminals for type X attachment, except those having a specially prepared cord and those for the connection of cables of fixed wiring, no special preparation of conductors such as by soldering, use of cable lugs, eyelets or similar, and		N/A
	so constructed or placed that conductors prevented from slipping out when clamping screws or nuts are tightened		N/A
26.5	Terminals for type X attachment so located or shielded that if a wire of a stranded conductor escapes, no risk of accidental connection to other parts that result in a hazard		N/A
	Stranded conductor test, 8 mm insulation removed		N/A
	No contact between live parts and accessible metal parts and,		N/A

IEC 60335-2-29			
Clause	Requirement + Test	Result - Remark	Verdict
	for class II constructions, between live parts and metal parts separated from accessible metal parts by supplementary insulation only		N/A
	Requirement not apply to the terminals of the output circuit having a no-load voltage not exceeding 42,4 V (IEC 60335-2-29)		N/A
26.6	Terminals for type X attachment and for connection of cables of fixed wiring suitable for connection of conductors with cross-sectional area according to table 13; rated current (A); nominal cross-sectional area (mm ²)		N/A
	If a specially prepared cord is used, terminals need only be suitable for that cord		N/A
26.7	Terminals for type X attachment, except in class III appliances not containing live parts, accessible after removal of a cover or part of the enclosure		N/A
26.8	Terminals for the connection of fixed wiring, including the earthing terminal, located close to each other		N/A
26.9	Terminals of the pillar type constructed and located as specified		N/A
26.10	Terminals with screw clamping and screwless terminals not used for flat twin tinsel cords, unless		P
	conductors ends fitted with means suitable for screw terminals		N/A
	Pull test of 5 N to the connection		P
26.11	For type Y and Z attachment, soldered, welded, crimped or similar connections may be used		P
	For Class II appliances, the conductor so positioned or fixed that reliance is not placed on soldering, welding or crimping alone	Output wire is double fixed by soldering and glue	P
	If soldering, welding or crimping alone used, barriers provided so that clearances and creepage distances between live parts and other metal parts are not reduced below the values for supplementary insulation if the conductor becomes free		N/A
27	PROVISION FOR EARTHING		P
27.1	Accessible metal parts of Class 0I and I appliances permanently and reliably connected to an earthing terminal or earthing contact of the appliance inlet		N/A
	Earthing terminals and earthing contacts not connected to the neutral terminal		N/A
	Class 0, II and III appliances have no provision for protective earthing	Class II appliance.	P
	Class II appliances and class III appliances can incorporate an earth for functional purposes		N/A

IEC 60335-2-29			
Clause	Requirement + Test	Result - Remark	Verdict
	Safety extra-low voltage circuits not earthed, unless		P
	protective extra-low voltage circuits		N/A
27.2	Clamping means of earthing terminals adequately secured against accidental loosening		N/A
	Terminals for the connection of external equipotential bonding conductors allow connection of conductors of 2,5 to 6 mm ² , and		N/A
	- do not provide earthing continuity between different parts of the appliance, and		N/A
	- conductors cannot be loosened without the aid of a tool		N/A
	Requirements not applicable to class II appliances and class III appliances that incorporate an earth for functional purposes		N/A
27.3	For a detachable part having an earth connection and being plugged into another part of the appliance, the earth connection is made before and separated after current-carrying connections when removing the part		N/A
	For appliances with supply cords, current-carrying conductors become taut before earthing conductor, if the cord slips out of the cord anchorage		N/A
	Requirements not applicable to class II appliances and class III appliances that incorporate an earth for functional purposes		N/A
27.4	No risk of corrosion resulting from contact between parts of the earthing terminal and the copper of the earthing conductor or other metal		N/A
	Parts providing earthing continuity, other than parts of a metal frame or enclosure, have adequate resistance to corrosion		N/A
	If of steel, these parts provided with an electroplated coating with a thickness at least 5 µm		N/A
	Adequate protection against rusting of parts of coated or uncoated steel, only intended to provide or transmit contact pressure		N/A
	In the body of the earthing terminal is a part of a frame or enclosure of aluminium or aluminium alloys, precautions taken to avoid risk of corrosion		N/A
	Requirements not applicable to class II appliances and class III appliances that incorporate an earth for functional purposes		N/A
27.5	Low resistance of connection between earthing terminal and earthed metal parts		N/A

IEC 60335-2-29			
Clause	Requirement + Test	Result - Remark	Verdict
	This requirement does not apply to connections providing earthing continuity in the protective extra-low voltage circuit, provided the clearances of basic insulation are based on the rated voltage of the appliance		N/A
	Requirements not applicable to class II appliances and class III appliances that incorporate an earth for functional purposes		N/A
	Resistance not exceeding 0,1 Ω at the specified low-resistance test (Ω).....:		N/A
27.6	The printed conductors of printed circuit boards not used to provide earthing continuity in hand-held appliances.		N/A
	They may be used to provide earthing continuity in other appliances if at least two tracks are used with independent soldering points and the appliance complies with 27.5 for each circuit		N/A
	Requirements not applicable to class II appliances and class III appliances that incorporate an earth for functional purposes		N/A
28	SCREWS AND CONNECTIONS		N/A
28.1	Fixings, electrical connections and connections providing earthing continuity withstand mechanical stresses		N/A
	Screws not of soft metal liable to creep, such as zinc or aluminium		N/A
	Diameter of screws of insulating material min. 3 mm		N/A
	Screws of insulating material not used for any electrical connections or connections providing earthing continuity		N/A
	Screws used for electrical connections or connections providing earthing continuity screwed into metal		N/A
	Screws not of insulating material if their replacement by a metal screw can impair supplementary or reinforced insulation		N/A
	For type X attachment, screws to be removed for replacement of supply cord or for user maintenance, not of insulating material if their replacement by a metal screw impairs basic insulation		N/A
	For screws and nuts; torque-test as specified in table 14		N/A
28.2	Electrical connections and connections providing earthing continuity constructed so that contact pressure is not transmitted through non-ceramic insulating material liable to shrink or distort, unless		N/A

IEC 60335-2-29			
Clause	Requirement + Test	Result - Remark	Verdict
	there is resiliency in the metallic parts to compensate for shrinkage or distortion of the insulating material		N/A
	This requirement does not apply to electrical connections in circuits of appliances for which:		N/A
	<ul style="list-style-type: none"> 30.2.2 is applicable and that carry a current not exceeding 0,5 A 		N/A
	<ul style="list-style-type: none"> 30.2.3 is applicable and that carry a current not exceeding 0,2 A 		N/A
28.3	Space-threaded (sheet metal) screws only used for electrical connections if they clamp the parts together		N/A
	Thread-cutting (self-tapping) screws and thread rolling screws only used for electrical connections if they generate a full form standard machine screw thread		N/A
	Thread-cutting (self-tapping) screws not used if they are likely to be operated by the user or installer		N/A
	Thread-cutting, thread rolling and space threaded screws may be used in connections providing earthing continuity provided it is not necessary to disturb the connection:		N/A
	- in normal use,		N/A
	- during user maintenance,		N/A
	- when replacing a supply cord having a type X attachment, or		N/A
	- during installation		N/A
	At least two screws being used for each connection providing earthing continuity, unless		N/A
	the screw forms a thread having a length of at least half the diameter of the screw		N/A
28.4	Screws and nuts that make mechanical connection secured against loosening if they also make electrical connections or connections providing earthing continuity		N/A
	This requirement does not apply to screws in the earthing circuit if at least two screws are used, or		N/A
	if an alternative earthing circuit is provided		N/A
	Rivets for electrical connections or connections providing earthing continuity secured against loosening if the connections are subjected to torsion		N/A
29	CLEARANCES, CREEPAGE DISTANCES AND SOLID INSULATION		P
	Clearances, creepage distances and solid insulation withstand electrical stress		P

IEC 60335-2-29			
Clause	Requirement + Test	Result - Remark	Verdict
	For coatings used on printed circuits boards to protect the microenvironment (Type 1) or to provide basic insulation (Type 2), Annex J applies		N/A
	The microenvironment is pollution degree 1 under type 1 protection		N/A
	For type 2 protection, the spacing between the conductors before the protection is applied is not less than the values specified in Table 1 of IEC 60664-3		N/A
	These values apply to functional, basic, supplementary and reinforced insulation		P
29.1	Clearances not less than the values specified in table 16, taking into account the rated impulse voltage for the overvoltage categories of table 15, unless	(see appended table)	P
	for basic insulation and functional insulation they comply with the impulse voltage test of clause 14		N/A
	However, if the distances are affected by wear, distortion, movement of the parts or during assembly, the clearances for rated impulse voltages of 1500V and above are increased by 0,5 mm and the impulse voltage test is not applicable		N/A
	For appliances intended for use at altitudes exceeding 2 000 m, the clearances in Table 16 is increased according to the relevant multiplier values in Table A.2 of IEC 60664-1		N/A
	Impulse voltage test is not applicable:		N/A
	- when the microenvironment is pollution degree 3, or		N/A
	- for basic insulation of class 0 and class 01 appliances, or		N/A
	- to appliances intended for use at altitudes exceeding 2 000 m		N/A
	Appliances are in overvoltage category II		P
	A force of 2 N is applied to bare conductors, other than heating elements		P
	A force of 30 N is applied to accessible surfaces		P
29.1.1	Clearances of basic insulation withstand the overvoltages, taking into account the rated impulse voltage		P
	The values of table 16 or the impulse voltage test of clause 14 are applicable	(see appended table)	P
	Clearance at the terminals of tubular sheathed heating elements may be reduced to 1,0 mm if the microenvironment is pollution degree 1		N/A
	Lacquered conductors of windings considered to be bare conductors		P

IEC 60335-2-29			
Clause	Requirement + Test	Result - Remark	Verdict
29.1.2	Clearances of supplementary insulation not less than those specified for basic insulation in table 16	(see appended table)	P
29.1.3	Clearances of reinforced insulation not less than those specified for basic insulation in table 16, using the next higher step for rated impulse voltage.....	(see appended table)	P
	For double insulation, with no intermediate conductive part between basic and supplementary insulation, clearances are measured between live parts and the accessible surface, and the insulation system is treated as reinforced insulation		P
29.1.4	Clearances for functional insulation are the largest values determined from:		P
	- table 16 based on the rated impulse voltage.....	(see appended table)	P
	- table F.7a in IEC 60664-1, frequency not exceeding 30 kHz		N/A
	- clause 4 of IEC 60664-4, frequency exceeding 30 kHz		N/A
	If values of table 16 are largest, the impulse voltage test of clause 14 may be applied instead, unless		N/A
	the microenvironment is pollution degree 3, or		N/A
	the distances can be affected by wear, distortion, movement of the parts or during assembly		N/A
	However, clearances are not specified if the appliance complies with clause 19 with the functional insulation short-circuited		P
	Lacquered conductors of windings considered to be bare conductors		P
	However, clearances at crossover points are not measured		P
	Clearance between surfaces of PTC heating elements may be reduced to 1mm		N/A
29.1.5	Appliances having higher working voltages than rated voltage, clearances for basic insulation are the largest values determined from:		N/A
	- table 16 based on the rated impulse voltage.....		N/A
	- table F.7a in IEC 60664-1, frequency not exceeding 30 kHz		N/A
	- clause 4 of IEC 60664-4, frequency exceeding 30 kHz		N/A
	If clearances for basic insulation are selected from Table F.7a of IEC 60664-1 or Clause 4 of IEC 60664-4, the clearances of supplementary insulation are not less than those specified for basic insulation		N/A

IEC 60335-2-29			
Clause	Requirement + Test	Result - Remark	Verdict
	If clearances for basic insulation are selected from Table F.7a of IEC 60664-1, the clearances of reinforced insulation dimensioned as specified in Table F.7a are to withstand 160% of the withstand voltage required for basic insulation		N/A
	If clearances for basic insulation are selected from Clause 4 of IEC 60664-4, the clearances of reinforced insulation are twice the value required for basic insulation		N/A
	If the secondary winding of a step-down transformer is earthed, or if there is an earthed screen between the primary and secondary windings, clearances of basic insulation on the secondary side not less than those specified in table 16, but using the next lower step for rated impulse voltage		N/A
	Circuits supplied with a voltage lower than rated voltage, clearances of functional insulation are based on the working voltage used as the rated voltage in table 15		N/A
29.2	Creepage distances not less than those appropriate for the working voltage, taking into account the material group and the pollution degree	(see appended table)	P
	Pollution degree 2 applies, unless		P
	- precautions taken to protect the insulation; pollution degree 1		N/A
	- insulation subjected to conductive pollution; pollution degree 3		N/A
	- battery chargers for outdoor use, the microenvironment is pollution degree 3 unless the insulation is enclosed or located so that it is unlikely to be exposed to pollution during normal use of the appliance (IEC 60335-2-29)		N/A
	A force of 2 N is applied to bare conductors, other than heating elements		P
	A force of 30 N is applied to accessible surfaces		P
	In a double insulation system, the working voltage for both the basic and supplementary insulation is taken as the working voltage across the complete double insulation system		N/A
29.2.1	Creepage distances of basic insulation not less than specified in table 17	(see appended table)	P
	However, if the working voltage is periodic and has a frequency exceeding 30 kHz, the creepage distances are also determined from table 2 of IEC 60664-4, these values being used if exceeding the values in table 17		N/A

IEC 60335-2-29			
Clause	Requirement + Test	Result - Remark	Verdict
	Except for pollution degree 1, corresponding creepage distance not less than the minimum specified for the clearance in table 16, if the clearance has been checked according to the test of clause 14.....:		N/A
29.2.2	Creepage distances of supplementary insulation at least those specified for basic insulation in table 17, or	(see appended table)	P
	Table 2 of IEC 60664-4, as applicable.....:		N/A
29.2.3	Creepage distances of reinforced insulation at least double those specified for basic insulation in table 17, or	(see appended table)	P
	Table 2 of IEC 60664-4, as applicable.....:		N/A
29.2.4	Creepage distances of functional insulation not less than specified in table 18	(see appended table)	P
	However, if the working voltage is periodic and has a frequency exceeding 30 kHz, the creepage distances are also determined from table 2 of IEC 60664-4, these values being used if exceeding the values in table 18		N/A
	Creepage distances may be reduced if the appliance complies with clause 19 with the functional insulation short-circuited		N/A
29.3	Supplementary and reinforced insulation have adequate thickness, or a sufficient number of layers, to withstand the electrical stresses		P
	Compliance checked:		P
	- by measurement, in accordance with 29.3.1, or		P
	- by an electric strength test in accordance with 29.3.2, or		P
	- for insulation, other than single layer internal wiring insulation, by an assessment of the thermal quality of the material combined with an electric strength test, in accordance with 29.3.3, and		N/A
	for accessible parts of reinforced insulation consisting of a single layer, by measurement in accordance with 29.3.4, or		N/A
	- by an assessment of the thermal quality of the material according to 29.3.3 combined with an electric strength test in accordance with 23.5, for each single layer internal wiring insulation touching each other, or		N/A
	- as specified in subclause 6.3 of IEC 60664-4 for insulation that is subjected to any periodic voltage having a frequency exceeding 30 kHz		N/A

IEC 60335-2-29			
Clause	Requirement + Test	Result - Remark	Verdict
29.3.1	Supplementary insulation have a thickness of at least 1 mm		P
	Reinforced insulation have a thickness of at least 2 mm	Enclosure: min. 2.0mm thickness	P
29.3.2	Each layer of material withstand the electric strength test of 16.3 for supplementary insulation		P
	Supplementary insulation consist of at least 2 layers		P
	Reinforced insulation consist of at least 3 layers		P
29.3.3	The insulation is subjected to the dry heat test Bb of IEC 60068-2-2, followed by		N/A
	the electric strength test of 16.3		N/A
	If the temperature rise during the tests of clause 19 does not exceed the value specified in table 3, the test of IEC 60068-2-2 is not carried out		N/A
29.3.4	Thickness of accessible parts of reinforced insulation consisting of a single layer not less than specified in table 19	Enclosure: min. 2.0mm thickness	P
30	RESISTANCE TO HEAT AND FIRE		P
30.1	External parts of non-metallic material,		N/A
	parts supporting live parts, and	Enclosure	P
	parts of thermoplastic material providing supplementary or reinforced insulation	Transformer bobbin, PCB, enclosure	P
	sufficiently resistant to heat		P
	Ball-pressure test according to IEC 60695-10-2		P
	External parts tested at 40 °C plus the maximum temperature rise determined during the test of clause 11, or at 75 °C, whichever is the higher; temperature (°C).....:	(see appended table 30.1)	P
	Parts supporting live parts tested at 40°C plus the maximum temperature rise determined during the test of clause 11, or at 125 °C, whichever is the higher; temperature (°C).....:	(see appended table 30.1)	P
	Parts of thermoplastic material providing supplementary or reinforced insulation tested at 25 °C plus the maximum temperature rise determined during clause 19, if higher; temperature (°C).....:	(see appended table 30.1)	P
30.2	Parts of non-metallic material resistant to ignition and spread of fire		P
	This requirement does not apply to:		N/A

IEC 60335-2-29			
Clause	Requirement + Test	Result - Remark	Verdict
	parts having a mass not exceeding 0,5 g, provided the cumulative effect is unlikely to propagate flames that originate inside the appliance by propagating flames from one part to another, or		N/A
	decorative trims, knobs and other parts unlikely to be ignited or to propagate flames that originate inside the appliance		N/A
	Compliance checked by the test of 30.2.1, and in addition:		P
	- for attended appliances, 30.2.2 applies		N/A
	- for unattended appliances, 30.2.3 applies		P
	For appliances for remote operation, 30.2.3 applies		N/A
	For base material of printed circuit boards, 30.2.4 applies		P
30.2.1	Parts of non-metallic material subjected to the glow-wire test of IEC 60695-2-11 at 550°C	(see appended table 30.2)	P
	However, test not carried out if the material is classified as having a glow-wire flammability index according to IEC 60695-2-12 of at least 550 °C, or		N/A
	the material is classified at least HB40 according to IEC 60695-11-10		N/A
	Parts for which the glow-wire test cannot be carried out need to meet the requirements in ISO 9772 for material classified HBF		N/A
30.2.2	Appliances operated while attended, parts of non-metallic material supporting current-carrying connections, and		N/A
	parts of non-metallic material within a distance of 3mm of such connections,		N/A
	subjected to the glow-wire test of IEC 60695-2-11 with appropriate severity level:		N/A
	- 750 °C, for connections carrying a current exceeding 0,5 A during normal operation		N/A
	- 650 °C, for other connections		N/A
	Glow-wire applied to an interposed shielding material, if relevant		N/A
	The glow-wire test not carried out on parts of material classified as having a glow-wire flammability index according to IEC 60695-2-12 of at least:		N/A
	- 750 °C, for connections carrying a current exceeding 0,5 A during normal operation		N/A
	- 650 °C, for other connections		N/A
	The glow-wire test is also not carried out on small parts. These parts are to:		N/A

IEC 60335-2-29			
Clause	Requirement + Test	Result - Remark	Verdict
	- comprise material having a glow-wire flammability index of at least 750 °C, or 650 °C as appropriate, or		N/A
	- comply with the needle-flame test of Annex E, or	(see appended table 30.2/30.2.4)	N/A
	- comprise material classified as V-0 or V-1 according to IEC 60695-11-10.....:		N/A
	Glow-wire test not applicable to conditions as specified:		N/A
30.2.3	Appliances operated while unattended, tested as specified in 30.2.3.1 and 30.2.3.2		P
	The tests are not applicable to conditions as specified:		N/A
30.2.3.1	Parts of non-metallic material supporting connections carrying a current exceeding 0,2 A during normal operation, and	T1 bobbin, plastic material of output connector	P
	parts of non-metallic material, other than small parts, within a distance of 3 mm,		N/A
	subjected to the glow-wire test of IEC 60695-2-11 with a test severity of 850 °C	(see appended table 30.2)	P
	Glow-wire applied to an interposed shielding material, if relevant		N/A
	The glow-wire test is not carried out on parts of material classified as having a glow-wire flammability index according to IEC 60695-2-12 of at least 850 °C		N/A
30.2.3.2	Parts of non-metallic material supporting connections, and		P
	parts of non-metallic material within a distance of 3mm,		N/A
	subjected to the glow-wire test of IEC 60695-2-11 with appropriate severity level:	(see appended table 30.2)	P
	- 750 °C, for connections carrying a current exceeding 0,2 A during normal operation		P
	- 650 °C, for other connections		P
	Glow-wire applied to an interposed shielding material, if relevant		N/A
	However, the glow-wire test of 750 °C or 650 °C as appropriate, is not carried out on parts of material fulfilling both or either of the following classifications:		N/A
	- a glow-wire ignition temperature according to IEC 60695-2-13 of at least:		N/A
	- 775 °C, for connections carrying a current exceeding 0,2 A during normal operation		N/A
	- 675 °C, for other connections		N/A

IEC 60335-2-29			
Clause	Requirement + Test	Result - Remark	Verdict
	- a glow-wire flammability index according to IEC 60695-2-12 of at least:		N/A
	- 750 °C, for connections carrying a current exceeding 0,2 A during normal operation		N/A
	- 650 °C, for other connections		N/A
	The glow-wire test is also not carried out on small parts. These parts are to:		N/A
	- comprise material having a glow-wire ignition temperature of at least 775 °C or 675 °C as appropriate, or		N/A
	- comprise material having a glow-wire flammability index of at least 750 °C or 650 °C as appropriate, or		N/A
	- comply with the needle-flame test of Annex E, or		N/A
	- comprise material classified as V-0 or V-1 according to IEC 60695-11-10		N/A
	The consequential needle-flame test of Annex E applied to non-metallic parts that encroach within the vertical cylinder placed above the centre of the connection zone and on top of the non-metallic parts supporting current-carrying connections, and parts of non-metallic material within a distance of 3 mm of such connections if these parts are those:		N/A
	- parts that withstood the glow-wire test of IEC 60695-2-11 of 750 °C or 650 °C as appropriate, but produce a flame that persist longer than 2 s, or		N/A
	- parts that comprised material having a glow-wire flammability index of at least 750 °C or 650 °C as appropriate, or		N/A
	- small parts, that comprised material having a glow-wire flammability index of at least 750 °C or 650 °C as appropriate, or		N/A
	- small parts for which the needle-flame test of Annex E was applied, or		N/A
	- small parts for which a material classification of V-0 or V-1 was applied		N/A
	However, the consequential needle-flame test is not carried out on non-metallic parts, including small parts, within the cylinder that are:		N/A
	- parts having a glow-wire ignition temperature of at least 775 °C or 675 °C as appropriate, or		N/A
	- parts comprising material classified as V-0 or V-1 according to IEC 60695-11-10, or		N/A
	- parts shielded by a flame barrier that meets the needle-flame test of Annex E or that comprises material classified as V-0 or V-1 according to IEC 60695-11-10		N/A
30.2.4	Base material of printed circuit boards subjected to the needle-flame test of Annex E	(see appended table 30.2/30.2.4)	P

IEC 60335-2-29			
Clause	Requirement + Test	Result - Remark	Verdict
	Test not applicable to conditions as specified	PCB: V-0	P
31	RESISTANCE TO RUSTING		P
	Relevant ferrous parts adequately protected against rusting		P
	Tests specified in part 2 when necessary		N/A
32	RADIATION, TOXICITY AND SIMILAR HAZARDS		P
	Appliance does not emit harmful radiation or present a toxic or similar hazard due to their operation in normal use		P
	Compliance is checked by the limits or tests specified in part 2, if relevant		N/A
A	ANNEX A (INFORMATIVE) ROUTINE TESTS		P
A.2	Electric strength test (IEC 60335-2-29):		P
	An electric strength test is carried out between the input and output circuits, the test voltage being:		P
	- 2 000 V, for battery chargers having a rated voltage not exceeding 150 V		N/A
	- 2 500 V, for other battery chargers		P
B	ANNEX B (NORMATIVE) APPLIANCES POWERED BY RECHARGEABLE BATTERIES THAT ARE RECHARGED IN THE APPLIANCE		N/A
	The following modifications to this standard are applicable for appliances powered by batteries that are recharged in the appliance		N/A
	Three forms of construction covered:		N/A
	a) Appliance supplied directly from the supply mains or a renewable energy source, the battery charging circuitry and other supply unit circuitry incorporated within the appliance		N/A
	b) The part of the appliance incorporating the battery is supplied from the supply mains or a renewable energy source, via a detachable supply unit. The battery charging circuitry is incorporated within the part of the appliance containing the battery		N/A
	c) The part of the appliance incorporating the battery is supplied from the supply mains or a renewable energy source, via a detachable supply unit. The battery charging circuitry is incorporated within the detachable supply unit		N/A
3.1.9	Appliance operated under the following conditions:		N/A
	- the appliance, supplied by its fully charged battery, operated as specified in relevant part 2		N/A

IEC 60335-2-29			
Clause	Requirement + Test	Result - Remark	Verdict
	- the battery is charged, the battery being initially discharged to such an extent that the appliance cannot operate		N/A
	-if possible, the appliance is supplied from the supply mains through its battery charger, the battery being initially discharged to such an extent that the appliance cannot operate. The appliance is operated as specified in relevant part 2		N/A
	- if the appliance incorporates inductive coupling between two parts that are detachable from each other, the appliance is supplied from the supply mains with the detachable part removed		N/A
3.6.2	Part to be removed in order to discard the battery is not considered to be detachable		N/A
5.B.101	Appliances supplied from the supply mains tested as specified for motor-operated appliances		N/A
7.1	Battery compartment for batteries intended to be replaced by the user, marked with battery voltage (V) and polarity of the terminals.....:		N/A
	The positive terminal indicated by symbol IEC 60417-5005 and the negative terminal by symbol IEC 60417-5006		N/A
	Appliances intending to be supplied from a detachable supply unit marked with symbol IEC 60417-6181 and its type reference along with symbol ISO 7000-0790 (2004-01), or		N/A
	use only with <model designation> supply unit		N/A
7.6	Additional symbols		N/A
7.12	The instructions give information regarding charging		N/A
	Instructions for appliances incorporating batteries intended to be replaced by the user include required information		N/A
	Instructions for appliances containing non user-replaceable batteries state the substance of the following:		N/A
	This appliance contains batteries that are only replaceable by skilled persons		N/A
	Instructions for appliances containing non-replaceable batteries shall state the substance of the following:		N/A
	This appliance contains batteries that are non-replaceable		N/A
	For appliances intending to be supplied from a detachable supply unit for the purposes of recharging the battery, the type reference of the detachable supply unit is stated along with the following:		N/A

IEC 60335-2-29			
Clause	Requirement + Test	Result - Remark	Verdict
	WARNING: For the purposes of recharging the battery, only use the detachable supply unit provided with this appliance		N/A
	If the symbol for detachable supply unit is used, its meaning is explained		N/A
7.15	Markings placed on the part of the appliance connected to the supply mains		N/A
	The type reference of the detachable supply unit is placed in close proximity to the symbol		N/A
8.2	Appliances having batteries that according to the instruction may be replaced by the user need only have basic insulation between live parts and the inner surface of the battery compartment		N/A
	If the appliance can be operated without batteries, double or reinforced insulation required		N/A
11.7	The battery is charged for the period stated in the instructions or 24 h.....:		N/A
11.8	Temperature rise of the battery surface does not exceed the limit in the battery manufacturer's specification; measured (K); limit (K)		N/A
	If no limit specified, the temperature rise does not exceed 20 K; measured (K)		N/A
19.1	Appliances subjected to tests of 19.B.101, 19.B.102 and 19.B.103		N/A
19.10	Not applicable		N/A
19.B.101	Appliances supplied at rated voltage for 168 h, the battery being continually charged		N/A
19.B.102	For appliances having batteries that can be removed without the aid of a tool, short-circuit of the terminals of the battery, the battery being fully charged,		N/A
19.B.103	Appliances having batteries replaceable by the user supplied at rated voltage under normal operation with the battery removed or in any position allowed by the construction		N/A
19.13	The battery does not rupture or ignite		N/A
21.B.101	Appliances having pins for insertion into socket-outlets have adequate mechanical strength		N/A
	Part of the appliance incorporating the pins subjected to the free fall test, procedure 2, of IEC 60068-2-31, the number of falls being:		N/A
	- 100, if the mass of the part does not exceed 250 g (g):		N/A
	- 50, if the mass of the part exceeds 250 g		N/A
	After the test, the requirements of 8.1, 15.1.1, 16.3 and clause 29 are met		N/A

IEC 60335-2-29			
Clause	Requirement + Test	Result - Remark	Verdict
22.3	Appliances having pins for insertion into socket-outlets tested as fully assembled as possible		N/A
25.13	An additional lining or bushing not required for interconnection cords in class III appliances or class III constructions operating at safety extra-low voltage not containing live parts		N/A
30.2	For parts of the appliance connected to the supply mains during the charging period, 30.2.3 applies		N/A
	For other parts, 30.2.2 applies		N/A
C	ANNEX C (NORMATIVE) AGEING TEST ON MOTORS		N/A
	Tests, as described, carried out when doubt with regard to the temperature classification of the insulation of a motor winding		N/A
	Test conditions as specified		N/A
D	ANNEX D (NORMATIVE) THERMAL MOTOR PROTECTORS		N/A
	Applicable to appliances having motors that incorporate thermal motor protectors necessary for compliance with the standard		N/A
	Test conditions as specified		N/A
E	ANNEX E (NORMATIVE) NEEDLE-FLAME TEST		P
	Needle-flame test carried out in accordance with IEC 60695-11-5, with the following modifications:		P
7	Severities		P
	The duration of application of the test flame is 30 s ± 1 s		P
9	Test procedure		P
9.1	The specimen so arranged that the flame can be applied to a vertical or horizontal edge as shown in the examples of Figure 1		P
9.2	The first paragraph does not apply		P
	If possible, the flame is applied at least 10 mm from a corner		P
9.3	The test is carried out on one specimen		P
	If the specimen does not withstand the test, the test may be repeated on two additional specimens, both withstanding the test		N/A
11	Evaluation of test results		P
	The duration of burning not exceeding 30 s		P

IEC 60335-2-29			
Clause	Requirement + Test	Result - Remark	Verdict
	However, for printed circuit boards, the duration of burning not exceeding 15 s		P
F	ANNEX F (NORMATIVE) CAPACITORS		N/A
	Capacitors likely to be permanently subjected to the supply voltage, and used for radio interference suppression or voltage dividing, comply with the following clauses of IEC 60384-14, with the following modifications:		N/A
1.5	Terms and definitions		N/A
1.5.3	Class X capacitors tested according to subclass X2		N/A
1.5.4	This subclause is applicable		N/A
1.6	Marking		N/A
	Items a) and b) are applicable		N/A
3.4	Approval testing		N/A
3.4.3.2	Table 3 is applicable as described		N/A
4.1	Visual examination and check of dimensions		N/A
	This subclause is applicable		N/A
4.2	Electrical tests		N/A
4.2.1	This subclause is applicable		N/A
4.2.5	This subclause is applicable		N/A
4.2.5.2	Only table 11 is applicable		N/A
	Values for test A apply		N/A
	However, for capacitors in heating appliances the values for test B or C apply		N/A
4.12	Damp heat, steady state		N/A
	This subclause is applicable		N/A
	Only insulation resistance and voltage proof are checked		N/A
4.13	Impulse voltage		N/A
	This subclause is applicable		N/A
4.14	Endurance		N/A
	Subclauses 4.14.1, 4.14.3, 4.14.4 and 4.14.7 are applicable		N/A
4.14.7	Only insulation resistance and voltage proof are checked		N/A
	No visible damage		N/A
4.17	Passive flammability test		N/A
	This subclause is applicable		N/A
4.18	Active flammability test		N/A

IEC 60335-2-29			
Clause	Requirement + Test	Result - Remark	Verdict
	This subclause is applicable		N/A
G	ANNEX G (NORMATIVE) SAFETY ISOLATING TRANSFORMERS		P
	The following modifications to this standard are applicable for safety isolating transformers:		P
7	Marking and instructions		P
7.1	Transformers for specific use marked with:		P
	-name, trademark or identification mark of the manufacturer or responsible vendor		P
	-model or type reference.....		P
17	Overload protection of transformers and associated circuits		P
	Fail-safe transformers comply with subclause 15.5 of IEC 61558-1		N/A
22	Construction		P
	Subclauses 19.1 and 19.1.2 of IEC 61558-2-6 are applicable		P
29	Clearances, creepage distances and solid insulation		P
29.1, 29.2, 29.3	The distances specified in items 2a, 2c and 3 in table 13 of IEC 61558-1 apply		P
	For insulated winding wires complying with subclause 19.12.3 of IEC 61558-1 there are no requirements for clearances or creepage distances		N/A
	For windings providing reinforced insulation, the distance specified in item 2c of table 13 of IEC 61558-1 is not assessed		N/A
	For safety isolating transformers subjected to periodic voltages with a frequency exceeding 30 kHz, the clearances, creepage distances and solid insulation values specified in IEC 60664-4 are applicable, if greater than the values specified in items 2a, 2c and 3 in table 13 of IEC 61558-1		N/A
H	ANNEX H (NORMATIVE) SWITCHES		N/A
	Switches comply with the following clauses of IEC 61058-1, as modified below:		N/A
	The tests of IEC 61058-1 carried out under the conditions occurring in the appliance		N/A
	Before being tested, switches are operated 20 times without load		N/A
8	Marking and documentation		N/A
	Switches are not required to be marked		N/A

IEC 60335-2-29			
Clause	Requirement + Test	Result - Remark	Verdict
	However, a switch that can be tested separately from the appliance marked with the manufacturer's name or trade mark and the type reference		N/A
13	Mechanism		N/A
	The tests may be carried out on a separate sample		N/A
15	Insulation resistance and dielectric strength		N/A
15.1	Not applicable		N/A
15.2	Not applicable		N/A
15.3	Applicable for full disconnection and micro-disconnection		N/A
17	Endurance		N/A
	Compliance is checked on three separate appliances or switches		N/A
	For 17.2.4.4, the number of cycles declared according to 7.1.4 is 10 000, unless		N/A
	otherwise specified in 24.1.3 of the relevant part 2 of IEC 60335		N/A
	Switches for operation under no load and which can be operated only by a tool, and		N/A
	switches operated by hand that are interlocked so that they cannot be operated under load,		N/A
	are not subjected to the tests		N/A
	However, switches without this interlock are subjected to the test of 17.2.4.4 for 100 cycles of operation		N/A
	Subclauses 17.2.2 and 17.2.5.2 not applicable		N/A
	The ambient temperature during the test is that occurring in the appliance during the test of Clause 11 in IEC 60335-1		N/A
	The temperature rise of the terminals not more than 30 K above the temperature rise measured in clause 11 of IEC 60335-1 (K)		N/A
20	Clearances, creepage distances, solid insulation and coatings of rigid printed board assemblies		N/A
	Clause 20 is applicable to clearances across full disconnection and micro-disconnection		N/A
	It is also applicable to creepage distances for functional insulation, across full disconnection and micro-disconnection, as stated in Table 24		N/A
I	ANNEX I (NORMATIVE) MOTORS HAVING BASIC INSULATION THAT IS INADEQUATE FOR THE RATED VOLTAGE OF THE APPLIANCE		N/A

IEC 60335-2-29			
Clause	Requirement + Test	Result - Remark	Verdict
	The following modifications to this standard are applicable for motors having basic insulation that is inadequate for the rated voltage of the appliance:		N/A
8	Protection against access to live parts		N/A
8.1	Metal parts of the motor are considered to be bare live parts		N/A
11	Heating		N/A
11.3	The temperature rise of the body of the motor is determined instead of the temperature rise of the windings		N/A
11.8	The temperature rise of the body of the motor, where in contact with insulating material, not exceeding values in table 3 for the relevant insulating material		N/A
16	Leakage current and electric strength		N/A
16.3	Insulation between live parts of the motor and its other metal parts is not subjected to the test		N/A
19	Abnormal operation		N/A
19.1	The tests of 19.7 to 19.9 are not carried out		N/A
19.1.101	Appliance operated at rated voltage with each of the following fault conditions:		N/A
	- short circuit of the terminals of the motor, including any capacitor incorporated in the motor circuit		N/A
	- short circuit of each diode of the rectifier		N/A
	- open circuit of the supply to the motor		N/A
	- open circuit of any parallel resistor, the motor being in operation		N/A
	Only one fault simulated at a time, the tests carried out consecutively		N/A
22	Construction		N/A
22.1.101	For class I appliances incorporating a motor supplied by a rectifier circuit, the d.c. circuit being insulated from accessible parts of the appliance by double or reinforced insulation		N/A
	Compliance checked by the tests specified for double and reinforced insulation		N/A
J	ANNEX J (NORMATIVE) COATED PRINTED CIRCUIT BOARDS		N/A
	Testing of protective coatings of printed circuit boards carried out in accordance with IEC 60664-3 with the following modifications:		N/A
5.7	Conditioning of the test specimens		N/A
	When production samples are used, three samples of the printed circuit board are tested		N/A
5.7.1	Cold		N/A

IEC 60335-2-29			
Clause	Requirement + Test	Result - Remark	Verdict
	The test is carried out at -25 °C		N/A
5.7.3	Rapid change of temperature		N/A
	Severity 1 is specified		N/A
5.9	Additional tests		N/A
	This subclause is not applicable		N/A
K	ANNEX K (NORMATIVE) OVERVOLTAGE CATEGORIES		P
	The information on overvoltage categories is extracted from IEC 60664-1		P
	Overvoltage category is a numeral defining a transient overvoltage condition		P
	Equipment of overvoltage category IV is for use at the origin of the installation		N/A
	Equipment of overvoltage category III is equipment in fixed installations and for cases where the reliability and the availability of the equipment is subject to special requirements		N/A
	Equipment of overvoltage category II is energy consuming equipment to be supplied from the fixed installation		P
	If such equipment is subjected to special requirements with regard to reliability and availability, overvoltage category III applies		N/A
	Equipment of overvoltage category I is equipment for connection to circuits in which measures are taken to limit transient overvoltages to an appropriate low level		N/A
L	ANNEX L (INFORMATIVE) GUIDANCE FOR THE MEASUREMENT OF CLEARANCES AND CREEPAGE DISTANCES		P
	Information for the determination of clearances and creepage distances		P
M	ANNEX M (NORMATIVE) POLLUTION DEGREE		P
	The information on pollution degrees is extracted from IEC 60664-1		P
	Pollution		P
	The microenvironment determines the effect of pollution on the insulation, taking into account the macroenvironment		P
	Means may be provided to reduce pollution at the insulation by effective enclosures or similar		P

IEC 60335-2-29			
Clause	Requirement + Test	Result - Remark	Verdict
	Minimum clearances specified where pollution may be present in the microenvironment		P
	Degrees of pollution in the microenvironment		P
	For evaluating creepage distances, the following degrees of pollution in the microenvironment are established:		P
	- pollution degree 1: no pollution or only dry, non-conductive pollution occurs. The pollution has no influence		N/A
	- pollution degree 2: only non-conductive pollution occurs, except that occasionally a temporary conductivity caused by condensation is to be expected		P
	- pollution degree 3: conductive pollution occurs or dry non-conductive pollution occurs that becomes conductive due to condensation that is to be expected		N/A
	- pollution degree 4: the pollution generates persistent conductivity caused by conductive dust or by rain or snow		N/A
N	ANNEX N (NORMATIVE) PROOF TRACKING TEST		P
	The proof tracking test is carried out in accordance with IEC 60112 with the following modifications:		P
7	Test apparatus		P
7.3	Test solutions		P
	Test solution A is used		P
10	Determination of proof tracking index (PTI)		P
10.1	Procedure		P
	The proof voltage is 100V, 175V, 400V or 600V		P
	The test is carried out on five specimens		P
	In case of doubt, additional test with proof voltage reduced by 25V, the number of drops increased to 100		N/A
10.2	Report		N/A
	The report states if the PTI value was based on a test using 100 drops with a test voltage of (PTI-25) V		N/A
O	ANNEX O (INFORMATIVE) SELECTION AND SEQUENCE OF THE TESTS OF CLAUSE 30		P
	Description of tests for determination of resistance to heat and fire		P

IEC 60335-2-29			
Clause	Requirement + Test	Result - Remark	Verdict
P	ANNEX P (INFORMATIVE) GUIDANCE FOR THE APPLICATION OF THIS STANDARD TO APPLIANCES USED IN TROPICAL CLIMATES		N/A
	Modifications applicable for class 0 and 01 appliances having a rated voltage exceeding 150V, intended to be used in countries having a tropical climate and that are marked with symbol IEC 60417-6332		N/A
	Modifications may also be applied to class 1 appliances having a rated voltage exceeding 150V, intended to be used in countries having a tropical climate and that are marked with symbol IEC 60417-6332, if liable to be connected to a supply mains that excludes the protective earthing conductor		N/A
5.7	The ambient temperature for the tests of clauses 11 and 13 is 40 +3/0 °C		N/A
7.1	The appliance marked with symbol IEC 60417-6332		N/A
7.12	The instructions state that the appliance is to be supplied through a residual current device (RCD) having a rated residual operating current not exceeding 30 mA		N/A
	The instructions state that the appliance is considered to be suitable for use in countries having a tropical climate, but may also be used in other countries		N/A
	If symbol IEC 60417-6332 is used, its meaning is explained		N/A
11.8	The values of Table 3 are reduced by 15 K		N/A
13.2	The leakage current for class I appliances not exceeding 0,5 mA		N/A
15.3	The value of t is 37 °C		N/A
16.2	The leakage current for class I appliances not exceeding 0,5 mA (mA):		N/A
19.13	The leakage current test of 16.2 is applied in addition to the electric strength test of 16.3		N/A
Q	ANNEX Q (INFORMATIVE) SEQUENCE OF TESTS FOR THE EVALUATION OF ELECTRONIC CIRCUITS		P
	Description of tests for appliances incorporating electronic circuits		P
R	ANNEX R (NORMATIVE) SOFTWARE EVALUATION		N/A
	Programmable electronic circuits requiring software incorporating measures to control the fault/error conditions specified in table R.1 or R.2 validated in accordance with the requirements of this annex		N/A
R.1	Programmable electronic circuits using software		N/A

IEC 60335-2-29			
Clause	Requirement + Test	Result - Remark	Verdict
	Programmable electronic circuits requiring software incorporating measures to control the fault/error conditions specified in table R.1 or R.2 constructed so that the software does not impair compliance with the requirements of this standard		N/A
R.2	Requirements for the architecture		N/A
	Programmable electronic circuits requiring software incorporating measures to control the fault/error conditions specified in table R.1 or R.2 use measures to control and avoid software-related faults/errors in safety-related data and safety-related segments of the software		N/A
R.2.1.1	Programmable electronic circuits requiring software incorporating measures to control the fault/error conditions specified in table R.2 have one of the following structures:		N/A
	- single channel with periodic self-test and monitoring		N/A
	- dual channel (homogenous) with comparison		N/A
	- dual channel (diverse) with comparison		N/A
	Programmable electronic circuits requiring software incorporating measures to control the fault/error conditions specified in table R.1 have one of the following structures:		N/A
	- single channel with functional test		N/A
	- single channel with periodic self-test		N/A
	- dual channel without comparison		N/A
R.2.2	Measures to control faults/errors		N/A
R.2.2.1	When redundant memory with comparison is provided on two areas of the same component, the data in one area is stored in a different format from that in the other area		N/A
R.2.2.2	Programmable electronic circuits with functions requiring software incorporating measures to control the fault/error conditions specified in table R.2 and that use dual channel structures with comparison, have additional fault/error detection means for any fault/errors not detected by the comparison		N/A
R.2.2.3	For programmable electronic circuits with functions requiring software incorporating measures to control the fault/error conditions specified in table R.1 or R.2, means are provided for the recognition and control of errors in transmissions to external safety-related data paths		N/A

IEC 60335-2-29			
Clause	Requirement + Test	Result - Remark	Verdict
R.2.2.4	For programmable electronic circuits with functions requiring software incorporating measures to control the fault/error conditions specified in table R.1 or R.2, the programmable electronic circuits incorporate measures to address the fault/errors in safety-related segments and data indicated in table R.1 and R.2 as appropriate		N/A
R.2.2.5	For programmable electronic circuits with functions requiring software incorporating measures to control the fault/error conditions specified in table R.1 or R.2, detection of a fault/error occur before compliance with clause 19 is impaired		N/A
R.2.2.6	The software is referenced to relevant parts of the operating sequence and the associated hardware functions		N/A
R.2.2.7	Labels used for memory locations are unique		N/A
R.2.2.8	The software is protected from user alteration of safety-related segments and data		N/A
R.2.2.9	Software and safety-related hardware under its control is initialized and terminates before compliance with clause 19 is impaired		N/A
R.3	Measures to avoid errors		N/A
R.3.1	General		N/A
	For programmable electronic circuits with functions requiring software incorporating measures to control the fault/error conditions specified in table R.1 or R.2, the following measures to avoid systematic fault in the software are applied		N/A
	Software that incorporates measures used to control the fault/error conditions specified in table R.2 is inherently acceptable for software required to control the fault/error conditions specified in table R.1		N/A
R.3.2	Specification		N/A
R.3.2.1	Software safety requirements:	Software Id:	N/A
	The specification of the software safety requirements includes the descriptions listed		N/A
R.3.2.2	Software architecture		N/A

IEC 60335-2-29			
Clause	Requirement + Test	Result - Remark	Verdict
R.3.2.2.1	The specification of the software architecture includes the aspects listed - techniques and measures to control software faults/errors (refer to R.2.2); - interactions between hardware and software; - partitioning into modules and their allocation to the specified safety functions; - hierarchy and call structure of the modules (control flow); - interrupt handling; - data flow and restrictions on data access; - architecture and storage of data; - time-based dependencies of sequences and data	Document ref. No:	N/A
R.3.2.2.2	The architecture specification is validated against the specification of the software safety requirements by static analysis		N/A
R.3.2.3	Module design and coding		N/A
R.3.2.3.1	Based on the architecture design, software is suitably refined into modules		N/A
	Software module design and coding is implemented in a way that is traceable to the software architecture and requirements		N/A
R.3.2.3.2	Software code is structured		N/A
R.3.2.3.3	Coded software is validated against the module specification by static analysis		N/A
	The module specification is validated against the architecture specification by static analysis		N/A
R.3.3.3	Software validation		N/A
	The software is validated with reference to the requirements of the software safety requirements specification		N/A
	Compliance is checked by simulation of:		N/A
	- input signals present during normal operation		N/A
	- anticipated occurrences		N/A
	- undesired conditions requiring system action		N/A

TABLE R.1^e – GENERAL FAULT/ERROR CONDITIONS

Component ^a	Fault/error	Acceptable measures ^{b, c}	Definitions	Document reference for applied measure	Document reference for applied test	Verdict

IEC 60335-2-29						
Clause	Requirement + Test		Result - Remark		Verdict	
TABLE R.1 ^e – GENERAL FAULT/ERROR CONDITIONS						
Component ^a	Fault/error	Acceptable measures ^{b, c}	Definitions	Document reference for applied measure	Document reference for applied test	Verdict
1 CPU 1.1 Registers	Stuck at	Functional test, or periodic self-test using either: <ul style="list-style-type: none"> - static memory test, or - word protection with single bit redundancy 	H.2.16.5 H.2.16.6 H.2.19.6 H.2.19.8.2	--	--	N/A
1.2 VOID				--	--	N/A
1.3 Programme counter	Stuck at	Functional test, or Periodic self-test, or Independent time-slot monitoring, or Logical monitoring of the programme sequence	H.2.16.5 H.2.16.6 H.2.18.10.4 H.2.18.10.2	--	--	N/A
2 Interrupt handling and execution	No interrupt or too frequent interrupt	Functional test, or time-slot monitoring	H.2.16.5 H.2.18.10.4	--	--	N/A
3 Clock	Wrong frequency (for quartz synchronized clock: harmonics/ sub-harmonics only)	Frequency monitoring, or time slot monitoring	H.2.18.10.1 H.2.18.10.4	--	--	N/A
4. Memory 4.1 Invariable memory	All single bit faults	Periodic modified checksum, or multiple checksum, or word protection with single bit redundancy	H.2.19.3.1 H.2.19.3.2 H.2.19.8.2	--	--	N/A
4.2 Variable memory	DC fault	Periodic static memory test, or word protection with single bit redundancy	H.2.19.6 H.2.19.8.2	--	--	N/A

IEC 60335-2-29						
Clause	Requirement + Test		Result - Remark			Verdict
TABLE R.1^e – GENERAL FAULT/ERROR CONDITIONS						
Component ^a	Fault/error	Acceptable measures ^{b, c}	Definitions	Document reference for applied measure	Document reference for applied test	Verdict
4.3 Addressing (relevant to variable and invariable memory)	Stuck at	Word protection with single bit redundancy including the address	H.2.19.8.2	--	--	N/A
5 Internal data path	Stuck at	Word protection with single bit redundancy	H.2.19.8.2	--	--	N/A
5.1 VOID				--	--	N/A
5.2 Addressing	Wrong address	Word protection with single bit redundancy including the address	H.2.19.8.2	--	--	N/A
6 External communication	Hamming distance 3	Word protection with multi-bit redundancy, or CRC – single work, or Transfer redundancy, or Protocol test	H.2.19.8.1 H.2.19.4.1 H.2.18.2.2 H.2.18.14	--	--	N/A
6.1 VOID				--	--	N/A
6.2 VOID				--	--	N/A
6.3 Timing	Wrong point in time Wrong sequence	Time-slot monitoring, or scheduled transmission Time-slot and logical monitoring, or comparison of redundant communication channels by either: - reciprocal comparison - independent hardware comparator Logical monitoring, or time-slot monitoring, or Scheduled transmission	H.2.18.10.4 H.2.18.18 H.2.18.10.3 H.2.18.15 H.2.18.3 H.2.18.10.2 H.2.18.10.4 H.2.18.18	--	--	N/A
7 Input/output periphery	Fault conditions specified in 19.11.2	Plausibility check	H.2.18.13	--	--	N/A
7.1 VOID				--	--	N/A

IEC 60335-2-29			
Clause	Requirement + Test	Result - Remark	Verdict

TABLE R.1^e – GENERAL FAULT/ERROR CONDITIONS

Component ^a	Fault/error	Acceptable measures ^{b, c}	Definitions	Document reference for applied measure	Document reference for applied test	Verdict
7.2 Analog I/O	Fault conditions specified in 19.11.2	Plausibility check	H.2.18.13	--	--	N/A
7.2.1 A/D and D/A-converter						
7.2.2 Analog multiplexer	Wrong addressing	Plausibility check	H.2.18.13	--	--	N/A
8 VOID				--	--	N/A
9 Custom chips ^d e.g. ASIC, GAL, gate array	Any output outside the static and dynamic functional specification	Periodic self-test	H.2.16.6	--	--	N/A

NOTE A Stuck-at fault model denotes a fault model representing an open circuit or a non-varying signal level. A DC fault model denotes a stuck-at fault model incorporating short circuit between signal lines.

- a) For fault/error assessment, some components are divided into their sub-functions.
 b) For each sub-function in the table, the Table R.2 measure will cover the software fault/error.
 c) Where more than one measure is given for a sub-function, these are alternatives.
 d) To be divided as necessary by the manufacturer into sub-functions.
 e) Table R.1 is applied according to the requirements of R.1 to R.2.2.9 inclusive.

S	ANNEX S (NORMATIVE) BATTERY OPERATED APPLIANCES POWERED BY BATTERIES THAT ARE NON-RECHARGEABLE OR NOT RECHARGED IN THE APPLIANCE	N/A
	The following modifications to this standard are applicable for battery-operated appliances where the batteries are either non-rechargeable (primary batteries), or	N/A
	rechargeable batteries (secondary batteries) that are not recharged in the appliance	N/A
5.8.1	If the supply terminals for the connection of the battery have no indication of polarity, the more unfavourable polarity is applied	N/A
5.S.101	Appliances intended for use with a battery box are tested with the battery box supplied with the appliance or with the battery box recommended in the instructions	N/A
5.S.102	Appliances are tested as motor-operated appliances.	N/A

IEC 60335-2-29			
Clause	Requirement + Test	Result - Remark	Verdict
7.1	Appliances marked with the battery voltage (V) and the polarity of the terminals, unless :		N/A
	the polarity is irrelevant		N/A
	Appliances also marked with:		N/A
	– name, trade mark or identification mark of the manufacturer or responsible vendor :		N/A
	– model or type reference :		N/A
	– IP number according to degree of protection against ingress of water, other than IPX0... .. :		N/A
	– type reference of battery or batteries..... .. :		N/A
	If relevant, the positive terminal is indicated by the symbol IEC 60417-5005 and the negative terminal by the symbol IEC 60417-5006		N/A
	If appliances use more than one battery, they are marked to indicate correct polarity connection of the batteries		N/A
7.6	Additional symbols		N/A
7.12	The instructions contain the following, as applicable:		N/A
	– the types of batteries that may be used... .. :		N/A
	– how to remove and insert the batteries		N/A
	– non-rechargeable batteries are not to be recharged		N/A
	– rechargeable batteries are to be removed from the appliance before being charged		N/A
	– different types of batteries or new and used batteries are not to be mixed		N/A
	– batteries are to be inserted with the correct polarity		N/A
	– exhausted batteries are to be removed from the appliance and safely disposed of		N/A
	– if the appliance is to be stored unused for a long period, the batteries are removed		N/A
	– the supply terminals are not to be short-circuited		N/A
11.5	Appliances are supplied with the most unfavourable supply voltage between		N/A
	– 0,55 and 1,0 times the battery voltage, if the appliance can be used with non-rechargeable batteries		N/A
	– 0,75 and 1,0 times battery voltage, if the appliance is designed for use with rechargeable batteries only		N/A

IEC 60335-2-29			
Clause	Requirement + Test	Result - Remark	Verdict
	The values specified in Table S.101 for the internal resistance per cell of the battery is taken into account		N/A
19.1	The tests are carried out with the battery fully charged unless otherwise specified		N/A
19.13	The battery does not rupture or ignite		N/A
19.S.101	Appliances are supplied with the voltage specified in 11.5. The supply terminals having an indication of polarity are connected to the opposite polarity, unless		N/A
	such a connection is unlikely to occur due to the construction of the appliance		N/A
19.S.102	For appliances with provision for multiple batteries, one or more of the batteries are reversed and the appliance is operated, if reversal of batteries is allowed by the construction		N/A
25.5	The flexible leads or flexible cord used to connect an external battery or battery box in is connected to the appliance by a type X attachment		N/A
25.13	This requirement is not applicable to the flexible leads or flexible cord connecting external batteries or a battery box with an appliance		N/A
25.S.101	Appliances have suitable means for connection of the battery. If the type of battery is marked on the appliance, the means of connection is suitable for this type of battery		N/A
26.5	Terminal devices in an appliance for the connection of the flexible leads or flexible cord connecting an external battery or battery box are so located or shielded that there is no risk of accidental connection between supply terminals		N/A
30.2.3.2	There is no battery in the area of the vertical cylinder used for the consequential needle flame test, unless		N/A
	the battery is shielded by a barrier that meets the needle flame test of Annex E, or		N/A
	that comprises material classified as V-0 or V-1 according to IEC 60695-11-10		N/A
T	ANNEX T (NORMATIVE) UV-C RADIATION EFFECT ON NON-METALLIC MATERIALS		N/A
	Requirements for non-metallic materials subject to direct or reflected UV-C radiation exposure and whose mechanical and electrical properties are relied upon for compliance with the		N/A
	Does not apply to glass, ceramic and similar materials		N/A

IEC 60335-2-29			
Clause	Requirement + Test	Result - Remark	Verdict
	Tested as specified in ISO 4892-1 and ISO 4892-2, with the following modifications:		N/A
	Modifications to ISO 4892-1:		N/A
5.1.6	The UV-C emitter is a low pressure mercury lamp with a quartz envelope having a continuous spectral irradiance of 10 W/m ² at 254 nm		N/A
	Subclause 5.1.6.1 and Table 1 are not applicable		N/A
5.2.4	The black-panel temperature shall be 63 °C +/- 3 °C		N/A
5.3.1	Humidification of the chamber air is specified in part 2 when necessary		N/A
9	This clause is not applicable		N/A
	Modifications to ISO 4892-2:		N/A
7.1	At least three test specimens are tested		N/A
	Ten samples of internal wiring is tested		N/A
7.2	The specimens are attached to the specimen holders such that they are not subject to any stress		N/A
7.3	Apparatus prepared as specified		N/A
	The test specimens and, if used, the irradiance-measuring instrument are exposed for 1 000 h		N/A
7.4	If used, a radiometer is mounted and calibrated such that it measures the irradiance at the exposed surface of the test specimen		N/A
7.5	Material properties and test methods for parts providing mechanical support or impact resistance as specified in Table T.1		N/A
	Material properties and test method for electrical insulation of internal wiring as specified in Table T.2		N/A
8	This clause is not applicable		N/A
AA	ANNEX AA (NORMATIVE) BATTERY CHARGERS FOR USE BY CHILDREN (IEC 60335-2-29)		N/A
	Battery chargers intended to be used by children at least eight years old without supervision comply with this standard but as modified by this annex		N/A
	The battery charger have a d.c. output at SELV not exceeding 30 V and a rated output not exceeding 50 VA		N/A
5.201	When batteries used, the generally available rechargeable batteries giving the most unfavourable conditions used		N/A
6.1	Battery chargers suitable for outdoor use class III		N/A

IEC 60335-2-29			
Clause	Requirement + Test	Result - Remark	Verdict
	Other battery chargers class II or class III		N/A
6.2	Battery chargers suitable for outdoor use at least IPX7		N/A
6.201	Enclosures classified at least IP3X with regard to protection against ingress of solid foreign objects		N/A
7.1	Symbol 5957 of IEC 60417 or text "For indoor use only" for battery chargers for indoor use		N/A
	IP number		N/A
	Smiling face symbol together with 8+		N/A
7.6	Correct symbols used		N/A
7.12	Instructions for safe use contains:		—
	- Warning to only allow children at least 8 years old to use battery charger		N/A
	- Sufficient instructions for safe use of battery charger by a child		N/A
	- Explanation that battery charger is not a toy		N/A
	- Instruction for child not to try and recharge non-rechargeable batteries		N/A
	- Warning to examine battery charger regularly for damage		N/A
	- Warning in case battery charger is damaged		N/A
	Instruction for Class III battery charger to be supplied from transformer for toys		N/A
7.14	Height of symbol marked on the appliance at least 10 mm		N/A
	Height of lettering at least 3 mm		N/A
8.1.1	Use of test probe B of IEC 61032: no contact with live parts or metal parts separated from live parts by basic insulation only, even after use of a tool to remove parts of enclosure		N/A
10.101	The output voltage not exceed 42,4 V peak		N/A
11.8	Temperature rises of parts that can be touched by test probe 18 of IEC 61032		N/A
	- 25 K, if of metal		N/A
	- 35 K, if of other material		N/A
17	Temperature rises of parts that can be touched by test probe 18 of IEC 61032		N/A
	- 45 K, if of metal		N/A
	- 55 K, if of other material		N/A

IEC 60335-2-29			
Clause	Requirement + Test	Result - Remark	Verdict
19.13	Temperature rises of parts that can be touched by test probe 18 of IEC 61032		N/A
	- 45 K, if of metal		N/A
	- 55 K, if of other material		N/A
21.201	Impact test Eha of IEC 60068-2-75, with impact energy of 2 J		N/A
	For rectangular shaped battery chargers, the four sides and four edges are subjected to an impact		N/A
	For other battery chargers, the enclosure is subjected to eight impacts equally spaced over the periphery		N/A
	Free fall test Ed, Procedure 1 of IEC 60068-2-32, from the height of 500 mm		N/A
	Battery charger not damaged to such extend that compliance is impaired, live parts shall not become accessible		N/A
22.201	Battery charger with only one rated voltage or rated voltage range		N/A
	Battery charger not incorporate means for manually adjusting output voltage		N/A
22.202	Battery chargers constructed so that reverse charging is prevented, regardless of the state of charge of the battery		N/A
	This applies even if the battery is inserted with the wrong polarity		N/A
24.201	Transformer for toys tested in accordance with sub-clauses 7.2, 20.5.1 and 20.101 and clause 15 of standard IEC 61558-2-7		N/A
25.1	Battery charger not provided with an appliance inlet		N/A
25.5	Battery charger provided with type Y or type Z attachment		N/A
BB	ANNEX BB (NORMATIVE) ISOLATING TRANSFORMERS (IEC 60335-2-29:2016/AMD1:2019)		P
7.1	Isolating transformers for specific use marked with:		—
	– name, trademark or identification mark of the manufacturer or responsible vendor		P
	– model or type reference		P
	Fail-safe transformers comply with Subclause 15.5 of IEC 61558-1		N/A
	This test carried out on three transformers		N/A
22	Subclauses 19.1 and 19.1.2 of IEC 61558-2-4:2009 applicable		N/A

IEC 60335-2-29			
Clause	Requirement + Test	Result - Remark	Verdict
29.1, 29.2 and 29.3	The distances specified in items 2a, 2c and 3 in Table 13 of IEC 61558-1 apply		P
	For insulated winding wires complying with Subclause 19.12.3 of IEC 61558-1, there are no requirements for clearances or creepage distances		P
	In addition, for windings providing reinforced insulation, the distance specified in item 2c of Table 13 of IEC 61558-1 is not assessed		P
	For isolating transformers subjected to periodic voltages with a frequency exceeding 30 kHz, the clearances, creepage distances and solid insulation values specified in IEC 60664-4 are applicable, if these values are greater than the values specified in items 2a, 2c and 3 in Table 13 of IEC 61558-1		N/A

IEC 60335-2-29			
Clause	Requirement + Test	Result - Remark	Verdict

10.1	TABLE: Power input deviation					N/A
Input deviation of/at:	P rated (W)	P measured (W)	ΔP	Required ΔP	Remark	
--	--	--	--	--	--	
Supplementary information:						

10.2	TABLE: Input current deviation					P
Current deviation of/at:	I rated (A)	I measured (A)	ΔI (%)	Required ΔI (%)	Remark	
Model: FY15012010000						
100V 50Hz	2.5	2.138	-28.73%	+15%	Load with Figure 101.	
100V 60Hz	2.5	2.201	-26.63%	+15%		
240V 50HZ	2.5	0.959	-68.03%	+15%		
240V 60HZ	2.5	0.942	-68.60%	+15%		
100V 50Hz	2.5	2.108	-29.73%	+15%	Loaded with Li-ion battery	
100V 60Hz	2.5	2.126	-29.13%	+15%		
240V 50HZ	2.5	0.926	-69.13%	+15%		
240V 60HZ	2.5	0.918	-69.40%	+15%		
Model: FY1501509000						
100V 50Hz	2.5	2.413	-19.57%	+15%	Load with Figure 101.	
100V 60Hz	2.5	2.504	-16.53%	+15%		
240V 50HZ	2.5	1.072	-64.27%	+15%		
240V 60HZ	2.5	1.054	-64.87%	+15%		
100V 50Hz	2.5	2.308	-23.07%	+15%	Loaded with Li-ion battery	
100V 60Hz	2.5	2.386	-20.47%	+15%		
240V 50HZ	2.5	0.996	-66.80%	+15%		
240V 60HZ	2.5	0.983	-67.23%	+15%		
Model: FY1506722000						

IEC 60335-2-29						
Clause	Requirement + Test				Result - Remark	Verdict
100V 50Hz	2.5	2.379	-20.69%	+15%	Load with Figure 101.	
100V 60Hz	2.5	2.469	-17.70%	+15%		
240V 50Hz	2.5	1.057	-64.77%	+15%		
240V 60Hz	2.5	1.039	-65.36%	+15%		
100V 50Hz	2.5	2.276	-24.14%	+15%	Loaded with Li-ion battery	
100V 60Hz	2.5	2.353	-21.58%	+15%		
240V 50Hz	2.5	0.982	-67.26%	+15%		
240V 60Hz	2.5	0.969	-67.69%	+15%		
Supplementary information:						

10.102	TABLE: Output current deviation						P
Current deviation of/at:	U _o rated (V)	I _o rated (A)	I _o measured (A)	ΔI _o (%)	Required ΔI _o (%)	Remark	
Model: FY15012010000							
100V / 50Hz	12.0	10.0	9.85	-1.50%	±10%	Pass	
100V / 60Hz	12.0	10.0	9.85	-1.50%	±10%	Pass	
240V / 50Hz	12.0	10.0	9.87	-1.30%	±10%	Pass	
240V / 60Hz	12.0	10.0	9.87	-1.30%	±10%	Pass	
Model: FY1501509000							
100V / 50Hz	15.0	9.0	8.76	-2.67%	±10%	Pass	
100V / 60Hz	15.0	9.0	8.76	-2.67%	±10%	Pass	
240V / 50Hz	15.0	9.0	8.81	-2.11%	±10%	Pass	
240V / 60Hz	15.0	9.0	8.81	-2.11%	±10%	Pass	
Model: FY1506722000							
100V / 50Hz	67.2	2.0	1.88	-6.00%	±10%	Pass	
100V / 60Hz	67.2	2.0	1.88	-6.00%	±10%	Pass	
240V / 50Hz	67.2	2.0	1.95	-2.50%	±10%	Pass	
240V / 60Hz	67.2	2.0	1.95	-2.50%	±10%	Pass	
Supplementary information: --							

11.8	TABLE: Heating Test		P
	Test voltage (V)..... :	See below	—
	Ambient (°C)	See below	—
Thermocouple Locations	Max. temperature rise measured, ΔT (K)		Max. temperature rise limit, ΔT (K)

IEC 60335-2-29						
Clause	Requirement + Test				Result - Remark	Verdict
	94V/60Hz		254.4V/50Hz		--	
	Label up	Label down	Label up	Label down		
Model: FY15012010000						
AC Inlet	21.5	23.9	18.6	20.6	30	
MOV1	42.2	42.7	37.8	38.1	45	
CX1	57.0	56.9	51.6	51.3	60	
LF1 winding	64.7	64.5	58.7	58.4	90	
LF2 winding	65.3	67.3	59.3	61.0	90	
PCB near BD1	68.7	71.3	62.5	64.7	90	
C5A	61.0	60.8	55.3	54.9	65	
C5B	62.2	61.8	56.4	55.8	65	
PCB near Q3	67.9	69.3	61.7	62.8	90	
CY8	63.2	64.3	57.3	58.2	85	
T1 winding	65.9	63.7	59.9	57.6	70	
T1 core	62.1	62.1	56.3	56.1	70	
U5	55.3	55.9	50.0	50.4	60	
PCB near D3A	70.6	72.6	64.2	65.9	90	
C7	61.0	55.9	55.3	50.4	65	
L1 winding	70.2	70.8	63.9	64.2	90	
C10	46.3	47.6	41.6	42.6	65	
LF3 winding	45.6	47.9	41.0	42.9	90	
Output wire	32.0	33.6	28.3	29.6	40	
PCB near U1	70.5	64.6	64.1	58.4	90	

IEC 60335-2-29						
Clause	Requirement + Test				Result - Remark	Verdict
Enclosure inside near T1 top	56.0	52.7	50.6	47.4	80	
Enclosure inside near T1 bottom	54.6	57.7	49.3	52.0	80	
Enclosure outside near T1 top	41.5	38.4	37.2	34.1	45	
Enclosure outside near T1 bottom	37.7	40.3	33.6	35.9	45	
Test conner	9.7	10.0	9.0	9.2	50	
Ambient	24.5	24.6	24.5	24.6	--	
Supplementary information: Load with Figure 101						

11.8	TABLE: Heating Test				P
	Test voltage (V)..... :			See below	—
	Ambient (°C)			See below	—
Thermocouple Locations	Max. temperature rise measured, ΔT (K)				Max. temperature rise limit, ΔT (K)
	94V/60Hz		254.4V/50Hz		--
	Label up	Label down	Label up	Label down	
Model: FY1501509000					
AC Inlet	21.0	21.8	18.2	18.9	30
MOV1	39.5	40.8	35.6	36.8	45
CX1	54.8	52.0	49.9	47.3	60
LF1 winding	63.9	62.0	58.5	56.7	90
LF2 winding	68.4	68.1	62.7	62.4	90
PCB near BD1	73.8	75.2	67.8	69.1	90
C5A	59.3	58.8	54.2	53.7	65
C5B	59.3	57.0	54.2	52.0	65
PCB near Q3	74.1	72.0	68.1	66.1	90
CY8	60.6	62.2	55.4	56.9	85



IEC 60335-2-29						
Clause	Requirement + Test				Result - Remark	Verdict
T1 winding	67.2	65.7	61.6	60.2	70	
T1 core	62.7	62.2	57.4	56.9	70	
U5	57.8	57.2	52.8	52.2	60	
PCB near D3A	75.0	74.0	68.9	68.0	90	
C7	62.0	61.2	56.7	55.9	65	
L1 winding	66.5	65.2	60.9	59.7	90	
C10	47.6	48.8	43.2	44.3	65	
LF3 winding	52.5	52.2	47.8	47.5	90	
Output wire	36.1	36.8	32.4	33.0	40	
PCB near U1	65.6	62.7	60.1	57.4	90	
Enclosure inside near T1 top	58.2	54.6	53.1	49.7	80	
Enclosure inside near T1 bottom	55.7	58.3	50.8	53.2	80	
Enclosure outside near T1 top	42.4	37.5	38.3	33.7	45	
Enclosure outside near T1 bottom	38.6	42.8	34.7	38.7	45	
Test conner	10.6	10.9	9.6	9.8	50	
Ambient	24.5	24.6	24.5	24.6	--	
Supplementary information: Load with Figure 101						

11.8	TABLE: Heating Test				P
	Test voltage (V) :		See below		—
	Ambient (°C)		See below		—
Thermocouple Locations	Max. temperature rise measured, ΔT (K)			Max. temperature rise limit, ΔT (K)	
	94V/60Hz		254.4V/50Hz		--
	Label up	Label down	Label up	Label down	
Model: FY1506722000					

IEC 60335-2-29						
Clause	Requirement + Test				Result - Remark	Verdict
AC Inlet	20.4	22.5	17.2	19.1	30	
MOV1	40.5	40.8	35.8	36.1	45	
CX1	54.8	54.6	49.2	48.9	60	
LF1 winding	62.3	61.9	56.1	55.8	90	
LF2 winding	62.9	64.6	56.7	58.3	90	
PCB near BD1	66.2	68.5	59.7	61.9	90	
C5A	58.7	58.3	52.8	52.4	65	
C5B	59.9	59.3	53.9	53.3	65	
PCB near Q3	65.4	66.6	59.0	60.1	90	
CY8	60.9	61.7	54.8	55.6	85	
T1 winding	63.5	61.1	57.2	55.0	70	
T1 core	59.8	59.6	53.8	53.6	70	
U5	53.2	53.6	47.7	48.0	60	
PCB near D3A	68.0	69.8	61.5	63.1	90	
C7	58.7	53.6	52.8	48.0	65	
L1 winding	67.7	68.0	61.1	61.5	90	
C10	44.5	45.5	39.5	40.5	65	
LF3 winding	43.8	45.8	38.9	40.8	90	
Output wire	30.6	32.0	26.6	27.9	40	
PCB near U1	67.9	62.0	61.4	55.9	90	
Enclosure inside near T1 top	53.9	50.5	48.3	45.1	80	
Enclosure inside near T1 bottom	52.5	55.3	47.0	49.6	80	

IEC 60335-2-29						
Clause	Requirement + Test				Result - Remark	Verdict
Enclosure outside near T1 top	39.8	36.6	35.2	32.2	45	
Enclosure outside near T1 bottom	36.1	38.5	31.8	33.9	45	
Test conner	9.0	9.1	7.9	8.1	50	
Ambient	24.5	24.6	24.6	24.7	--	
Supplementary information: Load with Figure 101						

11.8	TABLE: Heating Test				P
	Test voltage (V)..... : See below				—
	Ambient (°C) : See below				—
Thermocouple Locations	Max. temperature rise measured, ΔT (K)				Max. temperature rise limit, ΔT (K)
	94V/60Hz		254.4V/50Hz		--
	Label up	Label down	Label up	Label down	
Model: FY15012010000					
AC Inlet	18.0	20.2	--	--	30
MOV1	37.0	37.5	--	--	45
CX1	50.7	50.6	--	--	60
LF1 winding	57.7	57.6	--	--	90
LF2 winding	58.3	60.1	--	--	90
PCB near BD1	61.4	63.8	--	--	90
C5A	54.3	54.2	--	--	65
C5B	55.4	55.1	--	--	65
PCB near Q3	60.7	62.0	--	--	90
CY8	56.4	57.4	--	--	85

IEC 60335-2-29						
Clause	Requirement + Test				Result - Remark	Verdict
T1 winding	58.8	56.8	--	--	70	
T1 core	55.3	55.4	--	--	70	
U5	49.1	49.7	--	--	60	
PCB near D3A	63.2	65.0	--	--	90	
C7	54.3	49.7	--	--	65	
L1 winding	62.8	63.4	--	--	90	
C10	40.8	42.0	--	--	65	
LF3 winding	40.2	42.3	--	--	90	
Output wire	27.7	29.1	--	--	40	
PCB near U1	63.1	57.7	--	--	90	
Enclosure inside near T1 top	49.7	46.7	--	--	80	
Enclosure inside near T1 bottom	48.4	51.3	--	--	80	
Enclosure outside near T1 top	36.4	33.6	--	--	45	
Enclosure outside near T1 bottom	32.9	35.3	--	--	45	
Test conner	7.1	7.4	--	--	50	
Ambient	24.6	24.5	--	--	--	
Supplementary information: Loaded with Li-ion battery						

11.8	TABLE: Heating Test				P
	Test voltage (V) :		See below		—
	Ambient (°C)		See below		—
Thermocouple Locations	Max. temperature rise measured, ΔT (K)				Max. temperature rise limit, ΔT (K)
	94V/60Hz		254.4V/50Hz		--
	Label up	Label down	Label up	Label down	

IEC 60335-2-29					
Clause	Requirement + Test			Result - Remark	Verdict
Model:FY1501509000					
AC Inlet	17.4	18.1	--	--	30
MOV1	34.4	35.6	--	--	45
CX1	48.5	45.9	--	--	60
LF1 winding	56.8	55.1	--	--	90
LF2 winding	61.0	60.7	--	--	90
PCB near BD1	65.9	67.2	--	--	90
C5A	52.6	52.1	--	--	65
C5B	52.6	50.5	--	--	65
PCB near Q3	66.2	64.3	--	--	90
CY8	53.8	55.2	--	--	85
T1 winding	59.9	58.5	--	--	70
T1 core	55.7	55.2	--	--	70
U5	51.2	50.6	--	--	60
PCB near D3A	67.0	66.1	--	--	90
C7	55.1	54.3	--	--	65
L1 winding	59.2	58.0	--	--	90
C10	41.8	42.9	--	--	65
LF3 winding	46.3	46.0	--	--	90
Output wire	31.3	31.9	--	--	40
PCB near U1	58.4	55.7	--	--	90
Enclosure inside near T1 top	51.6	48.3	--	--	80

IEC 60335-2-29						
Clause	Requirement + Test				Result - Remark	Verdict
Enclosure inside near T1 bottom	49.3	51.7	--	--	80	
Enclosure outside near T1 top	37.0	32.5	--	--	45	
Enclosure outside near T1 bottom	33.6	37.4	--	--	45	
Test conner	6.8	7.1	--	--	50	
Ambient	24.5	24.7	--	--	--	
Supplementary information: Loaded with Li-ion battery						

11.8	TABLE: Heating Test				P
	Test voltage (V)..... :			See below	—
	Ambient (°C)			See below	—
Thermocouple Locations	Max. temperature rise measured, ΔT (K)				Max. temperature rise limit, ΔT (K)
	94V/60Hz		254.4V/50Hz		--
	Label up	Label down	Label up	Label down	
Model:FY1506722000					
AC Inlet	17.1	18.9	--	--	30
MOV1	35.6	35.6	--	--	45
CX1	48.8	48.3	--	--	60
LF1 winding	55.7	55.1	--	--	90
LF2 winding	56.2	57.6	--	--	90
PCB near BD1	59.2	61.2	--	--	90
C5A	52.4	51.8	--	--	65
C5B	53.4	52.7	--	--	65
PCB near Q3	58.5	59.4	--	--	90
CY8	54.3	54.9	--	--	85



IEC 60335-2-29						
Clause	Requirement + Test			Result - Remark		Verdict
T1 winding	56.7	54.4	--	--	70	
T1 core	53.3	53.0	--	--	70	
U5	47.3	47.4	--	--	60	
PCB near D3A	60.9	62.3	--	--	90	
C7	52.4	47.4	--	--	65	
L1 winding	60.6	60.7	--	--	90	
C10	39.2	40.0	--	--	65	
LF3 winding	38.6	40.3	--	--	90	
Output wire	26.5	27.5	--	--	40	
PCB near U1	60.8	55.2	--	--	90	
Enclosure inside near T1 top	47.9	44.6	--	--	80	
Enclosure inside near T1 bottom	46.7	49.0	--	--	80	
Enclosure outside near T1 top	35.0	31.8	--	--	45	
Enclosure outside near T1 bottom	31.6	33.5	--	--	45	
Test conner	6.6	6.5	--	--	50	
Ambient	24.2	24.5	--	--	--	
Supplementary information: Loaded with Li-ion battery						

11.8	TABLE: Heating Test, resistance method					N/A
	Test voltage (V)		--		--	
	Ambient, t₁ (°C)		--		--	
	Ambient, t₂ (°C)		--		--	
Temperature rise of winding	R₁ (Ω)	R₂ (Ω)	ΔT (K)	Max. ΔT (K)	Insulation class	

IEC 60335-2-29						
Clause	Requirement + Test				Result - Remark	Verdict
11.8	TABLE: Heating Test, resistance method					N/A
	Test voltage (V)				--	—
	Ambient, t ₁ (°C)				--	—
	Ambient, t ₂ (°C)				--	—
Temperature rise of winding		R₁ (Ω)	R₂ (Ω)	ΔT (K)	Max. ΔT (K)	Insulation class
--		--	--	--	--	--
Supplementary information:						

13.2	TABLE: Leakage Current				P	
	Heating appliances: 1,15 x rated input (W)				--	—
	Motor-operated and combined appliances: 1,06 x rated voltage (V)				254.4V	—
Leakage current between:				I (mA)	Max. allowed I (mA)	
Live parts and output terminal				0.010	0.35	
Live parts and plastic enclosure				0.005	0.35	
Supplementary information:						

13.3	TABLE: Dielectric strength			P
Test voltage applied between:		Test potential applied (V)	Breakdown / flashover (Yes/No)	
Live parts and output terminal		3000Vac	No	
Live parts and plastic enclosure		3000Vac	No	
Pri. Winding – Sec. Winding of transformer (T1)		3000Vac	No	
Secondary and core of transformer (T1)		3000Vac	No	
One layer of insulation tape		1750Vac	No	
Supplementary information:				

14	TABLE: Transient overvoltages					N/A
Clearance between:		CI (mm)	Required CI (mm)	Rated impulse voltage (V)	Impulse test voltage (V)	Flashover (Yes/No)
--		--	--	--	--	--
Supplementary information:						

16.2	TABLE: Leakage Current				P	
	Single phase appliances: 1,06 x rated voltage (V)				254.4V	—

IEC 60335-2-29			
Clause	Requirement + Test	Result - Remark	Verdict
	Three phase appliances 1,06 x rated voltage divided by $\sqrt{3}$ (V).....:	--	—
Leakage current between:		I (mA)	Max. allowed I (mA)
Live parts and output terminal		0.015	0.25
Live parts and plastic enclosure		0.005	0.25
Supplementary information:			

16.3	TABLE: Dielectric strength			P
Test voltage applied between:		Test potential applied (V)	Breakdown / flashover (Yes/No)	
Live parts and output terminal		3000Vac	No	
Live parts and plastic enclosure		3000Vac	No	
Pri. Winding – Sec. Winding of transformer (T1)		3000Vac	No	
Secondary and core of transformer (T1)		3000Vac	No	
One layer of insulation tape		1750Vac	No	
Supplementary information:				

17	TABLE: Overload Protection, resistance method					P
	Test voltage (V).....:	254.4			—	
	Ambient, t₁ (°C).....:	25			—	
	Ambient, t₂ (°C).....:	25			—	
Temperature of winding:		R ₁ (Ω)	R ₂ (Ω)	Δ T (K)	T (°C)	Max. T (°C)
Model: FY15012010000						
T1 winding		--	--	71.8	96.2	175
Model: FY1506722000						
T1 winding		--	--	70.3	94.7	175
Model: FY1501509000						
T1 winding		--	--	68.2	92.6	175
Output wire		--	--	31.4	55.8	95
Supplementary information: Short circuit transformer (T1), appliance shut down immediately, no hazard.						



IEC 60335-2-29			
Clause	Requirement + Test	Result - Remark	Verdict

19	Abnormal Operation Conditions		P
Operational characteristics		YES/NO	Operational conditions
Are there electronic circuits to control the appliance operation?		Yes	Input: 254.4V/50Hz, Load: RC load Figure 101 & Battery pack load
Are there “off” or “stand-by” position?		No	--
The unintended operation of the appliance results in dangerous malfunction?		No	--

Sub-clause	Operating conditions description	Test results description	PEC description	EMP 19.11.4	Software type required	19.11.3 PEC	Final result
19.2	N/A	N/A	N/A	N/A	N/A	N/A	N/A
19.3	N/A	N/A	N/A	N/A	N/A	N/A	N/A
19.4	N/A	N/A	N/A	N/A	N/A	N/A	N/A
19.5	N/A	N/A	N/A	N/A	N/A	N/A	N/A
19.6	N/A	N/A	N/A	N/A	N/A	N/A	N/A
19.7	N/A	N/A	N/A	N/A	N/A	N/A	N/A
19.8	N/A	N/A	N/A	N/A	N/A	N/A	N/A
19.9	N/A	N/A	N/A	N/A	N/A	N/A	N/A
19.10	N/A	N/A	N/A	N/A	N/A	N/A	N/A
19.11.2	See clause 19.11.2	No hazard was found	N/A	N/A	N/A	N/A	P
19.11.4.8	N/A	N/A	N/A	N/A	N/A	N/A	N/A
19.101	See clause 19.101	No hazard was found	N/A	N/A	N/A	N/A	P
19.102	See clause 19.102	No hazard was found	N/A	N/A	N/A	N/A	P
19.103	N/A	N/A	N/A	N/A	N/A	N/A	N/A

Supplementary information:

19.7	TABLE: Abnormal Operation, locked rotor/moving parts		N/A
	Test voltage (V)	--	—
	Ambient, t₁ (°C)	--	—
	Ambient, t₂ (°C)	--	—

Temperature of winding:	R ₁ (Ω)	R ₂ (Ω)	Δ T (K)	T (°C)	Max. T (°C)
--	--	--	--	--	--

Supplementary information:

IEC 60335-2-29						
Clause	Requirement + Test				Result - Remark	Verdict
19.9	TABLE: Abnormal Operation, running overload					N/A
	Test voltage (V)				--	—
	Ambient, t ₁ (°C).....				--	—
	Ambient, t ₂ (°C).....				--	—
Temperature of winding:		R₁ (Ω)	R₂ (Ω)	Δ T (K)	T (°C)	Max. T (°C)
--		--	--	--	--	--
Supplementary information:						

19.11.2	TABLE: Fault Conditions					P
Fault condition performed:					Observation:	
com- ponent No.	fault	test voltage (V)	test time	fuse No.	fuse current (A)	result
Model: FY1501509000						
BD1 #	SC	240	1s	F1	0.977→ 0	F1 opened immediately, no hazard.
C5A #	SC	240	1s	F1	0.977→ 0	F1 opened immediately, no hazard.
Q1 Pin D- G #	SC	240	1s	F1	0.977→ 0	F1 opened immediately, Q1 damaged, no hazard.
Q1 Pin D-S #	SC	240	1s	F1	0.977→ 0	F1 opened immediately, Q1 damaged, no hazard.
Q1 Pin G- S #	SC	240	1s	F1	0.977→ 0	F1 opened immediately, Q1 damaged, no hazard.
R13 #	SC	240	1s	F1	0.977→ 0	F1 opened immediately, Q1 damaged, no hazard.
U1 pin 2-8 #	SC	240	1s	F1	0.977→ 0	F1 opened immediately, Q1 damaged, no hazard.
U1 pin 4-8 #	SC	240	1s	F1	0.977→ 0	F1 opened immediately, Q1 damaged, no hazard.
T1 Pin1-3	SC	240	10 min	F1	0.977→ 0.015	Unit shut down immediately, no damaged, no hazard.
T1 Pin4-5	SC	240	10 min	F1	0.977→ 0.015	Unit shut down immediately, no damaged, no hazard.
T1 Pin6,7- 8,9	SC	240	10 min	F1	0.977→ 0.015	Unit shut down immediately, no damaged, no hazard.
U5 Pin1	SC	240	10 min	F1	0.977→ 0.015	Unit shut down immediately, no damaged, no hazard.

IEC 60335-2-29							
Clause	Requirement + Test					Result - Remark	Verdict
U5 Pin1 – 2	SC	240	10 min	F1	0.977→ 0.015	Unit shut down immediately, no damaged, no hazard.	
U5 Pin3 – 4	SC	240	10 min	F1	0.977→ 0.015	Unit shut down immediately, no damaged, no hazard.	
D3A	OC	240	10 min	F1	0.977→ 0.015	Unit shut down immediately, no damaged, no hazard.	
Output	OC	240	10 min	F1	0.977→ 0.015	Unit shut down immediately, no damaged, no hazard.	
Supplementary information: 1. "S-C" means short-circuited test; "O-C" means open-circuited test. 2. Thermocouple method was used. 3. All tests were tested with RC load and battery load. 4. #: All faults which caused current fuse opened were repeated by using alternative current fuse separately, obtained the same results. Fuse open current >12A 5. All tests were considered in 100V also, same result. 6. The no-load output voltage was not increase by more than 10% of its no-load output voltage in normal use during and after the fault tests.							

19.13	TABLE: Abnormal Operation, temperature rises			N/A
Thermocouple locations:	Max. temperature rise measured, Δ T (K)		Max. temperature rise limit, Δ T (K)	
--	--		--	
--	--		--	
Supplementary information:				

21.1	TABLE: Impact Resistance			P
Impacts per surface	Surface tested	Impact energy (Nm)	Comments	
Three times	Top	1.0	No hazards	
Three times	Bottom	1.0	No hazards	
Three times	Side	1.0	No hazards	
Supplementary information:				

24.1	TABLE: Critical components information					P
Object / part No.	Manufacturer/ trademark	Type / model	Technical data	Standard	Mark(s) of conformity ¹⁾	
Plastic Enclosure	SABIC INNOVATIVE PLASTICS BV	940(f1)	V-0, 120 degree C. minimum thickness. 2.0mm	UL 94 UL 746	UL E45329	

IEC 60335-2-29					
Clause	Requirement + Test			Result - Remark	Verdict
(Alternative)	SILVER AGE ENGINEERING PLASTICS (DONGGUAN) CO LTD	PC2330	V-0, 115 degree C. minimum thickness. 2.0mm	UL 94 UL 746	UL E225348
(Alternative)	KINGFA SCI & TECH (USA), INC	JH860 (ddd) (f1)	V-0, 120 degree C. minimum thickness. 2.0mm	UL 94 UL 746	UL E484599
Appliance inlet (CN1)	GUANG DONG BOYTALL ELECTRONICS Co., LTD	BT-8	AC 250V, 2.5A, 70°C	UL 498	UL E519256
(Alternative)	Yueqing Lihe Electronics Co.,Ltd.	LH-8	AC 250V, 2.5A, 70°C	UL 498	UL E488195
(Alternative)	LECI Electronics Co., LTD	DB-8	AC 250V, 2.5A, 70°C	UL 498	UL E302229
PCB	DONGGUAN CITY HENGJIE ELECTRONIC CO LTD	C	V-0, 130°C	UL94, UL 796	UL E354097
(Alternative)	DONGGUAN LUJIN ELECTRONICS CO LTD	C	V-0, 130°C	UL 94, UL 796	UL E500542
(Alternative)	SHANTOU YUEDONG LIANFENG ELECTRONIC INDUSTRY CO LTD	LF, LF-D	V-0, 130°C	UL 94, UL 796	UL E320326
(Alternative)	DONGGUAN CITY XINRAN ELECTRONIC CO LTD	XR-V002 XR-F003	V-0, 130°C	UL 94, UL 796	UL E330704
(Alternative)	SHANDONG JINBAO ELECTRONICS CO LTD	ZD	V-0, 130°C,	UL 94, UL 796	UL E141940
(Alternative)	Interchangeable	Interchangeable	V-0, 130°C	UL 94; UL 796	UL

IEC 60335-2-29					
Clause	Requirement + Test			Result - Remark	Verdict
Fuse (F1)	SHENZHEN LANSON ELECTRONICS CO LTD	3K	T6.3AL, 250Vac	EC/EN 60127-1 IEC/EN 60127-3, UL 248-1, UL 248-14	UL E221465 VDE 40010682
Alternative)	DONGGUAN BETTER ELECTRONICS TECHNOLOGY CO LTD	334 - Serie(s) (for VDE approval); 332, 334 (for UL approval)	T6.3AL, 250Vac	IEC/EN 60127-1 IEC/EN 60127-3, UL 248-1, UL 248-14	VDE 40025428 UL E300003
Alternative)	DONGGUAN ANLU ELECTRONICS TECHNOLOGY CO LTD	32GT	T6.3AL, 250Vac	IEC/EN 60127-1 IEC/EN 60127-3, UL 248-1, UL 248-14	VDE 40039890 UL E365174
(Alternative)	XC Electronics (Shen Zhen) Corp. Ltd.	3T	T6.3AL, 250Vac	IEC/EN 60127-1 IEC/EN 60127-3, UL 248-1, UL 248-14	VDE: 40019614 UL E249609
(Alternative)	Dongguan Luoyi Electronic Technology Co., Ltd.	3TB	T6.3AL, 250Vac	IEC/EN 60127-1 IEC/EN 60127-3, UL 248-1, UL 248-14	UL E505058 VDE 40050636
Varistor (MOV1)	HONGZHI ENTERPRISES LTD	HEL10D471K,HE L10D561K, HEL14D471K, HEL14D561K	Minimum 300V ac, minimum 85 degree C, coating minimum V-1	IEC/EN 61051-1 IEC 61051-2 IEC 61051-2-2 UL 1449	VDE 40037512 UL E324904
(Alternative)	SHAANXI HUAXING ELECTRONIC GROUP CO LTD	MYG20G10K561, MYG20G10K471, MYG20G14K471, MYG20G14K561	Minimum 300 Vac, 105 degree C, Coating: min. V-0 or VTM-0	IEC/EN 61051-1 IEC 61051-2 IEC 61051-2-2 UL 1449	VDE 40018747 UL E329651
(Alternative)	GUANGDONG SOUTH HONGMING ELECTRONIC SCIENCE & TECHNOLOGY CO LTD	ZVR10D471, ZVR10D561, ZVR14D471, ZVR14D561	Minimum 300Vac, minimum 85 degree C, coating minimum V-1	IEC/EN 61051-1 IEC 61051-2 IEC 61051-2-2 UL 1449	VDE 40027789 UL E321851
(Alternative)	DONGGUAN CITY DAFU ELECTRONICS CO.,LTD	10D471K, 10D511K, 10D561K, 14D471K, 14D511K, 14D561K	Minimum 300V ac, minimum 85 degree C, coating minimum V-1	IEC/EN 61051-1 IEC 61051-2 IEC 61051-2-2 UL 1449	VDE 40050909 UL E502211

IEC 60335-2-29					
Clause	Requirement + Test			Result - Remark	Verdict
(Alternative)	GUIZHOU KAILI ECONOMIC ZONE ZHONGHAO ELECTRONICS CO.,LTD.	WLR-10D-471K, WLR-10D-511K, WLR-10D-561K, WLR-10D-471K, WLR-10D-511K, WLR-10D-561K	Minimum 300V ac, minimum 85 degree C, coating minimum V-1	IEC/EN 61051-1 IEC 61051-2 IEC 61051-2-2 UL 1449	VDE 40050367 UL E488935
(Alternative)	SHANTOU HIGH NEW TECHNOLOGY DEVELOPMNT ZONE SONGTIAN ENTERPRISE CO LTD	10D471K, 10D511K, 10D561K, 14D471K, 14D511K, 14D561K,	Minimum 300V ac, minimum 85 degree C, coating minimum V-1	UL 1449	UL E330837
Bridge Rectifier (BD1)	Interchangeable	Interchangeable	Min. 4A, min. 600V	IEC/EN 60335-1	Tested with appliance
Electrolytic capacitors (C5A, C5B)	Interchangeable	Interchangeable	Rated 100-150uF, 400V, 105°C	IEC/EN 60335-1	Tested with appliance
Inductor (LF1)	SHENZHEN CINDA ELECTRONICS CO., LTD	T14*8*7	130°C	IEC/EN 60335-1	Test with applicant
-Triple insulated wire	SUMITOMO BAKELITE CO LTD	TEX-E	Rated 130°C	IEC 60950-1 UL 2353	UL E41429
-Magnet winding	Interchangeable	Interchangeable	Min. 130°C	UL 1446	Tested with appliance
Inductor (LF2)	SHENZHEN CINDA XINYE INDUSTRY CO., LTD	SQ1918	130°C	IEC/EN 60335-1	Test with applicant
- Triple insulated wire	FURUKAWA ELECTRIC CO LTD	TEX-E	Rated 130°C	IEC 60950-1 UL 2353	VDE 6735 UL E206440
-Magnet winding	Interchangeable	Interchangeable	Min. 130°C	UL 1446	Tested with appliance
X-Capacitor (CX1)	TENTA ELECTRIC INDUSTRIAL CO LTD	MEX	Rated maximum 0.47uF (±10%), minimum 250Vac, minimum 110 degree C, X2 type	IEC/EN 60384-14, UL 60384-14	UL E222911

IEC 60335-2-29					
Clause	Requirement + Test		Result - Remark	Verdict	
(Alternative)	SHANTOU HIGH- NEW TECHNOLOGY DEVELOPMNT ZONE SONGTIAN ENTERPRISE CO LTD	MPX	Rated maximum 0.47uF (±10%), minimum 250Vac, minimum 110 degree C, X2 type	IEC/EN 60384- 14, UL 60384-14	UL E208107
(Alternative)	SHENZHEN WEIDY INDUSTRIAL DEVELOPMEN T CO LTD	MKP	Rated maximum 0.47uF (±10%), minimum 250Vac, minimum 100 degree C, X2 type	IEC/EN 60384- 14, UL 60384-14	UL E334332
(Alternative)	SHANTOU XINYIN ELECTRONICS TECHNOLOGY CO LTD	MPX	Rated maximum 0.47uF (±10%), minimum 300Vac, minimum 110 degree C, X2 type	IEC/EN 60384- 14, UL 60384-14	UL E470852
(Alternative)	DONGGUAN CITY DAFU ELECTRONICS CO LTD	MPX	Rated maximum 0.47uF (±10%), minimum 250Vac, minimum 110 degree C, X2 type	IEC/EN 60384- 14, UL 60384-14	UL E465278
(Alternative)	XIANGTAI ELECTRONIC (SHENZHEN) CO LTD	MPX/MKP	Rated maximum 0.47uF (±10%), minimum 250Vac, minimum 110 degree C, X2 type	IEC/EN 60384- 14, UL 60384-14	UL E357475

IEC 60335-2-29					
Clause	Requirement + Test		Result - Remark		Verdict
Y-Capacitor (CY7, CY8)	JYA-NAY CO LTD	JN	Each rated maximum 3300pF, minimum 250Vac, 125 degree C, Y1 type	IEC/EN 60384- 14, UL 60384-14	UL E201384
(Alternative)	JYA-NAY CO LTD	JY	Each rated maximum 3300pF, minimum 250Vac, 125 degree C, Y2 type	IEC/EN 60384- 14, UL 60384-14	UL E201384
(Alternative)	DONGGUAN CITY DAFU ELECTRONICS CO LTD	CT7 Y1	Each rated maximum 3300pF, minimum 250Vac, 125 degree C, Y1 type	IEC/EN 60384- 14, UL 60384-14	UL E465278 VDE 40041523
(Alternative)	DONGGUAN CITY DAFU ELECTRONICS CO LTD	CT7 Y2	Each rated maximum 3300pF, minimum 250Vac, 125 degree C, Y2 type	IEC/EN 60384- 14, UL 60384-14	UL E465278 VDE 40041523
(Alternative)	SHANTOU HIGH-NEW TECHNOLOGY DEVELOPMNT ZONE SONGTIAN ENTERPRISE CO LTD	CD for UL CD-Series for VDE	Each rated maximum 3300pF, minimum 250Vac, 125 degree C, Y1 type	IEC/EN 60384- 14, UL 60384-14	UL E208107 VDE 40025754
(Alternative)	SHANTOU HIGH-NEW TECHNOLOGY DEVELOPMNT ZONE SONGTIAN ENTERPRISE CO LTD	CE Series for VDE CE for UL	Each rated maximum 3300pF, minimum 250Vac, 125 degree C, Y2 type	IEC/EN 60384- 14, UL 60384-14	UL E208107 VDE 40025748

IEC 60335-2-29					
Clause	Requirement + Test		Result - Remark		Verdict
(Alternative)	ANSHAN KEIFAT ELECTRONIC CERAMIC TECHNICAL CO LTD	CT7	Each rated maximum 3300pF, minimum 250Vac, 125 degree C, Y1 type	IEC/EN 60384-14, UL 60384-14	UL E232980 VDE 40036847
(Alternative)	ANSHAN KEIFAT ELECTRONIC CERAMIC TECHNICAL CO LTD	CT7	Each rated maximum 3300pF, minimum 250Vac, 125 degree C, Y2 type	IEC/EN 60384-14, UL 60384-14	UL E232980 VDE 40036847
Photo Coupler (U4)	EVERLIGHT ELECTRONICS CO LTD	EL817	Double protection, Insulation voltage minimum 5000Vac, rated 110 degree C.	IEC/EN 60747-5-5	VDE 132249 UL E214129
(Alternative)	BRIGHT LED ELECTRONICS CORP	BPC-817	Double protection, Insulation voltage minimum 5000Vac, rated 110 degree C.	IEC/EN 60747-5-5	VDE 40007240 UL E236324
(Alternative)	CRM ICBG (Wuxi) Co Ltd	PC817	Double protection, Insulation voltage minimum 5000Vac, rated 110 degree C.	EN 60747-5-5	VDE 40050440 UL E465130
(Alternative)	Shenzhen Orient Components Co. Ltd.	ORPC-817 x	Double protection, Insulation voltage minimum 5000Vac, rated 110 degree C.	EN 60747-5-5	VDE 40029733 UL E323844
Transformer (T1)	SHENZHEN FORD ELECTRONIC CO LTD	FYD-POT4020RZ	Class B	IEC/EN 60335-1	Test with applicant

IEC 60335-2-29					
Clause	Requirement + Test			Result - Remark	Verdict
Insulation system	SHENZHEN FORD ELECTRONIC CO LTD	FORD-01	Class B	-	UL E359738
- Bobbin Material	CHANG CHUN PLASTICS CO LTD	T200HF	Phenolic, V-0, 150 degree C, minimum thickness 0.5 mm	UL 94 UL 746C	UL E59481
-Triple insulated wire	TOTOKU ELECTRIC CO LTD	TIW-3 xxyy	130 degree C.	IEC/EN 61558-1 IEC/EN 61558-2-16	VDE 40044889
- Tube	GREAT HOLDING INDUSTRIAL CO LTD	TFT	200 degree C. minimum 300Vac	UL 244	UL E156256
- Insulation tape	3M COMPANY ELECTRICAL MARKETS DIV(EMD)	1350F-1(b)	130 degree C.	UL 510A	UL E17385
(Alternative)	JINGJIANG YAHUA PRESSURE SENSITIVE GLUE CO LTD	PZ* (b)	130 degree C.	UL 510A	UL E165111
- Varnish	ELANTAS PDG, Inc.	468-2 (d), 468-2FC (d), 468-2-7-xxF (d), 468-2-7FC-xxF (d)	Minimum 130 degree C.	UL 1446	UL E75225
Glue	Interchangeable	Interchangeable	Minimum V-2	UL 94	UL
Insulation tape (wrapped on heatsink)	3M COMPANY ELECTRICAL MARKETS DIV(EMD)	1350F-1 (b)	130°C 2 layers	OANZ2	UL E17385
Strain Relief	Interchangeable	Interchangeable	Minimum V-2	UL 94	UL
Output wire	SHENZHEN CITY WEITAIXING ELECTRONIC CO LTD	2464/2468/2725/1185	VW-1, 80°C, 20 AWG Min.300V	UL 758	UL E481928
(Alternative)	SHENZHEN HUANYA ELECTRONICS CO LTD	2464; 2468; 2725	VW-1, 80°C, 20 AWG Min.300V	UL 758	UL E494205

IEC 60335-2-29					
Clause	Requirement + Test			Result - Remark	Verdict
(Alternative)	SHENZHEN YUEDENG ELECTRONICS CO LTD	2464; 1185; 2468; 2725	VW-1, 80°C, 20 AWG Min.300V	UL 758	UL E471418
(Alternative)	Interchangeable	Interchangeable	VW-1, 80°C, 20 AWG Min.300V	UL 758	UL
Heatskinabel for F1	Interchangeable	Interchangeable	Min. VW-1, 125°C, 600V.	UL 224	UL
Insulation sheet	SICHUAN DONGFANG INSULATING MATERIAL CO LTD	WT	V-0	UL 94	E199019
Tubing use for R25	Interchangeable	Interchangeable	Min. VW-1, 125 degree C, 600V.	UL 224	UL
Supplementary information: 1) Provided evidence ensures the agreed level of compliance. See OD-CB2039. License available upon request.					

IEC 60335-2-29

Clause	Requirement + Test	Result - Remark	Verdict
--------	--------------------	-----------------	---------

28.1	TABLE: Threaded Part Torque Test	N/A	
Threaded part identification	Diameter of thread (mm)	Column number (I, II, or III)	Applied torque (Nm)
--	--	--	--
--	--	--	--

Supplementary information:

29.1/29.2	TABLE: Clearance And Creepage Distance Measurements	P				
clearance cl and creepage distance dcr at/of:	Up (V)	U r.m.s. (V)	Required cl (mm)	cl (mm)	required dcr (mm)	dcr (mm)
Line and Neutral before F1 (BI)	420	240	2.0	6.6	2.5	6.6
Two terminals of F1 (BI)	420	240	2.0	3.2	2.5	3.2
Primary trace to secondary trace under CY7 (BI)	420	240	2.0	4.5	2.5	4.5
Primary trace to secondary trace under CY8 (SI)	420	240	2.0	5.0	2.5	5.0
Primary components to accessible enclosure (RI)	420	240	3.5	7.4	5.0	7.4
HS1 to Secondary Component Output wire (RI)	420	240	3.5	8.2	5.0	8.2
Primary trace to secondary trace under U5 (RI)	568	267	3.5	6.3	5.0	6.3
Primary trace to secondary trace under T1 (RI)	568	267	3.5	6.5	5.4	6.5
T1 primary winding to secondary pin (RI)	568	267	3.5	9.1	5.4	9.1
T1 core to secondary pin (RI)	568	267	3.5	7.8	5.4	7.8
T1 core to Primary component C7 (RI)	568	267	3.5	8.0	5.4	8.0

Supplementary information:

- T1 core considered as primary parts.
- FI: Functional insulation; BI: Basic insulation; SI: Supplementary insulation; RI: Reinforced insulation.

29.3	TABLE: Distance Through Insulation Measurements	P		
Distance through insulation di at/of:	U r.m.s. (V)	Test voltage (V)	Required di (mm)	di (mm)
Enclosure	240	3000	2.0	Min. 2.0

Supplementary information:

IEC 60335-2-29			
Clause	Requirement + Test	Result - Remark	Verdict
30.1	TABLE: Ball Pressure Test of Thermoplastics		N/A
Allowed impression diameter (mm)		2.0	—
Object/ Part No./ Material	Manufacturer/ trademark	Test temperature (°C)	Impression diameter (mm)
Appliance inlet / DB-8	Zhejiang LECI Electronics Co., Ltd	125	1.0
Appliance inlet / LH-8	Yueqing Lihe Electronics Co.,Ltd.	125	1.2
PCB / C	DONGGUAN CITY HENGJIE ELECTRONIC CO LTD	125	0.9
PCB / C	DONGGUAN LUJIN ELECTRONICS CO LTD	125	0.8
PCB / LF	SHANTOU YUEDONG LIANFENG ELECTRONIC INDUSTRY CO LTD	125	0.7
PCB / LF-D	SHANTOU YUEDONG LIANFENG ELECTRONIC INDUSTRY CO LTD	125	0.9
PCB / XR-V002	DONGGUAN CITY XINRAN ELECTRONIC CO LTD	125	0.9
PCB / ZD	SHANDONG JINBAO ELECTRONICS CO LTD	125	0.8
Bobbin T1 / T200HF	CHANG CHUN PLASTICS CO LTD	125	1.0
Enclosure / 940(f1)	SABIC INNOVATIVE PLASTICS BV	75	0.9
Enclosure / 940(f1)	SABIC JAPAN L L C	75	0.9
Enclosure / PC2330	SILVER AGE ENGINEERING PLASTICS (DONGGUAN) CO LTD	75	1.0
Enclosure / JH860 (ddd) (f1)	KINGFA SCI & TECH (USA), INC	75	1.1
Supplementary information:			

IEC 60335-2-29

Clause	Requirement + Test	Result - Remark	Verdict
--------	--------------------	-----------------	---------

30.2	TABLE: Resistance to heat and fire - Glow wire tests							P
Object/ Part No./ Material	Manufacturer / trademark	Glow wire test (GWT); (°C)						Verdict
		550	650		750		850	
			t _e (s)	t _i (s)	t _e (s)	t _i (s)		
Appliance inlet / DB-8	Zhejiang LECI Electronics Co., Ltd	--	--	--	0s	0s	No flame, no drop	P
Appliance inlet / LH-8	Yueqing Lihe Electronics Co.,Ltd.	--	--	--	0s	0s	No flame, no drop	P
PCB / C	DONGGUAN CITY HENGJIE ELECTRONIC CO LTD	--	--	--	0s	0s	No flame, no drop	P
PCB / C	DONGGUAN LUJIN ELECTRONICS CO LTD	--	--	--	0s	0s	No flame, no drop	P
PCB / LF	SHANTOU YUEDONG LIANFENG ELECTRONIC INDUSTRY CO LTD	--	--	--	0s	0s	No flame, no drop	P
PCB / LF-D	SHANTOU YUEDONG LIANFENG ELECTRONIC INDUSTRY CO LTD	--	--	--	0s	0s	No flame, no drop	P
PCB / XR-V002	DONGGUAN CITY XINRAN ELECTRONIC CO LTD	--	--	--	0s	0s	No flame, no drop	P
PCB / ZD	SHANDONG JINBAO ELECTRONICS CO LTD	--	--	--	0s	0s	No flame, no drop	P
Bobbin T1		--	--	--	0s	0s	No flame, no drop	P

DongGuan Anci Electronic Technology Co., Ltd.

1-2 Floor, Building A, No.11, Headquarters 2 Road, Songshan Lake Hi-tech Industrial Development Zone,

Dongguan City, Guangdong Pr., China

Phone: 86-769-8507 5888; Fax: 86-769-8507 5898 E-mail: anci@anci.com

IEC 60335-2-29								
Clause	Requirement + Test					Result - Remark		Verdict
Bobbin T1 / T200HF	CHANG CHUN PLASTICS CO LTD	--	--	--	0s	0s	No flame, no drop	P
Enclosure / 940(f1)	SABIC INNOVATIVE PLASTICS BV	No flame, no drop	--	--	--	--	--	P
Enclosure / 940(f1)	SABIC JAPAN L L C	No flame, no drop	--	--	--	--	--	P
Enclosure / PC2330	SILVER AGE ENGINEERING PLASTICS (DONGGUAN) CO LTD	No flame, no drop	--	--	--	--	--	P
Enclosure / JH860 (ddd) (f1)	KINGFA SCI & TECH (USA), INC	No flame, no drop	--	--	--	--	--	P
Object/ Part No./ Material	Manufacturer / trademark	Glow-wire flammability index (GWFI), °C				GW ignition temp. (GWIT), °C		Verdict
		550	650	750	850	675	775	
--	--	--	--	--	--	--	--	--
The test specimen passed the glow wire test (GWT) with no ignition $[(t_e - t_i) \leq 2s]$ (Yes/No) :								Yes
If no, then surrounding parts passed the needle-flame test of annex E (Yes/No)								--
The test specimen passed the test by virtue of most of the flaming material being withdrawn with the glow-wire (Yes/No)?.....								Yes
Ignition of the specified layer placed underneath the test specimen (Yes/No)								No
Supplementary information: 550 °C GWT not relevant (or applicable) to parts of material classified at least HB40 or if relevant HBF The GWIT pre-selection option, the 850 °C GWFI pre-selection option, and the 850 °C GWT are not relevant (or applicable) for attended appliances.								

30.2/30.2.4	TABLE: Needle- flame test (NFT)				P
Object/ Part No./ Material	Manufacturer/ trademark	Duration of application of test flame (t_a); (s)	Ignition of specified layer Yes/No	Duration of burning (t_b); (s)	Verdict
PCB / C	DONGGUAN CITY HENGJIE ELECTRONIC CO LTD	30	No	0	Pass
PCB / C	DONGGUAN LUJIN ELECTRONICS CO LTD	30	No	0	Pass



IEC 60335-2-29					
Clause	Requirement + Test	Result - Remark			Verdict
PCB / LF	SHANTOU YUEDONG LIANFENG ELECTRONIC INDUSTRY CO LTD	30	No	0	Pass
PCB / LF-D	SHANTOU YUEDONG LIANFENG ELECTRONIC INDUSTRY CO LTD	30	No	0	Pass
PCB / XR-V002	DONGGUAN CITY XINRAN ELECTRONIC CO LTD	30	No	0	Pass
PCB / ZD	SHANDONG JINBAO ELECTRONICS CO LTD	30	No	0	Pass
Supplementary information: NFT not relevant (or applicable) for Parts of material classified as V-0 or V-1 NFT not relevant (or applicable) for Base material of PCBs classified as V-0 or if relevant VTM-0					

---END---



Figure 1. Overall view

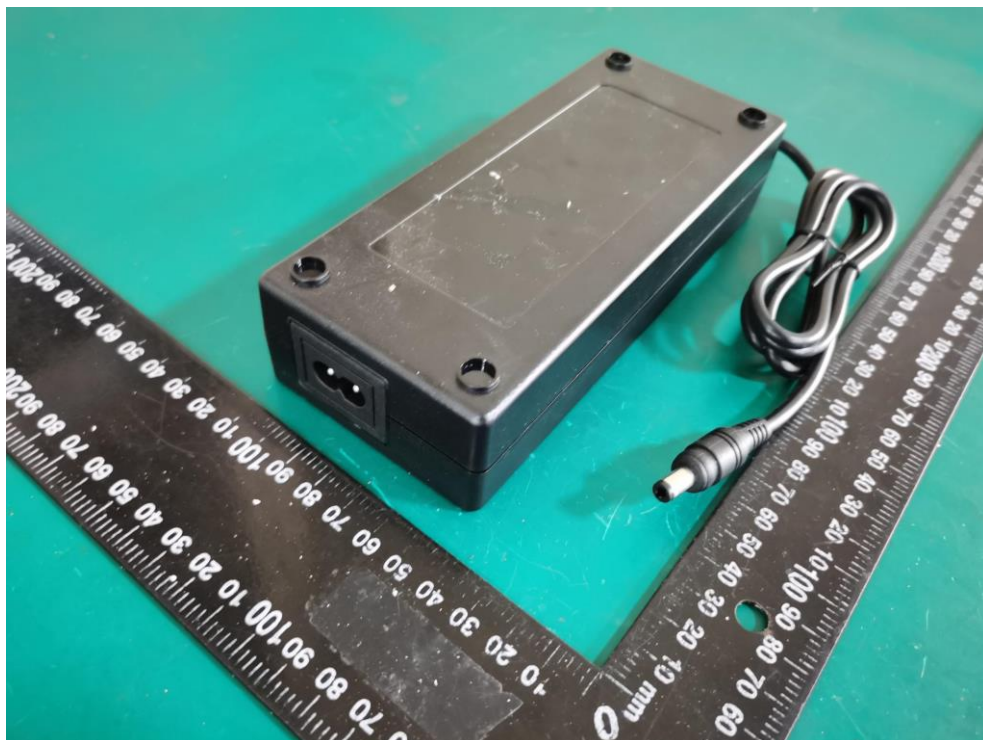


Figure 2. Inside view



Figure 3. Inside view



Figure 4. Inside view

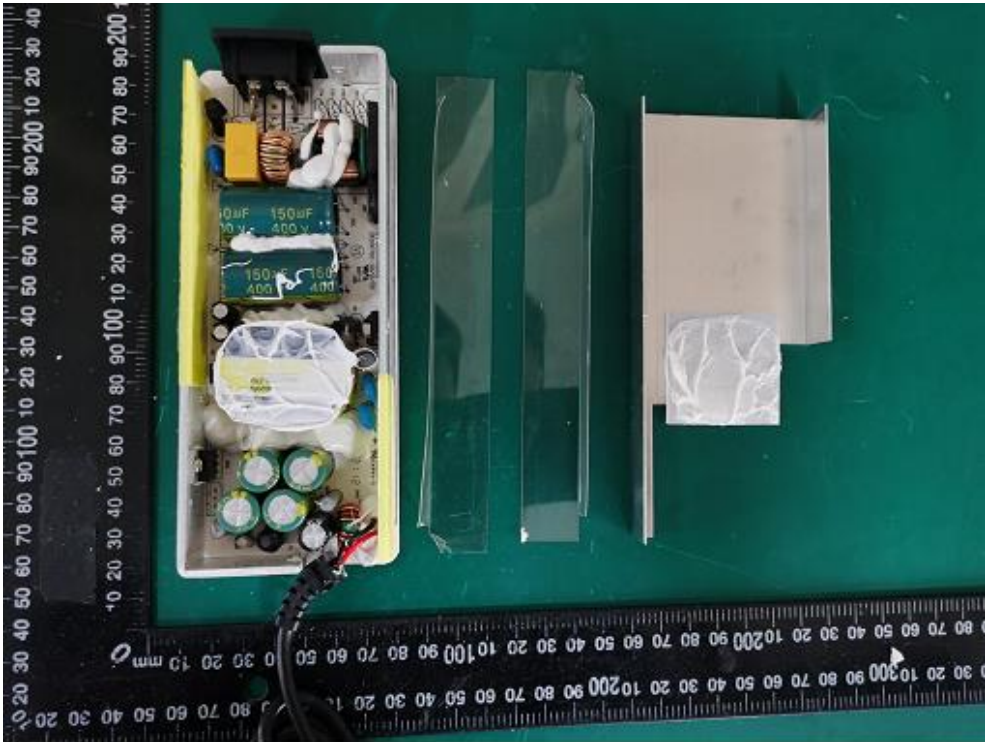


Figure 5. Inside view

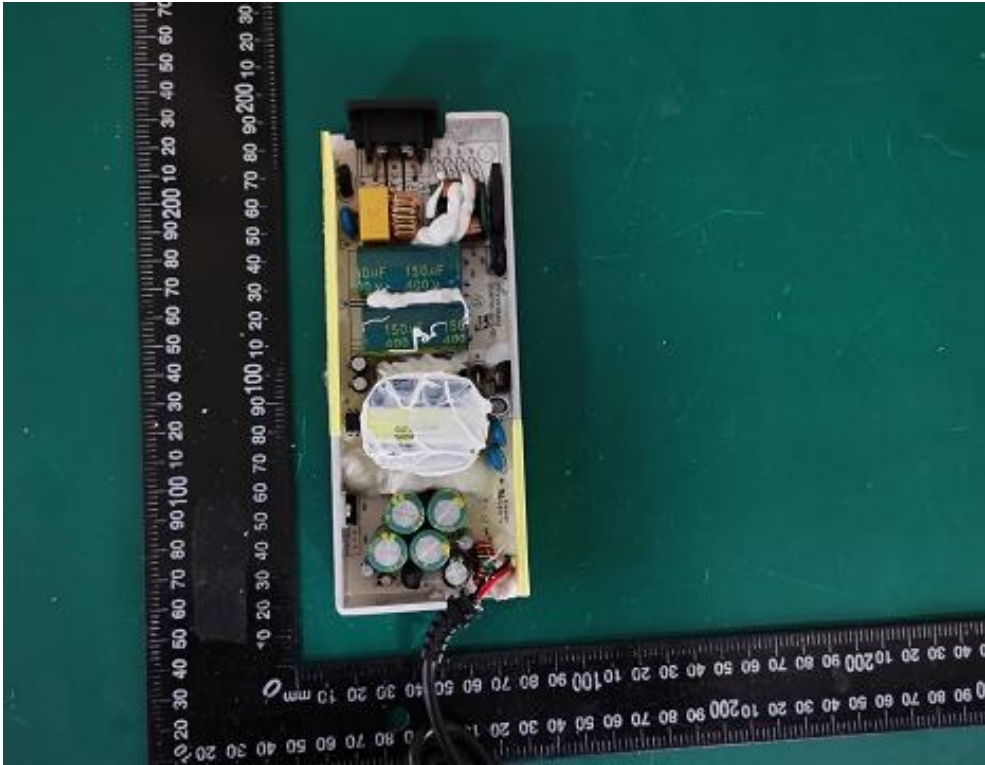


Figure 6. Top view of PCB

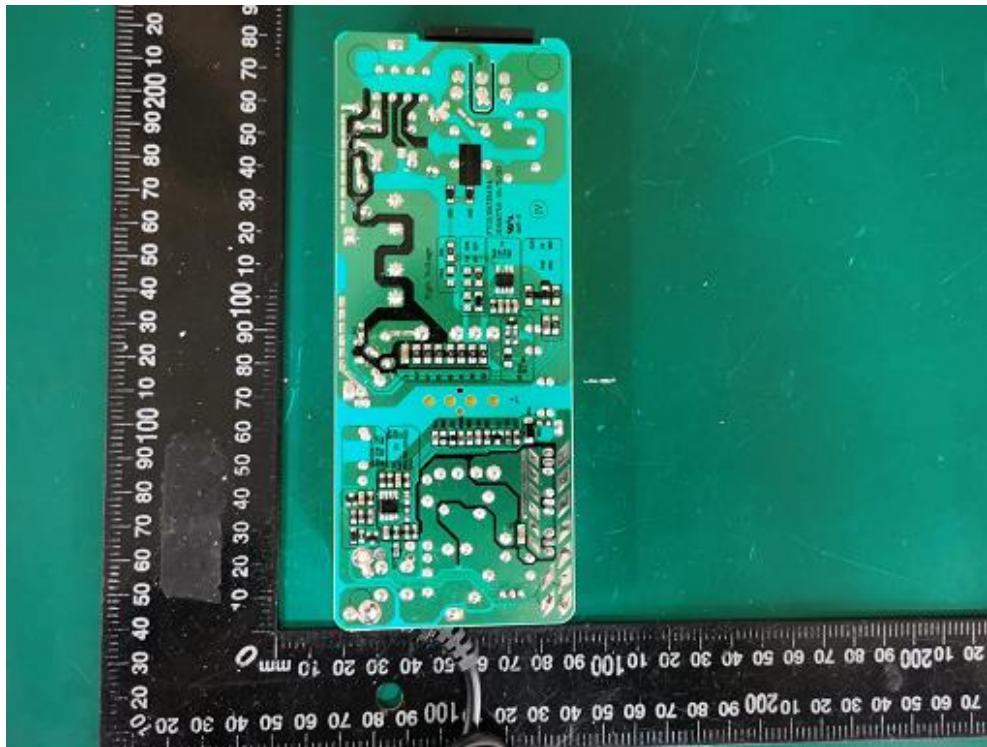


Figure 7. Bottom view of PCB



Figure 8. Output terminal for unit (Output $\leq 42V$)



Figure 9. Output terminal for unit (Output>42V)